



14 Harvey Court Sandy Mead, Epsom
Epsom

Guide Price **£475,000**



14 Harvey Court Sandy Mead

Epsom, Epsom

Elegant 2-bed ground floor apartment in a prestigious gated Victorian conversion. Modern comforts blend with classic charm, tri-aspect sitting dining room, modern kitchen, 2 double bedrooms. 2 parking spaces, small patio, and easy access to amenities. Contact Cairds for a viewing.

Council Tax band: D

Tenure: Leasehold

EPC Energy Efficiency Rating: D

EPC Environmental Impact Rating: D

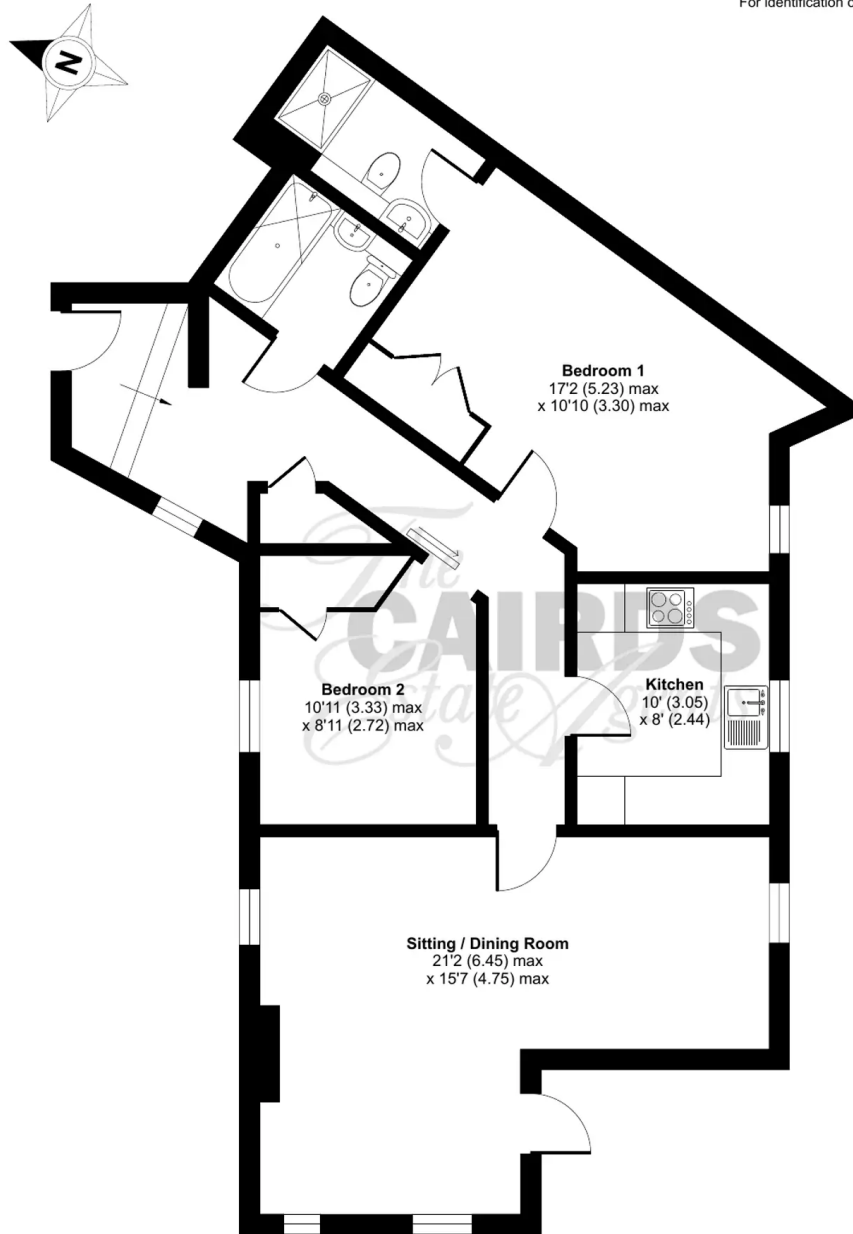
- Stunning Ground Floor Apartment
- Two Large Double Bedrooms
- Gated Victorian Conversion Development
- Tri-Aspect Light & Airy Living Room
- Period Features:- High Ceilings & Sash Windows
- Two Allocated Parking Spaces
- Secluded Parkland Setting
- Near David Lloyd Leisure Centre



Harvey Court, Sandy Mead, Epsom, KT19

Approximate Area = 890 sq ft / 82.6 sq

For identification only - Not to scale



GROUND FLOOR



Floor plan produced in accordance with RICS Property Measurement Standards incorporating International Property Measurement Standards (IPMS2 Residential). ©nlcheom 2024. Produced for Cairds. REF: 1120357





Cairds The Estate Agents

Cairds The Estate Agents, 128-130 High Street - KT19 8BT

01372 743033 • homes@cairds.co.uk • www.cairds.co.uk