



Waterloo Road, Blackpool

Offers Over **£160,000**

Waterloo Road

Blackpool

Step into this spacious semi-detached house and prepare to be impressed! The entrance vestibule leads into a hallway, opening up to a cosy lounge and dining area. The fitted kitchen is perfect for whipping up your favourite meals. Upstairs, you'll find 3 bedrooms and a 4-piece bathroom. With gas central heating and uPVC double glazing, this home is as comfortable as it is charming. Outside, off-road parking ensures you never struggle to find a spot, while the enclosed south-facing rear garden is a tranquil retreat perfect for relaxing or entertaining guests.

Council Tax band: B

Tenure: Freehold

- Spacious Semi Detached House
- Entrance Vestibule, Hallway, Lounge, Dining Area, Fitted Kitchen
- 3 Bedrooms, 4 piece Bathroom
- Gas Central Heating, uPVC Double Glazing
- Off Road Parking, Enclosed South Facing Rear Garden





Entrance Vestibule

Hallway

13' 0" x 6' 2" (3.96m x 1.87m)

Lounge

25' 7" x 13' 2" (7.80m x 4.01m)

Dining Area

Kitchen

11' 0" x 7' 7" (3.35m x 2.32m)

First Floor Landing

Bedroom 1

12' 11" x 11' 7" (3.94m x 3.54m)

Bedroom 2

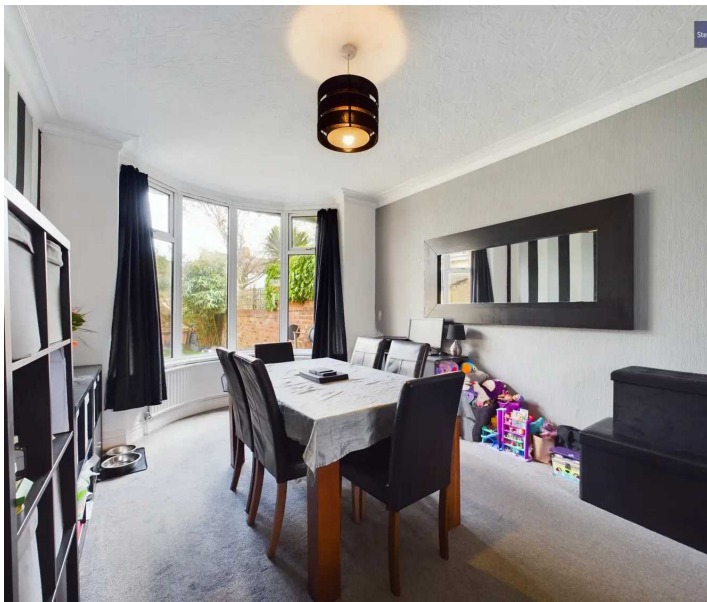
12' 6" x 11' 6" (3.81m x 3.51m)

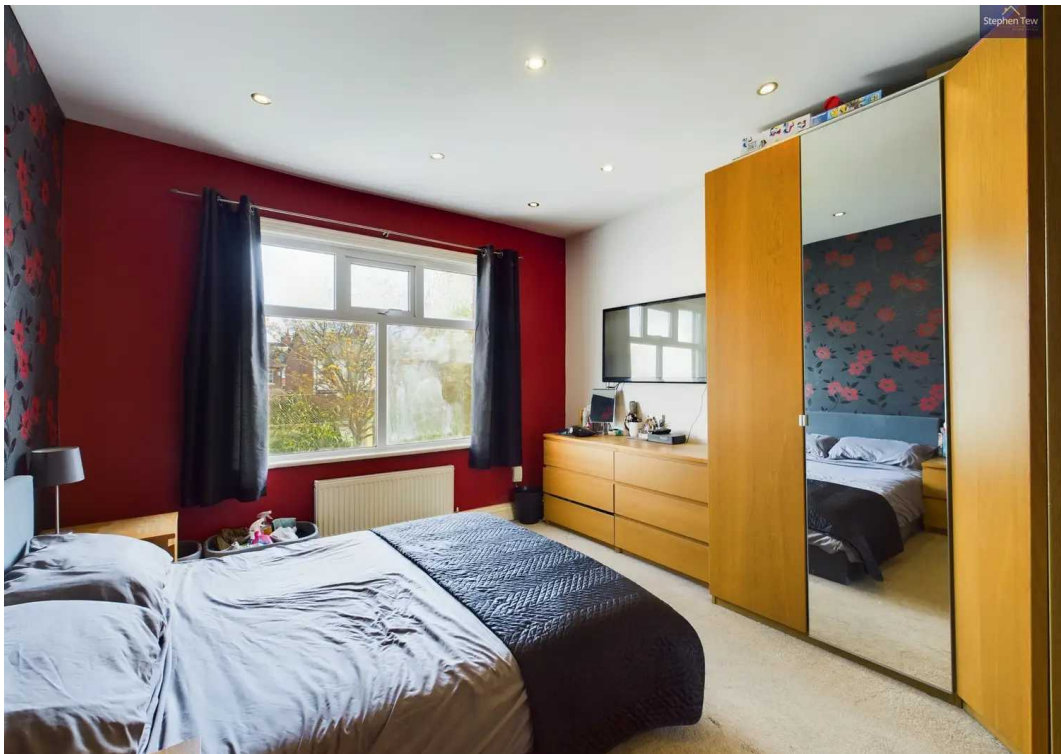
Bedroom 3

7' 8" x 7' 10" (2.34m x 2.39m)

Bathroom

8' 11" x 7' 10" (2.71m x 2.40m)







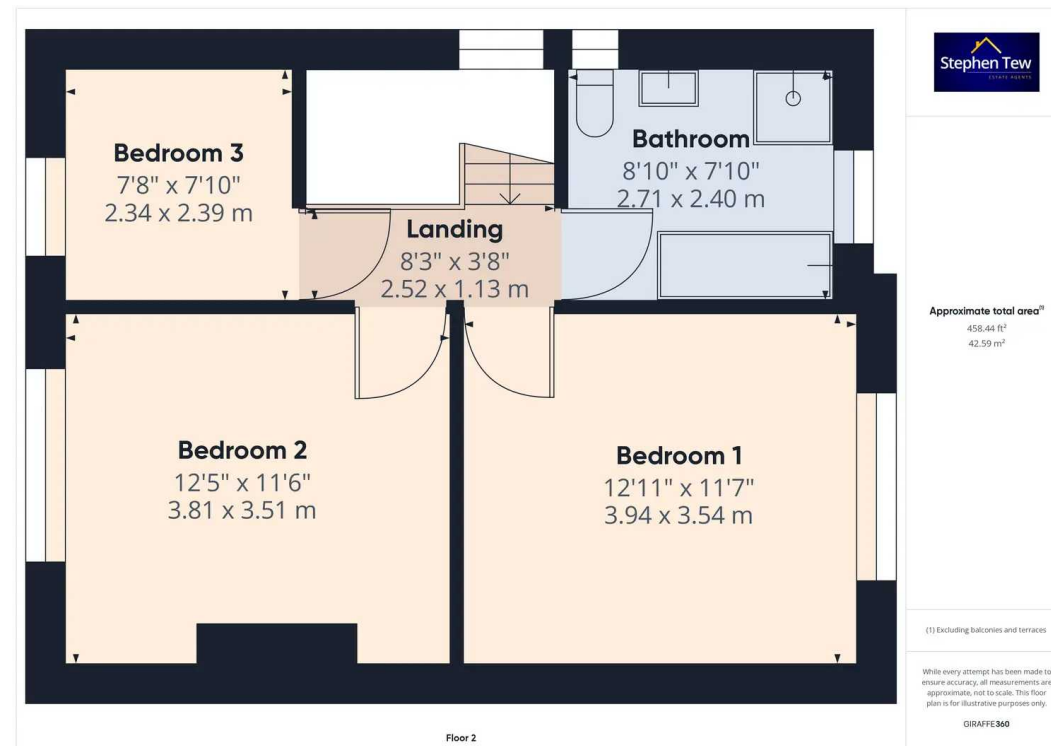
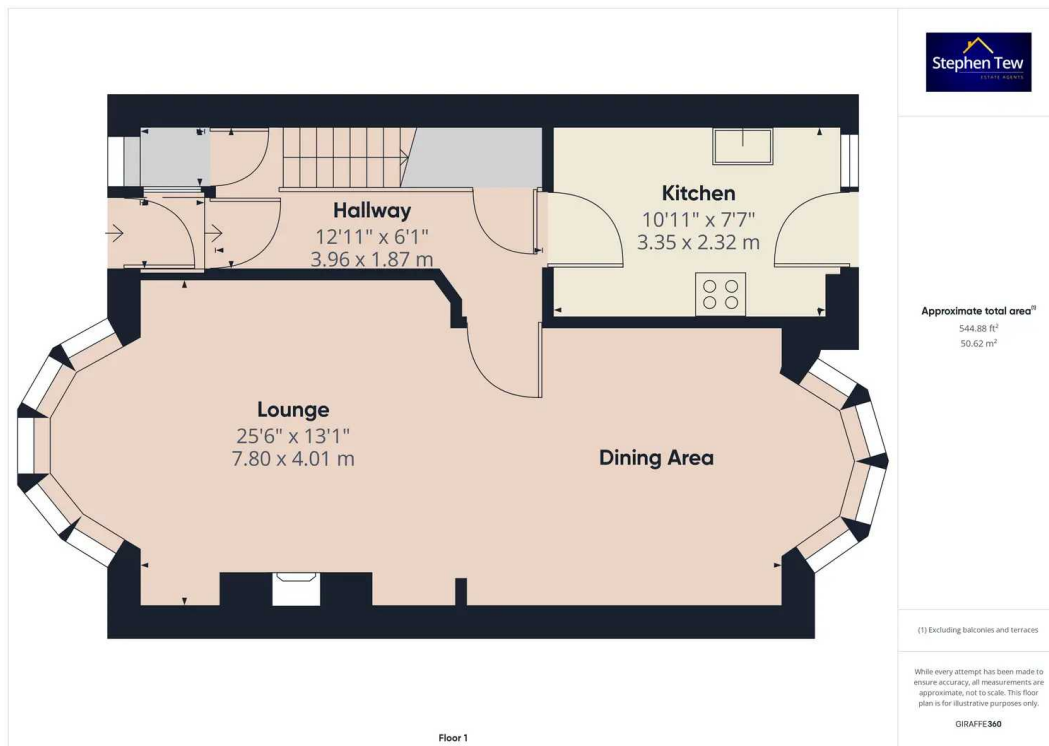
FRONT GARDEN

REAR GARDEN

OFF STREET

1 Parking Space







Stephen Tew Estate Agents

Stephen Tew Estate Agents, 132 Highfield Road - FY4 2HH

01253 401111

info@stephentew.co.uk

www.stephentew.co.uk

