



GROUND FLOOR TWO BEDROOM MAISONETTE

Tolcarne Drive, Pinner, HA5 2DH



GROUND FLOOR TWO BEDROOM MAISONETTE

Tolcarne Drive, Pinner, HA5 2DH

**GROUND FLOOR • TWO BEDROOMS •
LOUNGE/DINING ROOM • FITTED KITCHEN •
FAMILY BATHROOM • PRIVATE REAR GARDEN •
CLOSE TO AMENITIES •**

Description

A well presented ground floor two bedroom maisonette offers spacious living accommodation, with the added benefit of a private rear garden. The property consists of entrance hall leading to a spacious lounge/dining room, fitted kitchen with a range of units, two double bedrooms and a family bathroom.

Tolcarne Drive is situated on a popular road located just moments from both Pinner and Northwood Hills amenities, which offer a variety of shops, restaurants, coffee houses and popular supermarkets.





Location

Transport facilities include local bus links and the Metropolitan Line at both Pinner and Northwood Hills tube stations, which provide a fast and frequent service into the heart of Central London and beyond.

The area is well served for primary and secondary schooling which includes nearby Harlyn primary school and Northwood and Haydon secondary schools there is also a good selection of children's parks/playgrounds and recreational facilities.

Additional Information

Tenure: tbc

Lease Length: tbc

Service Charge: tbc

Ground Rent: tbc

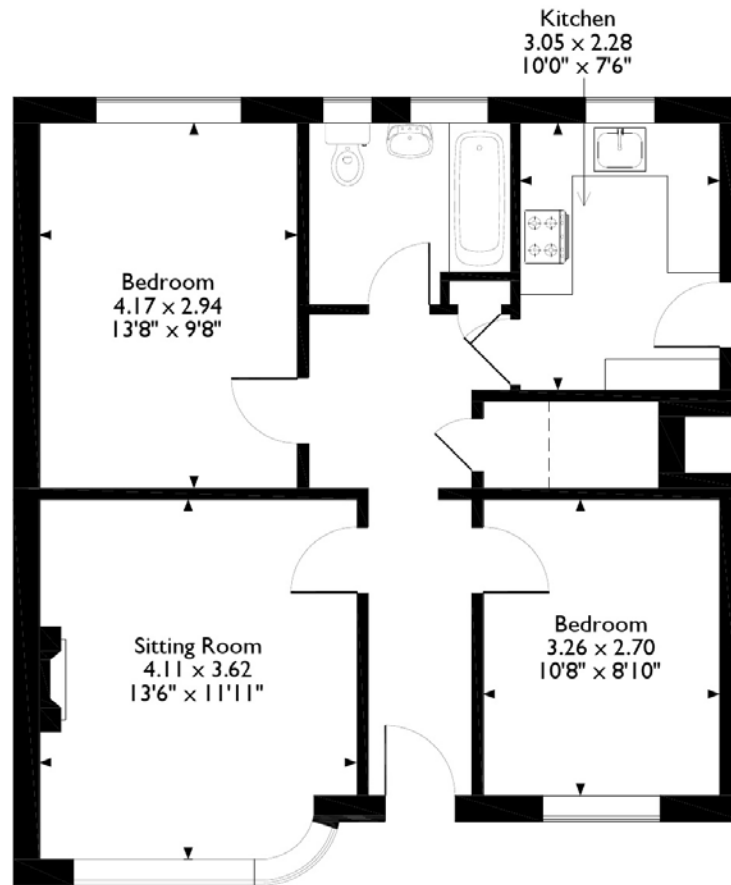
Local Authority: London Borough of Hillingdon

Council Tax: Band D

Energy Efficiency Rating: Band D



Tolcarne Drive, Pinner
Approximate Gross Internal Area
59 Sq M/639 Sq Ft



Ground Floor Flat

Please note that the location of doors, windows and other items are approximate and this floorplan is to be used for illustrative purposes only. Unauthorized reproduction is prohibited.

ROBSONS

Address 1 High Street, Pinner, HA5 5PJ
Tel: 02088668083 pinner@robsonswb.com

www.robsonswb.com