

New Barton Street

Salford



Offers Over £190,000

New Barton Street

Salford

WOW! This TWO BEDROOM, BAY-FRONTED terraced property has a lot to offer! Renovated over the past six years, with a new kitchen, new bathroom and redecoration internally, this property would be an ideal first time home or investment!

Council Tax band: A

Tenure: Freehold

- Stylish Two Bedroom, Bay-Fronted Terraced Property
- Located in the Popular Irlam o'th' Height, Close to Local Schooling, Amenities and Several Well-Kept Parks
- Bay-Fronted Lounge and a Spacious Dining Room, Separated via an Archway
- Modern Fitted Kitchen and a Large Three-Piece Bathroom
- Two Double Bedrooms
- Low-Maintenance Courtyard Garden to the Rear
- Within Easy Access of Transport Links into Salford Quays, Media City and Manchester City Centre
- Ideal First Time Home or Investment
- Early Viewing is Essential!



HILLS

Entrance Hallway

Complete with a ceiling light point, double glazed window and laminate flooring.

Lounge

10' 8" x 10' 8" (3.26m x 3.24m)

Complete with a ceiling light point, double glazed bay window and wall mounted radiator. Fitted with laminate flooring.

Kitchen

8' 11" x 8' 11" (2.72m x 2.72m)

Featuring modern fitted units with integral hob, oven and fridge freezer. Complete with a ceiling light point, double glazed window and cushioned flooring.

Dining Room

12' 0" x 11' 3" (3.67m x 3.42m)

Complete with a ceiling light point, double glazed patio doors and wall mounted radiator. Fitted with laminate flooring.

Landing

Complete with a ceiling light point and laminate flooring.

Bedroom One

14' 2" x 12' 8" (4.31m x 3.87m)

Complete with a ceiling light point, double glazed bay window, double glazed window and wall mounted radiator. Fitted with carpet flooring.

Bathroom Two

12' 1" x 9' 1" (3.69m x 2.78m)

Complete with a ceiling light point, double glazed window and wall mounted radiator. Fitted with laminate flooring.

Bathroom

8' 11" x 8' 11" (2.72m x 2.72m)

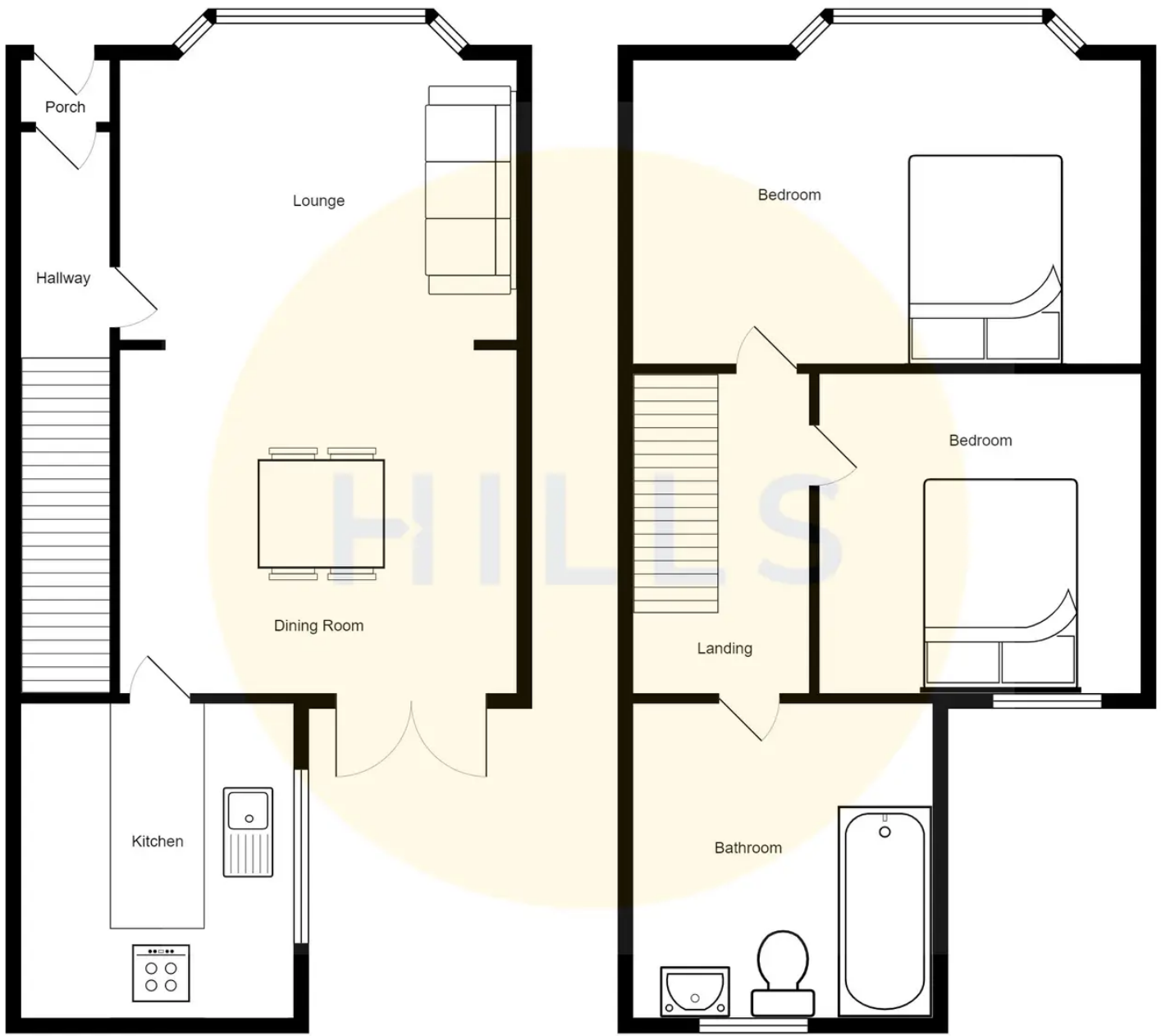
Featuring a contemporary three-piece suite including bath with shower over, hand wash basin and W.C. Complete with a ceiling light point, double glazed window and wall mounted radiator. Fitted with part tiled walls and tiled flooring.





HILLS







Hills | Salfords Estate Agent

Hills Residential, Sentinel House Albert Street - M30 0SS

0161 707 4900

sales@hills.agency

www.hills.agency/



THE PROPERTY MISDESCRIPTIONS ACT 1991 The Agent has not tested any apparatus, equipment, fixtures and fittings or services and so cannot verify that they are in working order or fit for the purpose. A Buyer is advised to obtain verification from their Solicitor or Surveyor. References to the Tenure of a Property are based on information supplied by the Seller. The Agent has not had sight of the title documents. A Buyer is advised to obtain verification from their Solicitor. You are advised to check the availability of this property before travelling any distance to view. Every effort and precaution has been made to ensure these particulars are correct and not misleading but their accuracy is not guaranteed nor do they form part of any contract. If there is any point which is of particular importance to you, please contact us and we will provide any information you require. This is advisable, particularly if you intend to travel some distance to view the property. The mention of any appliances and services within these details does not imply that they are in full and efficient working order. These particulars are in draft form awaiting Vendors confirmation of their accuracy. These details must therefore be taken as a guide only.