

ON HOLD



Otley Road

2 Bedrooms, 1 Bathroom, Apartment

£237,500



Otley Road

2 Bedrooms, 1 Bathroom

£237,500

- HEADINGLEY LOCATION
- FIRST FLOOR APARTMENT
- FREEHOLD
- GAS CENTRAL HEATING
- GARDEN AND GARAGE

ENTRANCE HALL Ground floor entrance with Upvc porch, stair access to first floor apartment.

KITCHEN/BREAKFAST ROOM Kitchen with a modern range of wall and base units and contrasting worktops with black brick effect tiled splashback. Four ring gas hob, electric oven and extractor hood. Plumbing for washer and dryer. Wall extractor fan. "Potterton Boiler" in situ. Good sized kitchen with two Upvc double glazed windows offering lot of natural light. Central heating radiator.

LIVING ROOM Superb spacious living room and dining area. Three Upvc double glazed windows to front and side elevations. Two central heating radiators.

LANDING HALLWAY First floor landing hallway with feature half glass door.

PRINCIPLE BEDROOM Large principle double bedroom with ample space for wardrobes. Upvc double glazed window to front elevation. Central heating radiator.

BATHROOM Bathroom with three piece suite in White. Briefly comprising: Low level WC, hand wash basin, bath with shower over. Glass shower screen. Tiled walls and floor. Extractor fan. Chrome central heating radiator. Upvc double glazed window to rear elevation.

DOUBLE BEDROOM Second double bedroom with rear elevation Upvc double glazed window. Central heating radiator.

GARDEN AREA Extensive mainly laid to lawn garden to rear of property, great outdoor living space with direct access from entrance to property.

DRIVEWAY WITH GARAGE Private shared driveway





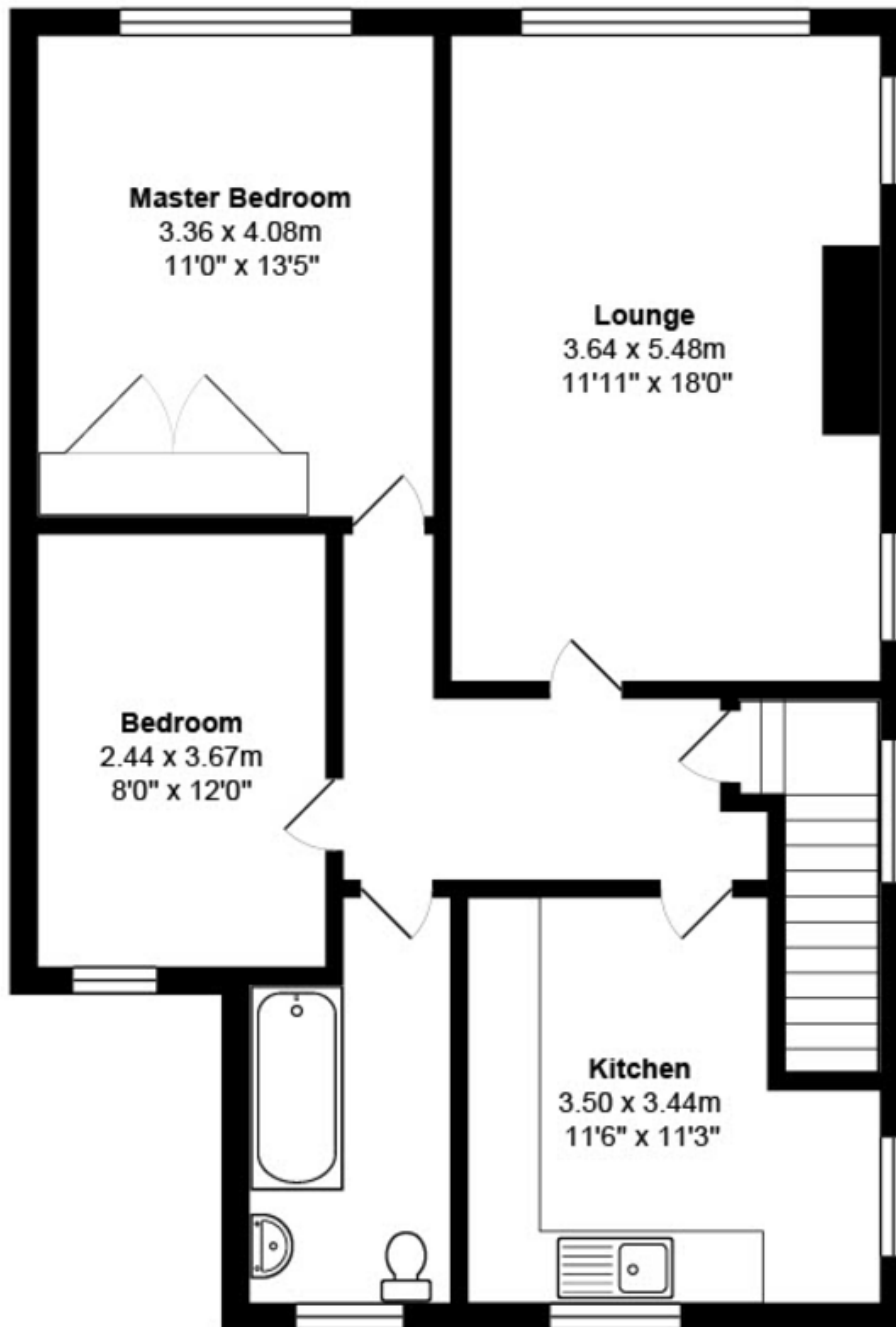
with access to garage to rear of garden.





%epcGraph_c_1_441%





Martin & Co Leeds Horsforth **0113 258 8664**
 93 New Road Side • Horsforth • Leeds • LS18 4QD
 T: 0113 258 8664 • E: horsforth@martinco.com <http://www.martinco.com>



Accuracy: References to the Tenure of a Property are based on information supplied by the Seller. The Agent has not had sight of the title documents. A Buyer is advised to obtain verification from their Solicitor. Items shown in photographs including but not limited to carpets, fixtures and fittings are not included unless specifically mentioned within the sales particulars. They may however be available by separate negotiation. Buyers must check the availability of any property and make an appointment to view before embarking on any journey to see a property. No person in the employment of the agent has any authority to make any representation about the property, and accordingly any information given is entirely without responsibility on the part of the agents, sellers(s) or lessors(s). Any property particulars are not an offer or contract, nor for part of one. **Sonic / Laser Tape:** Measurements taken using a sonic / Laser tape measure may be subject to a small margin of error. **All Measurements:** All Measurements are Approximate. **Services Not tested:** The Agent has not tested any apparatus, equipment, fixtures and fittings or services and so cannot verify that they are in working order or fit for the purpose. A Buyer is advised to obtain verification from their Solicitor or Surveyor.

