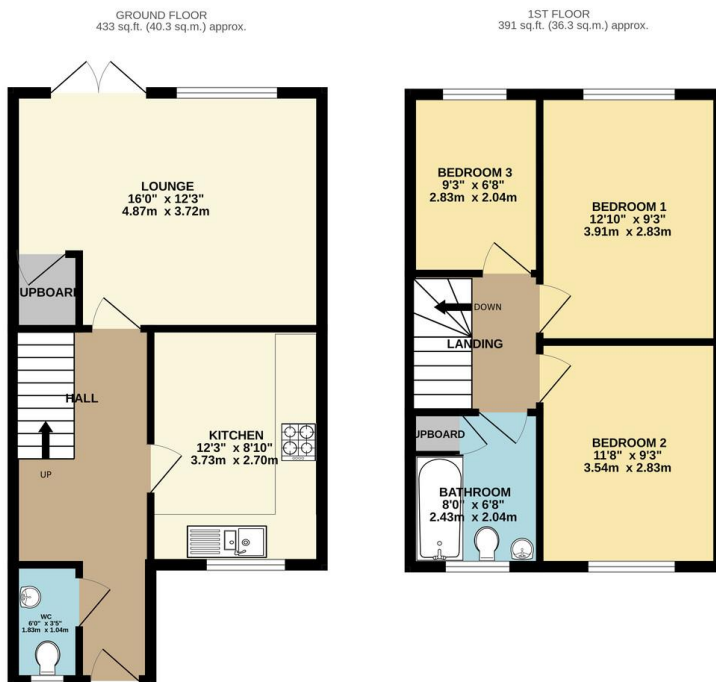


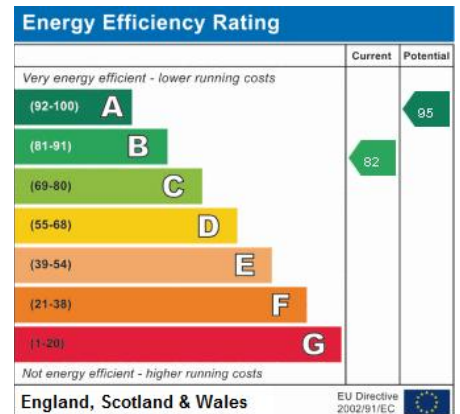
FOR SALE

3 Bed Detached House in Heatherley Grove, Wigston LE18 2EX
Offers In Excess Of £300,000

This modern three bedroom detached family home is nestled in the small exclusive development of Heatherley Grove in Wigston. The accommodation comprises main entrance hall, lounge, fitted kitchen, ground floor W.C, landing to three bedrooms, family shower room, landscaped gardens, off road parking and garage. Call Phillips George to view.



TOTAL FLOOR AREA: 824 sq.ft. (76.6 sq.m.) approx.
Whilst every attempt has been made to ensure the accuracy of the floorplan contained here, measurements of doors, windows, rooms and any other items are approximate and no responsibility is taken for any error, omission or mis-statement. This plan is for illustrative purposes only and should be used as such by any prospective purchaser. The services, systems and appliances shown have not been tested and no guarantee as to their operability or efficiency can be given.
Made with Metropix 02024



- Detached
- Modern Property
- Small Development
- Three Bedrooms
- Well Presented Throughout
- Refurbished Shower Room
- Landscaped Gardens
- Driveway

Agents Note: Whilst every care has been taken to prepare these sales particulars, they are for guidance purposes only. All measurements are approximate and for general guidance purposes only and whilst every care has been taken to ensure their accuracy, they should not be relied upon and potential buyers are advised to recheck the measurements.

