



13 Ash Close, Harefield

Uxbridge

£309,950



LAWRENCE RAND

13 Ash Close

Harefield, Uxbridge

Council Tax band: C

Tenure: Leasehold

EPC Energy Efficiency Rating:

EPC Environmental Impact Rating:

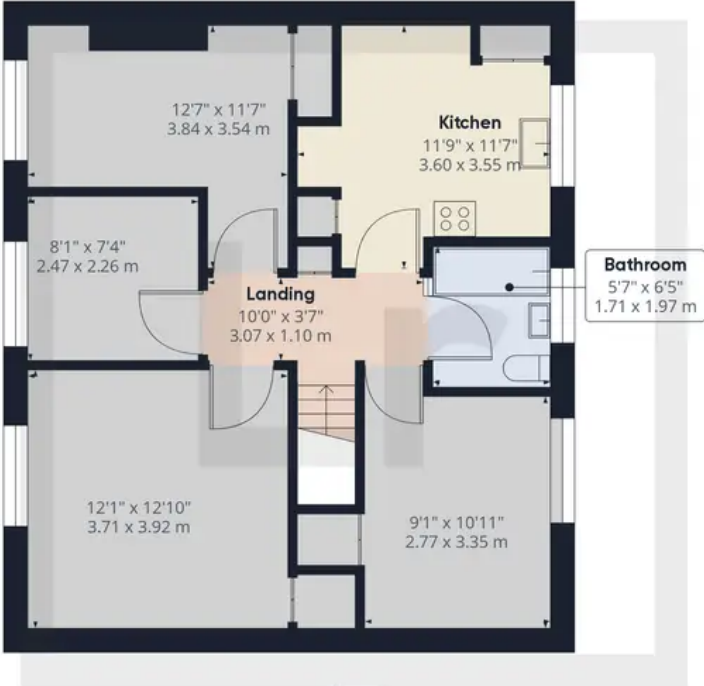
- First Floor Maisonette
- 3 Bedrooms
- Large Private Rear Garden
- No Upper Chain
- Cul-de-sac Location
- Close to Shops & Schools







Ground Floor



Floor 1

Approximate total area⁽¹⁾

699.56 ft²
64.99 m²

Reduced headroom

11.92 ft²
1.11 m²

(1) Excluding balconies and terraces

☒ Reduced headroom (below 1.5m/4.92ft)

While every attempt has been made to ensure accuracy, all measurements are approximate, not to scale. This floor plan is for illustrative purposes only.



Lawrence Rand

Lawrence Rand, 106 Victoria Road - HA4 0AL

01895 632211

Info@lawrence-rand.co.uk

www.lawrence-rand.co.uk/



LAWRENCE RAND