



The Lapwing, The Maude, New Romney

New Romney

Prices From **£300,000**

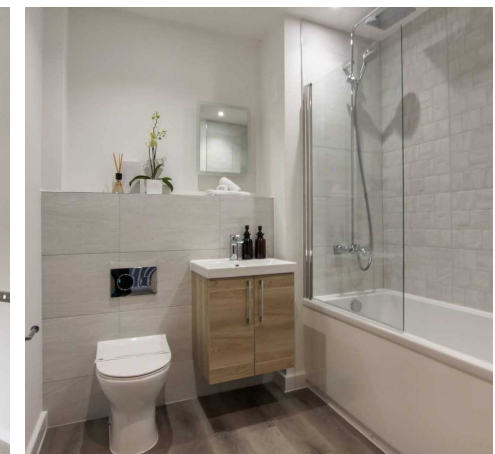
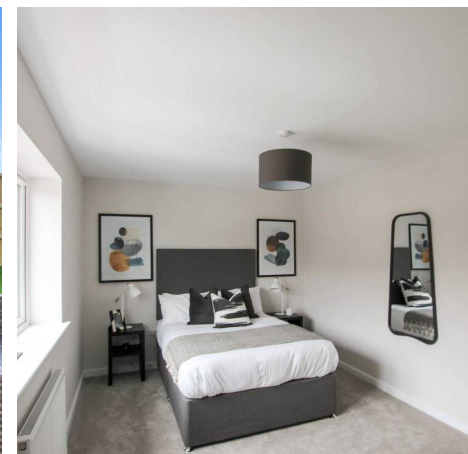
The Lapwing, The Maude

, New Romney

Available to buy with a green mortgage deal ----
Stunning two-bed end of terrace home in sought-after area. Spacious living area, high-quality finishes, and generous garden for outdoor living. Off-street parking and early reservation incentives available. Completion date early 2024. Arrange a viewing to experience luxurious living.

Tenure: Freehold

- Buy with Green Mortgage Deal
- Last Few Remaining
- Two Bedroom
- Semi Detached Home
- High Specification
- Over 900 Sqft





Entrance Hall

Living Room

18' 9" x 15' 9" (5.72m x 4.81m)

Kitchen

11' 9" x 7' 10" (3.57m x 2.39m)

Wc

Landing

Bedroom

15' 9" x 10' 2" (4.80m x 3.09m)

Bedroom

15' 9" x 9' 2" (4.80m x 2.80m)

Bathroom

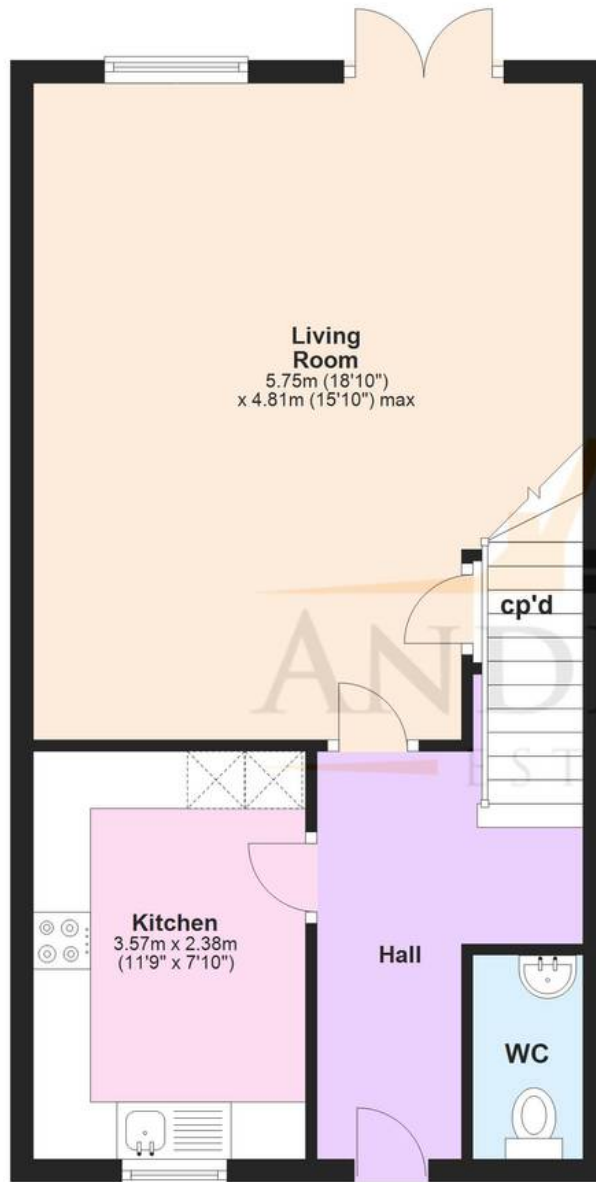
8' 6" x 7' 1" (2.60m x 2.17m)





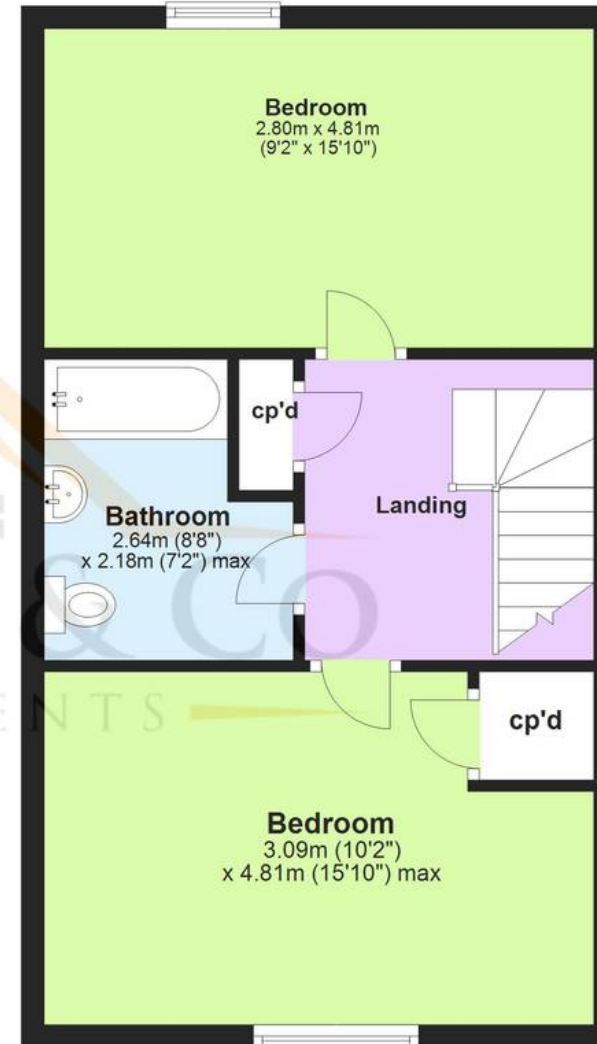
Ground Floor

Approx. 45.4 sq. metres (488.3 sq. feet)



First Floor

Approx. 27.8 sq. metres (299.2 sq. feet)



Total area: approx. 73.2 sq. metres (787.5 sq. feet)

Plans are for layout purposes only and are not drawn to scale, with any doors, windows and other internal features merely intended as a guide.

Plan produced using PlanUp.

These particulars are intended to give a fair and reliable description of the property but no responsibility for any inaccuracy or error can be accepted and do not constitute an offer or contract. We have not tested any services or appliances (including central heating if fitted) referred to in these particulars and purchasers are advised to satisfy themselves as to the working order and condition, if a property is unoccupied at any time there may be reconnection charges for any switched off/disconnected or drained services or appliances. All measurements are approximate.



Andrew & Co Estate Agents - New Romney

01797 362898

newromney@andrewandco.co.uk

