



Flats 1-10 25 Bridge Road, Great Yarmouth

£200,000 Share of Freehold

Nestled in a vibrant riverside location, this exquisite two-bedroom flat is a masterpiece amongst ten flats set in a brand-new development. The property seamlessly blends contemporary design with unparalleled river views, promising a lifestyle of comfort and convenience. Don't miss the chance to make this property your own and experience the epitome of modern urban living.

Tenure: Share of Freehold

Nestled in a vibrant riverside location, this exquisite two-bedroom flat is a masterpiece amongst ten flats set in a brand-new development. The property seamlessly blends contemporary design with unparalleled river views, promising a lifestyle of comfort and convenience. Don't miss the chance to make this property your own and experience the epitome of modern urban living.

LOCATION

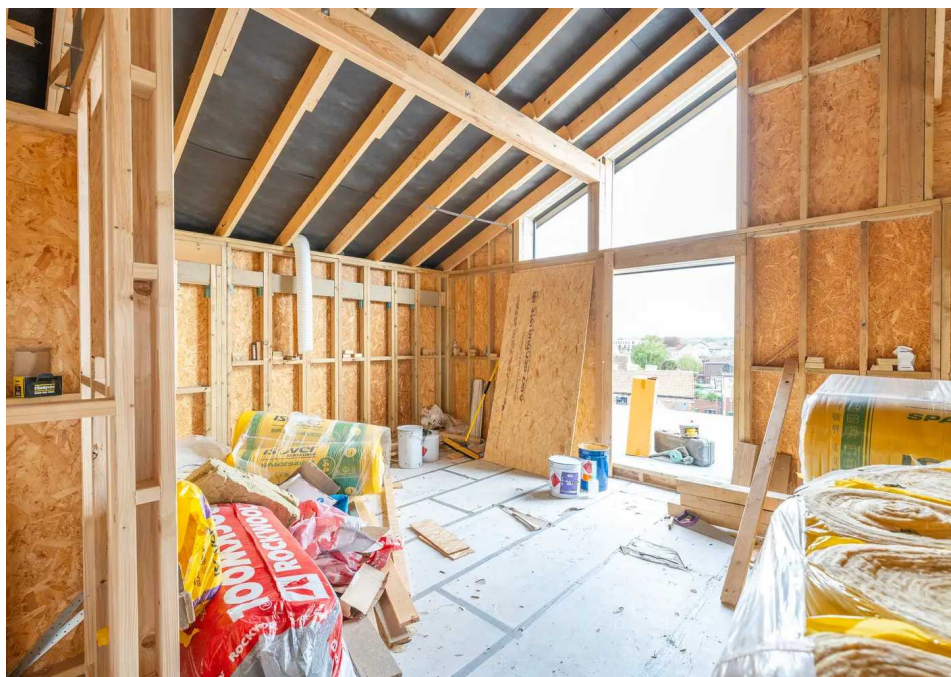
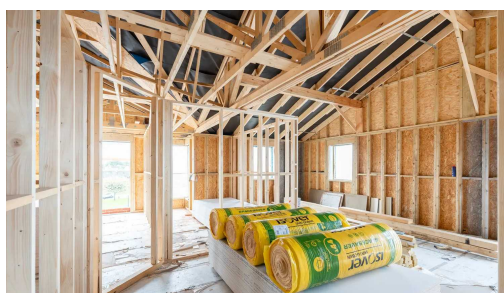
Bridge Road, located in the vibrant coastal town of Great Yarmouth, offers a convenient and well-connected setting for residents. Situated in the heart of this bustling seaside town, Bridge Road provides easy access to an array of amenities, including local shops, restaurants, schools, and recreational facilities. Great Yarmouth is celebrated for its picturesque coastline, offering pristine sandy beaches and stunning seafront promenades, perfect for leisurely strolls and enjoying the sea breeze. The town is rich in history and culture, with numerous historical landmarks and attractions, including the iconic Britannia Pier and the Sea Life Centre. This location benefits from excellent transportation links, ensuring swift commutes to



Nestled in a vibrant riverside location, this exquisite two-bedroom flat is a masterpiece amongst ten flats set in a brand-new development. The property seamlessly blends contemporary design with unparalleled river views, promising a lifestyle of comfort and convenience. Don't miss the chance to make this property your own and experience the epitome of modern urban living.

LOCATION

Bridge Road, located in the vibrant coastal town of Great Yarmouth, offers a convenient and well-connected setting for residents. Situated in the



Nestled in a vibrant riverside location, this exquisite two-bedroom flat is a masterpiece amongst ten flats set in a brand-new development. The property seamlessly blends contemporary design with unparalleled river views, promising a lifestyle of comfort and convenience. Don't miss the chance to make this property your own and experience the epitome of modern urban living.

LOCATION

Bridge Road, located in the vibrant coastal town of Great Yarmouth, offers a convenient and well-connected setting for residents. Situated in the heart of this bustling seaside town, Bridge Road provides easy access to an array of amenities, including local shops, restaurants, schools, and recreational facilities. Great Yarmouth is celebrated for its picturesque coastline, offering pristine sandy beaches and stunning seafront promenades, perfect for leisurely strolls and enjoying the sea breeze. The town is rich in history and culture, with numerous historical landmarks and attractions, including the iconic Britannia Pier and the Sea Life Centre. This location benefits from excellent transportation links, ensuring swift commutes to nearby towns and cities, making Bridge Road an ideal spot for those looking to embrace coastal living with urban convenience.

BRIDGE ROAD

The open-plan kitchen and living area, designed for modern-day living, serves as the heart of the home, boasting seamless connectivity and a welcoming ambiance. The kitchen is fitted with units and appliances to be able to cook your favourite meals. Completing this accommodation of comfort and style is a private balcony with each flat, offering a secluded outdoor space to unwind and soak in the breathtaking views of the tranquil river below.

The accommodation further comprises two double bedrooms, providing a peaceful retreat for rest and rejuvenation. The principle bedroom features a private ensuite, while a separate shower room caters to the needs of residents and guests alike.

AGENTS NOTES

We understand that this property is a share of freehold, with the other flats within the development, with 125 years left on the lease.

Maintenance fees - Approx £158 p/a

Completing in October 2024.



You can include any text here. The text can be modified upon generating your brochure.

You can include any text here. The text can be modified upon generating your brochure.

