



## Brindley Court, Letchworth Road, Stanmore

£335,000 Leasehold

Oyster Properties presents a spacious one-bedroom top-floor apartment in Stanmore's sought-after development, featuring an open-plan kitchen with Bosch appliances and a large rooftop terrace. With excellent transport links to Central London and a current rental income of £1600 per month, it's ideal for both first-time buyers and investors.

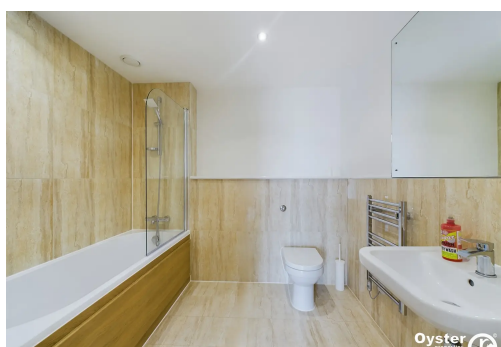




Oyster Properties is pleased to present this spacious one-bedroom top-floor apartment, situated within one of Stanmore's most luxurious and sought-after developments. This property boasts an open-plan modern kitchen with Bosch appliances and bright living area with access to a large rooftop terrace. The apartment includes a generously sized double bedroom with fitted wardrobes and a modern bathroom, as well as access to the development's landscaped gardens and fountains. With excellent transport links to Central London via Canons Park Tube station (Jubilee Line), this property is ideal for first-time buyers and investors, with a current rental income of £1600 per calendar month.



- Luxurious One Bedroom Apartment
- Double Bedroom with Built in Wardrobe
- Open Plan Living Room
- Fully Fitted Kitchen with Bosch Appliances
- Stylish Bathroom Suite
- Large Roof Top Terrace
- Lease Remaining: 112 Years
- Service Charge and Ground Rent: Approx.
- Lift Access
- Walking Distance to Canons Park Tube Station (Jubilee Line)





Disclaimer: Services, appliances, and boundaries of the property have not been tested. Measurements are approximate and for descriptive purposes only. These particulars are a general guide and do not constitute a contract. Oyster Properties and its agents act in good faith. No employee has authority to provide representations or warranties regarding the property



