



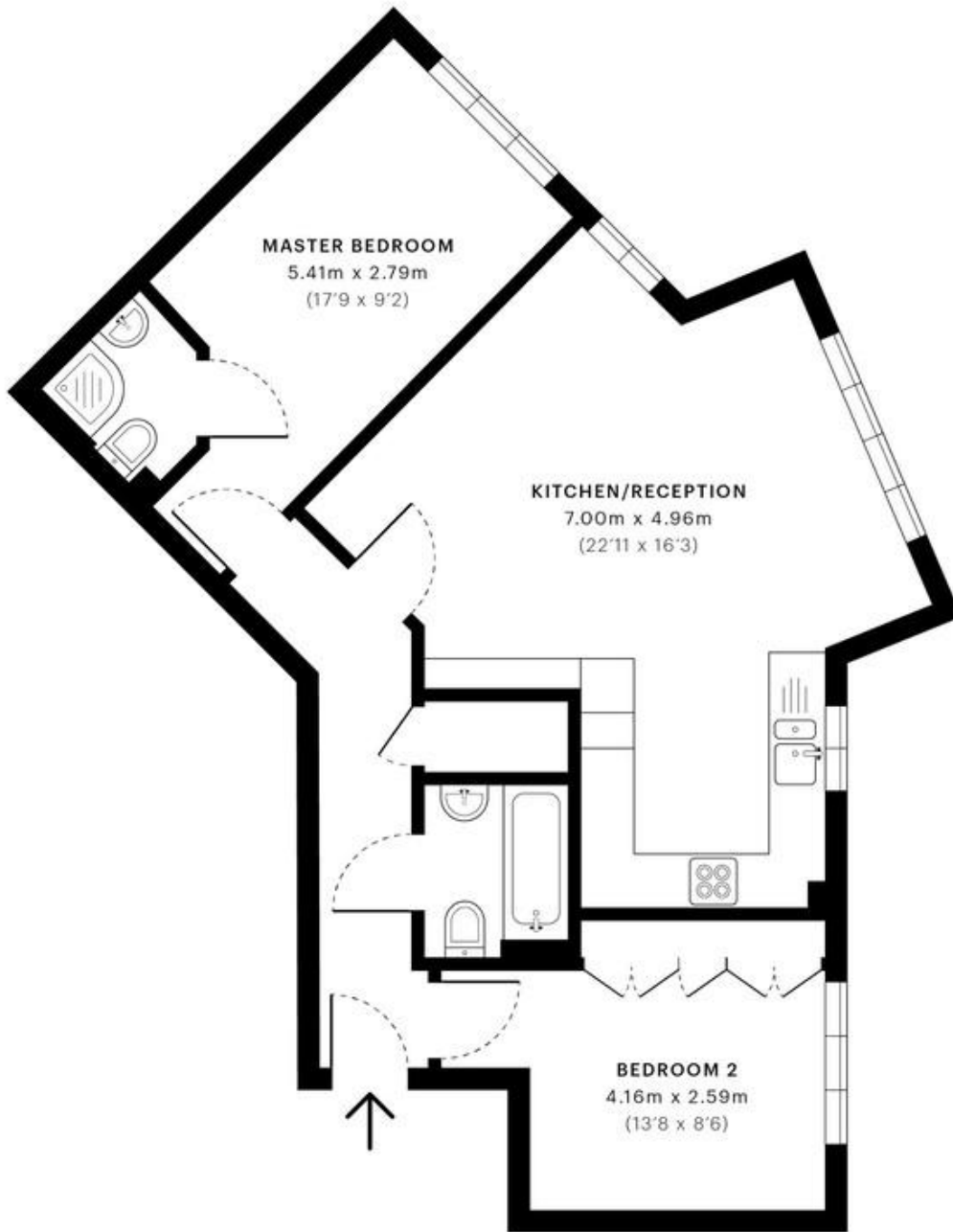
MILE



Blackheath House, Harlesden Road NW10  
£405,000 Leasehold

Welcome to Blackheath House, this well maintained block nestled on the quiet side street of Harlesden Road


- Purpose built block
- Ground floor apartment
- Two double bedrooms
- Two bathrooms
- Chain Free
- 107 years remaining on lease
- Chain free
- Good location
- Excellent Condition
- Close to shops and transport



— Ground Floor

 GROSS INTERNAL AREA (GIA)  
The footprint of the property.  
**65.8 Sqm / 708.8 Sqft**

 NET INTERNAL AREA (NIA)  
Excludes walls and external features.  
Includes washrooms, restricted head  
**63.6 Sqm / 684.5 Sqft**

 EXTERNAL STRUCTURAL FEATURES  
Balconies, terraces, verandas etc.  
**0.0 Sqm / 0.0 Sqft**

 RESTRICTED HEAD HEIGHT  
Limited use area under 1.5m  
**0.0 Sqm / 0.0 Sqft**