



**SALES**

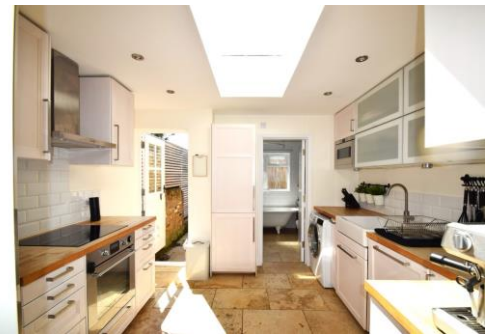
**LETTINGS**

**MANAGEMENT**

[chiswick@tatepartnership.co.uk](mailto:chiswick@tatepartnership.co.uk)

**020 8996 0000**

**TATEPARTNERSHIP.CO.UK**



**Twickenham TW2**

**£726,500**

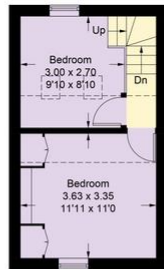
This charming Period Cottage is located in the highly popular neighbourhood, "Twickenham Green". Main features include the 75ft Landscaped Garden leading to the recently added Garden Office/Studio, the perfect peaceful addition for WFH, Art Studio or Exercise Studio. The main house accommodation includes: ground floor - entrance porch, open plan Living and Dining rooms, Fully Fitted Kitchen with stable door to Garden, modern bathroom. First floor - main double bedroom with feature double height ceiling and fitted wardrobes, second bedroom with feature double height ceiling, skylights and fixed loft access to galleried loft, which has been fitted with wall-to-wall cupboards adding extra storage capacity. Outside - to the front a delightful Private Garden, to the rear a truly impressive 75ft Landscaped Garden housing a very worthwhile Modern Home Office/Studio. Freehold with vacant possession.

### Second Cross Road, Twickenham

Approximate Gross Internal Area = 64.5 sq m / 694 sq ft  
Office = 11.5 sq m / 124 sq ft  
Total = 76 sq m / 818 sq ft



Ground Floor



First Floor

Illustration for identification purposes only, measurements are approximate, not to scale. floorplansUsketch.com © (ID1077399)

## EPC

