



Queens Drive, Ringmer, East Sussex, BN8 5FU

Offers Over £585,000

Queens Drive, Ringmer, East Sussex, BN8 5FU

An opportunity to purchase an immaculately presented and significantly upgraded three bedroom detached house occupying a corner position in the popular village of Ringmer.

The Property

The attention to detail on this property is commendable and there are significant upgrades that set this house apart from others. The accommodation has three bedrooms, two with matching fitted wardrobes, two bathrooms/shower room with chrome fittings and fully tiled walls and floors, a superb kitchen/dining room with quartz worktops and additional fitments, a lounge with feature fireplace and shelving and cupboards to either side, downstairs cloakroom and utility area.

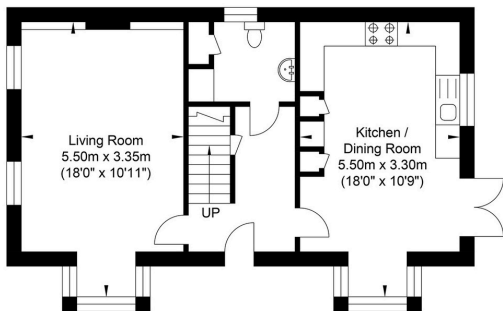
The garden runs seamlessly from inside to outside with continuous porcelain tiles. The garden is superbly presented and easy to maintain with artificial grass and mature shrubs and trees, all serviced by irrigation system and extensive outside lighting. There is also a garage with storage above and a long driveway in front.

The Location

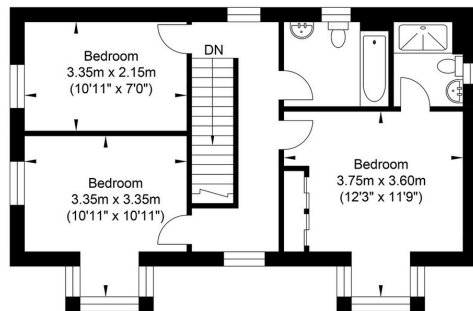
Ringmer is a large village with a parade of local shops and two cafes. There are schools for all ages and a variety of sporting clubs in the village itself. Lewes is only 3 miles distant by bus, car or bike on the new cycle path, Lewes is the county town of East Sussex, nestled within the South Downs National Park, with a direct fast train service to London. The station offers links to London in just over an hour and Brighton in under 20 minutes. The town offers an excellent range of shops including 2 prime supermarkets, Waitrose and Tesco, along with a variety of independent medieval and Georgian high street shops. Depot Cinema is a new state of the art three screen community cinema screening a variety of new releases, documentaries, classics & films for all the family. Additionally, Lewes offers a wide range of popular cafe's, old inns and restaurants as well as a farmers market held the first weekend of every month. The internationally recognised Glyndebourne Opera House is located approx 4 miles from Lewes. High quality sports facilities including Pool, Track, Tennis as well as County and Regional teams representing Football, Rugby, Cricket and Hockey offering great opportunities for adults and children alike. Highly regarded infant and primary and secondary schools are an easy walk as are Priory Secondary School, Sussex Downs College and Lewes Old Grammar School.



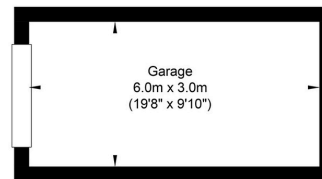
Queens Drive, Ringmer



Ground Floor
Approximate Floor Area
487.06 sq ft
(45.25 sq m)



First Floor
Approximate Floor Area
487.06 sq ft
(45.25 sq m)



Garage
Approximate Floor Area
193.75 sq ft
(18.0 sq m)



Approximate Gross Internal Area = 108.50 sq m / 1167.88 sq ft
Illustration for identification purposes only, measurements are approximate, not to scale.



Oakley

Your Sussex Property Expert

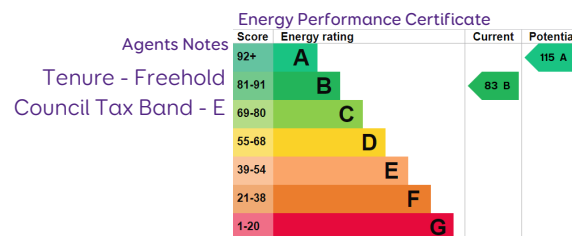
Lewes Property Hub
01273 487 444
14a High Street, Lewes BN7 2LN
www.oakleyproperty.com
lewes@oakleyproperty.com

We also have offices in:
Shoreham by Sea
Brighton & Hove
The London Office



A new way of marketing property

Get in touch to book a viewing or valuation of your own property



Please note:
These details have been produced in good faith and are believed to be accurate based upon the information supplied but they are not intended to form part of a contract. All statements contained in these particulars as to this property are made without responsibility on the part of Oakley, the vendors or lessors and are NOT to be relied on as statements or representations of fact. Any intending purchasers must satisfy themselves by inspection or otherwise as to the correctness of each of the statements contained in these particulars. The vendors, Oakley and any person who work in their employment do not have any authority to make or give any representation or warranty. The floor plan is for illustrative purposes only and the accuracy cannot be relied upon or guaranteed and no responsibility is taken for an error, omission or mis-statement. The total floor area shown has been taken from the EPC.

