

Head Office:
Dixon Kelley Estate Agents
1 Penn Court
Station Road, West Moors
Dorset. BH22 0JJ

DORSET PARK HOMES

DRAFT

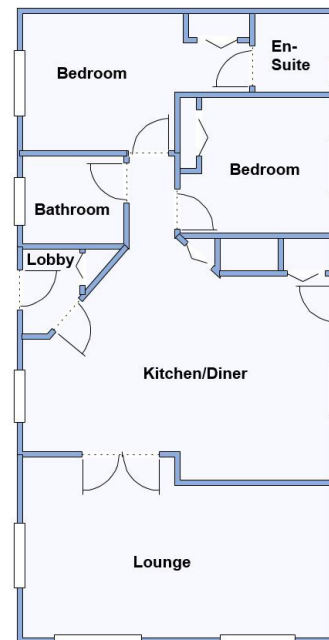
www.dorsetparkhomes.com

Telephone: 01202 877511

12 Juniper Way, Deer's Court, Horton Road, Three Legged Cross, Wimborne. BH21 6FH



Spacious Modern Park Home on Newly Developed Park



This drawing has been prepared for diagrammatic purpose only. Not to scale.

2-Bedroom Park Home - approx 40' x 20'

Accommodation & approximate room dimensions:

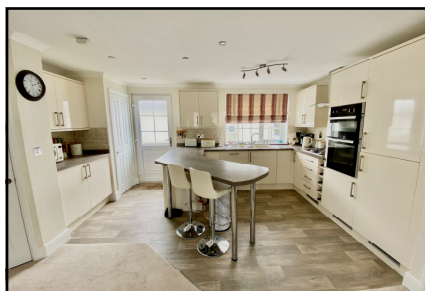
- Prestige 'Anthem' circa 2018
- Entrance Lobby: Cloaks cupboard.
- Lounge: approx 19'2" x 11'3" max. Feature fire-place & Bay windows.
- Kitchen/Diner: approx 19'2" x 15'2" max. Superb fitted kitchen with an excellent range of floor and wall cupboards. Built-in oven & hob with cooker hood over (untested). Integrated washing machine, dishwasher & fridge/freezer. Cupboard housing gas combination boiler. Door to garden.
- Bedroom 1: approx 13'4" x 8'8" max including Dressing Area with fitted wardrobes.
- En-Suite Shower Room
- Bedroom 2: approx 9'1" x 8'5". Fitted wardrobe.
- Bathroom: Panelled bath. Wash basin & WC.
- Gas Central Heating (system untested)
- PVCu Double-Glazing
- Small Garden with Patio Area & Metal Shed
- Parking on Plot
- Age Restriction 45+ Pets Considered
- Gated, Developing Residential Park set in 34 acres of private country park.

Price: £225,000

VIEWING STRICTLY BY APPOINTMENT WITH THE VENDOR'S AGENT Dorset Park Homes 01202 877511

IMPORTANT NOTE: These particulars are believed to be correct but their accuracy is not guaranteed. They do not form part of any contract. Nothing in these particulars shall be deemed to be a statement that the property is in good structural condition or otherwise, nor that any of the services, appliances, equipment or facilities are in good working order or have been tested. Purchasers should satisfy themselves on such matters prior to purchase Ref.W047778

'Pet Friendly' Park



**Pitch Fee: approx £260 per month including sewerage
Subject to Annual Review
Council Tax Band: 'B'**

Tenure: 1983 Mobile Homes Act Agreement

The recommended specialist in Park Home sales
Proprietor: Simon Dixon

