

10 Paget Road, Great Yarmouth

£230,000 Freehold

GUIDE PRICE: £230,000-£240,000. An elegant four bedroom family home with spacious accommodation throughout, including extensively high ceilings and an exceptionally large underfloor basement. This property is perfect for families needing a wealth of space.

Council Tax band: TBD

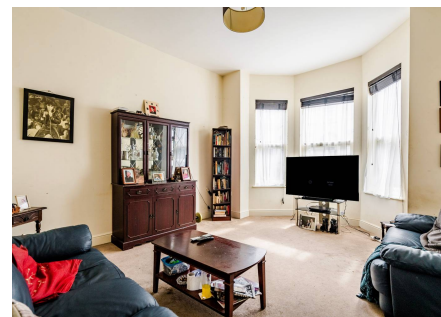
Tenure: Freehold

GUIDE PRICE: £230,000-£240,000. An elegant four bedroom family home with spacious accommodation throughout, including extensively high ceilings and an exceptionally large underfloor basement. This property is perfect for families needing a wealth of space.

LOCATION

The charm of this historic Coastal town is on your doorstep, offering a diverse range of amenities, entertainment venues, and cultural attractions. Whether you're exploring the bustling local markets, enjoying a leisurely stroll along the picturesque sandy beaches, or immersing yourself in the town's rich Maritime wealth of history, Paget Road places you in the heart of it all.

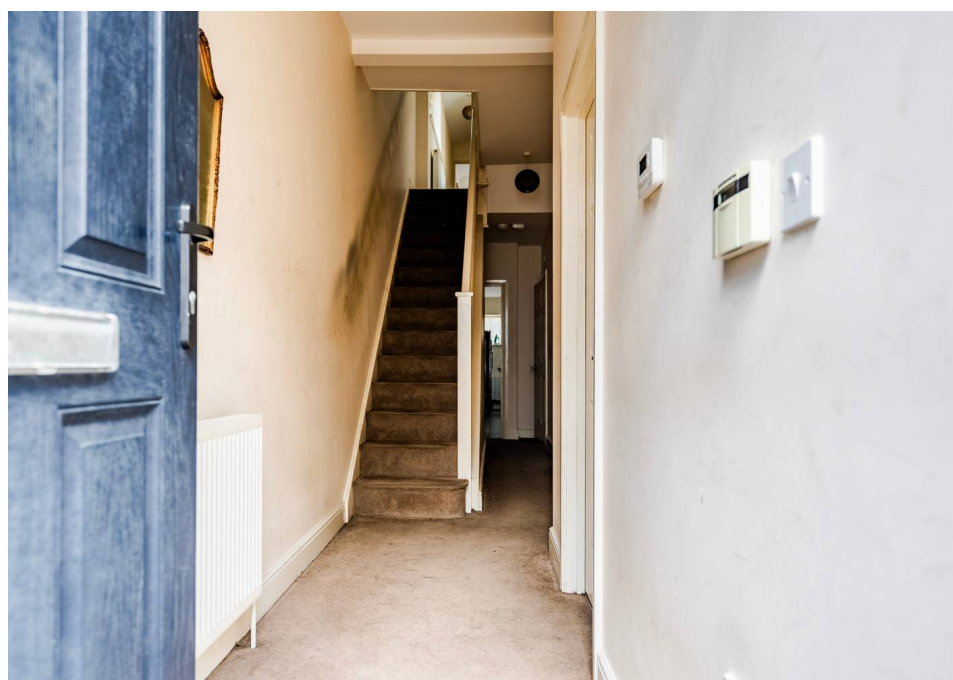
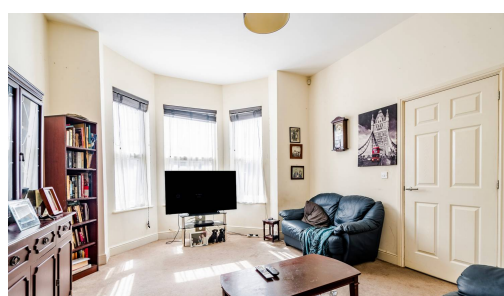
The property is within proximity to local nurseries, schools, parks, shops, and easy access to transport links into Norwich and a coach to London Victoria. This location presents an ideal balance between vibrant City living and the tranquillity of a Coastal retreat.



GUIDE PRICE: £230,000-£240,000. An elegant four bedroom family home with spacious accommodation throughout, including extensively high ceilings and an exceptionally large underfloor basement. This property is perfect for families needing a wealth of space.

LOCATION

The charm of this historic Coastal town is on your doorstep, offering a diverse range of amenities, entertainment venues, and cultural attractions. Whether you're exploring the bustling local markets, enjoying a leisurely stroll along the picturesque



GUIDE PRICE: £230,000-£240,000. An elegant four bedroom family home with spacious accommodation throughout, including extensively high ceilings and an exceptionally large underfloor basement. This property is perfect for families needing a wealth of space.

LOCATION

The charm of this historic Coastal town is on your doorstep, offering a diverse range of amenities, entertainment venues, and cultural attractions. Whether you're exploring the bustling local markets, enjoying a leisurely stroll along the picturesque sandy beaches, or immersing yourself in the town's rich Maritime wealth of history, Paget Road places you in the heart of it all.

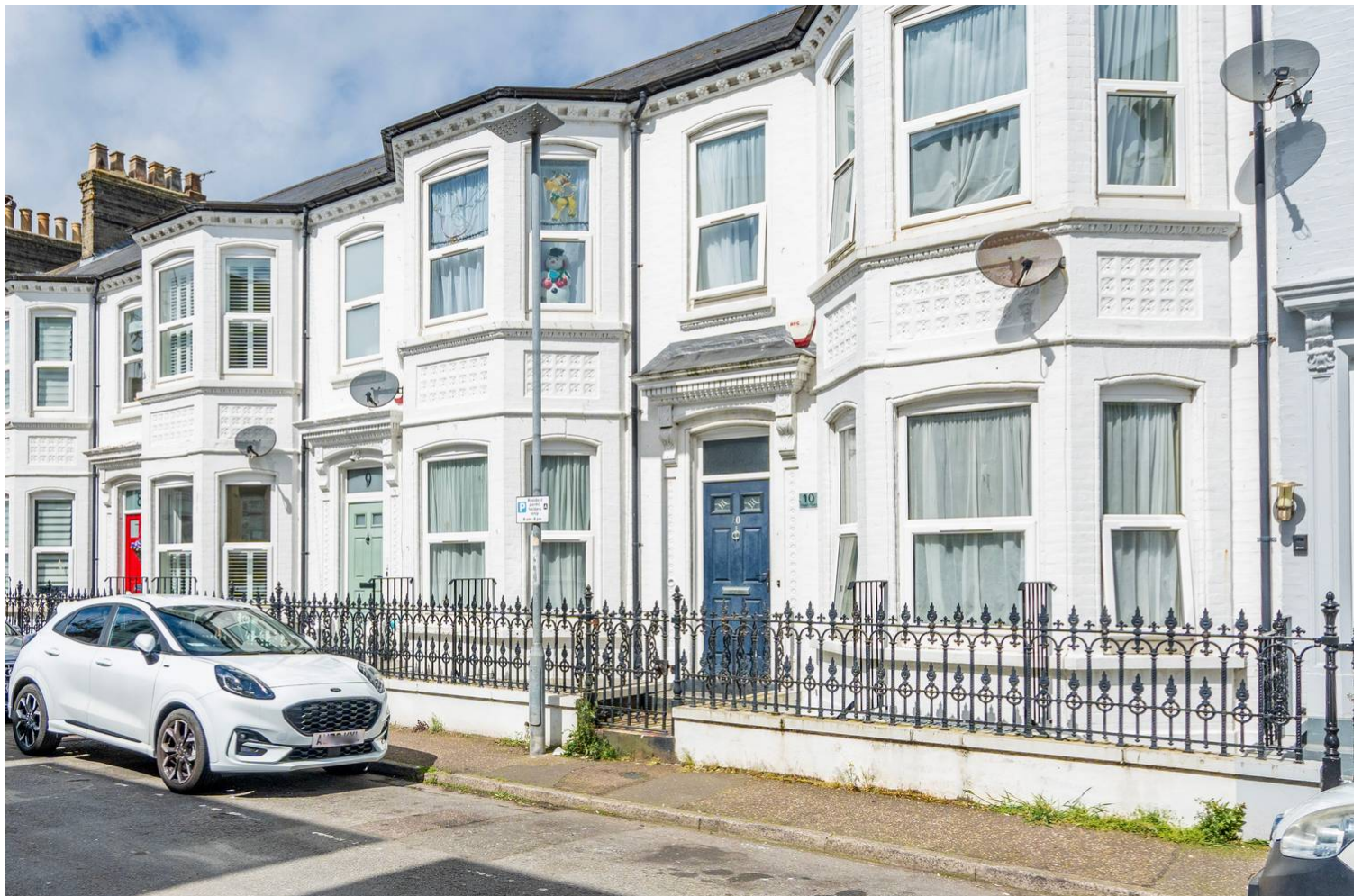
The property is within proximity to local nurseries, schools, parks, shops, and easy access to transport links into Norwich and a coach to London Victoria. This location presents an ideal balance between vibrant City living and the tranquillity of a Coastal retreat.

PAGET ROAD

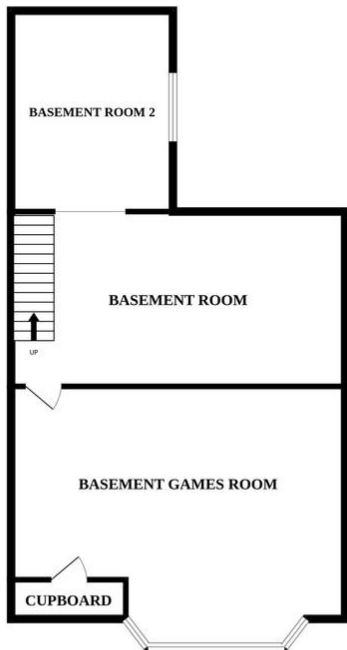
This large four bedroom white-stucco terraced family home presents a rare opportunity to own an elegant residence, just moments from the beach. Stepping inside, you are welcomed by the generous hallway and living spaces throughout; including two large reception rooms; one boasting a bay-fronted lounge exuding classic light and charm. The generous high ceilings throughout the home add to the overall sense of space and elegance. The additional benefit 600 sq ft basement potential for a variety of uses (stp) and is currently used as a games room with two adjoining storage vaults.

The spacious kitchen/breakfast room is ideal for both casual dining and entertaining. The property boasts a master bedroom with en-suite shower room, three further bedrooms, separate family shower room, games room and a courtyard garden. Situated just a short walk from the beach and local amenities, this home offers a perfect blend of comfort and convenience. With it's flawless combination of period features and modern comforts, this property presents an exceptional opportunity for those seeking a home in a sought-after location, with a versatile basement area which will allow the buyer to make their own stamp on the property and adds to the uniqueness.

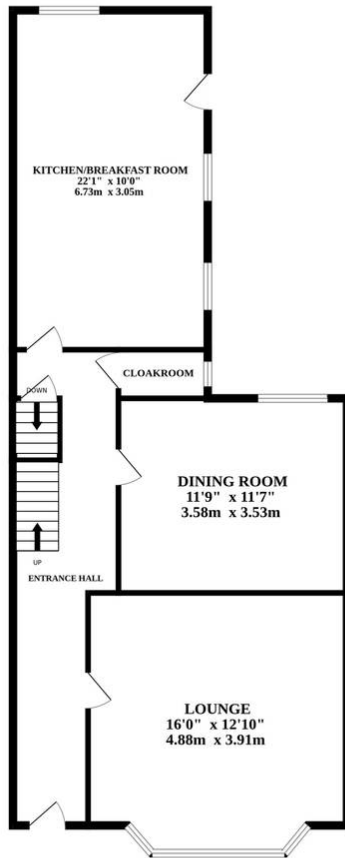
AGENTS NOTE



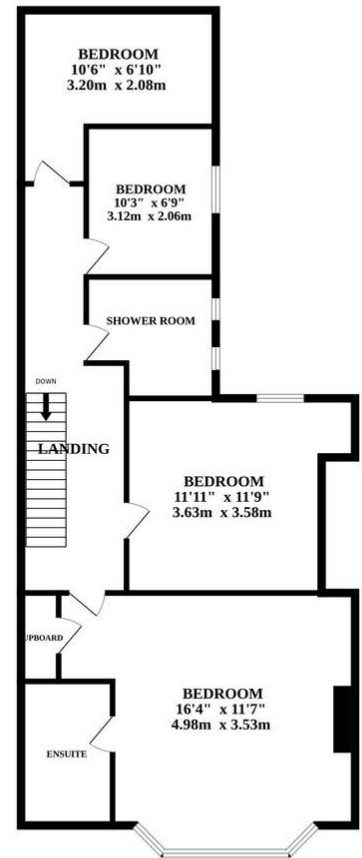
BASEMENT



GROUND FLOOR



1ST FLOOR



Whilst every attempt has been made to ensure the accuracy of the floorplan contained here, measurements of doors, windows, rooms and any other items are approximate and no responsibility is taken for any error, omission or mis-statement. This plan is for illustrative purposes only and should be used as such by any prospective purchaser. The services, systems and appliances shown have not been tested and no guarantee as to their operability or efficiency can be given.
Made with Metropix ©2024

You can include any text here. The text can be modified upon generating your brochure.

You can include any text here. The text can be modified upon generating your brochure.

