

Suffolk Road, Bournemouth, Dorset,

BH2 6AU

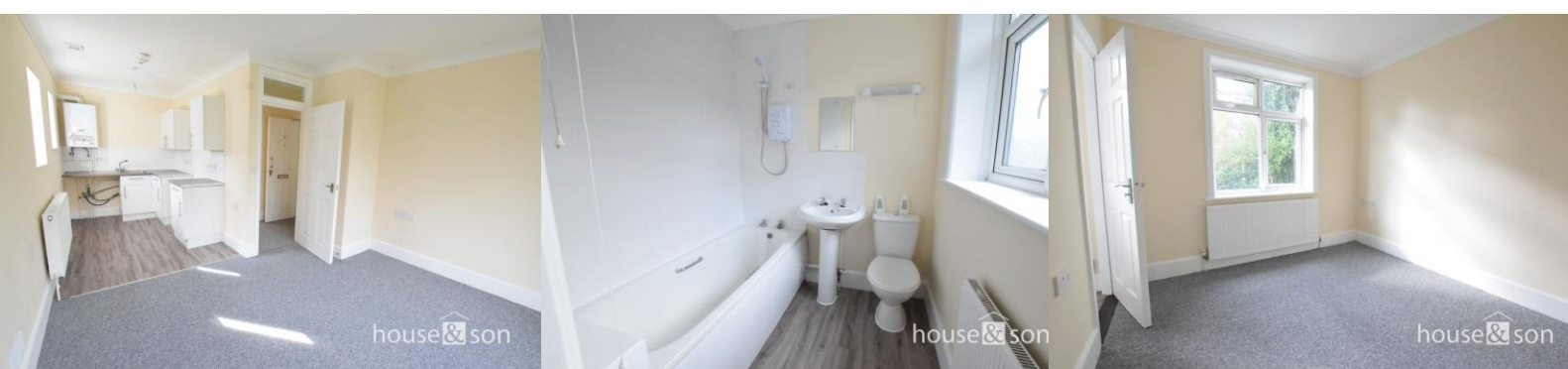
1 Bedroom

house & son

www.houseandson.net

01202 242000

nick.b@houseandson.net



Features:

ONE DOUBLE
BEDROOM

UNFURNISHED

REFURBISHED
THROUGHOUT

GREAT LOCATION

COMMUNAL
OUTSIDE SPACE

ON SITE PARKING

GAS CENTRAL
HEATING

Description:

TOWN CENTRE – An UNFURNISHED one bedroom flat situated within walking distance of both Westbourne and the Town Centre. ONE DOUBLE BEDROOM; open plan lounge/kitchen (kitchen comes with electric cooker and space for both a fridge freezer and washing machine); bathroom with shower facility. Property was recently REFURBISHED THROUGHOUT, and benefits from GAS CENTRAL HEATING, COMMUNAL OUTSIDE SPACE, and ON SITE PARKING. A bright and modern apartment in a convenient, central location. FULLY MANAGED. AVAILABLE 20/05/2024.

£850 pcm

Available 20th May 2024