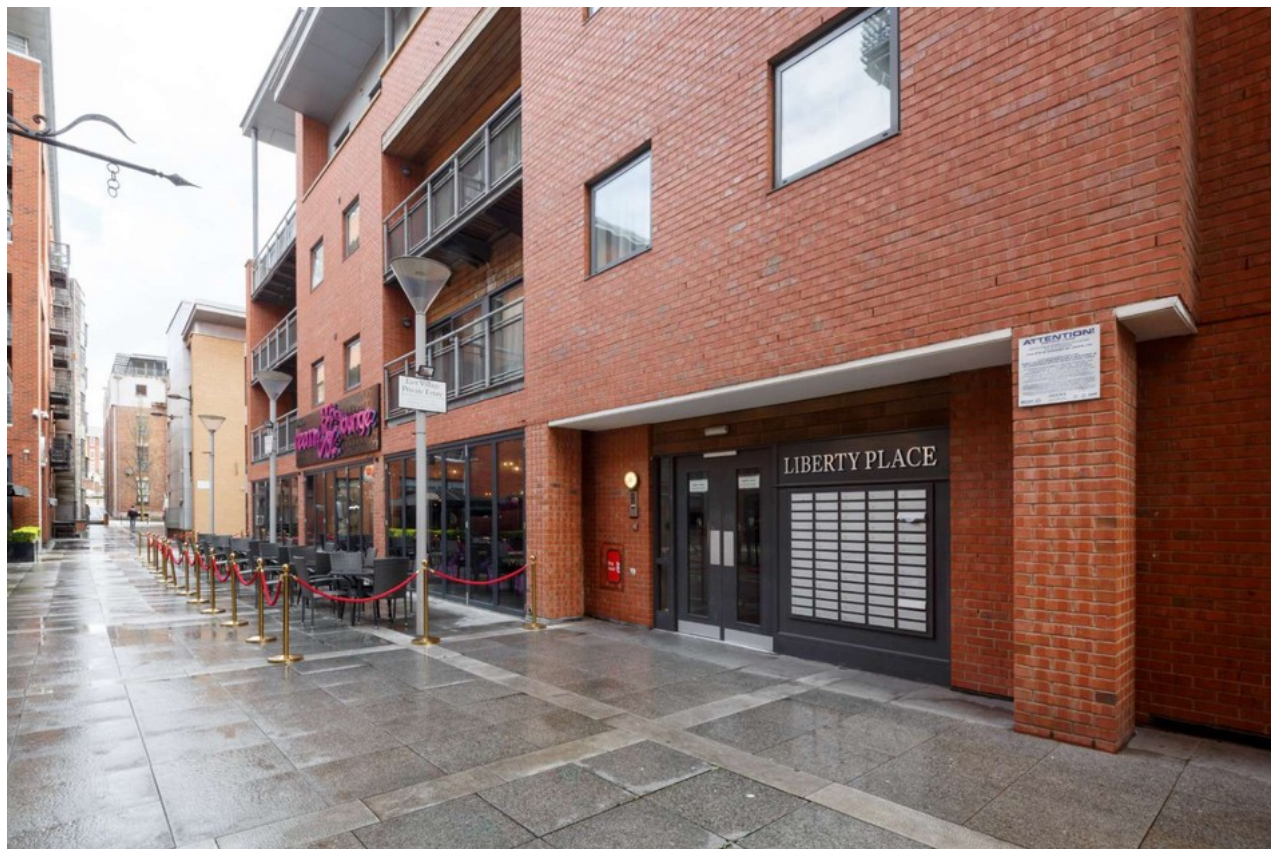


# Madison Square Liverpool



- 📍 Balcony
- 📍 Right In The Heart Of The Popular Ropewalks
- 📍 Restaurants & Bars Nearby
- 📍 10 Minute Walk From Liverpool Central Train Station
- 📍 City Centre Living
- 📍 Open Plan
- 📍 Leasehold



Bedroom 🛏️ 2 Bathroom 🚿 1 Reception 👑 1

Fixed Price

**£180,000**