

To Let 2 bed flat

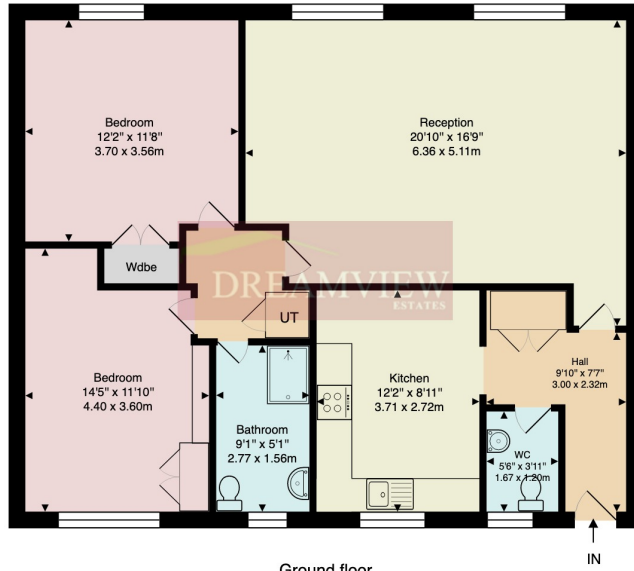


*A SUPERB, NEWLY MODERNISED 888 SQ FT/82 SQ MT 2 BEDROOM GROUND FLOOR FLAT IN A MODERN PURPOSE-BUILT BLOCK JUST OFF THE HIGH STREET, LITERALLY SECONDS FROM THE SHOPS, TRANSPORT AND PLACES OF WORSHIP
*THE BUSES RUN AT THE TOP OF THE DEVELOPMENT GIVING EASY ACCESS TO





Howton Place WD23 1HX



Ground floor

Approx. Gross Internal Area: 888 ft² ... 82.5 m²

All measurements and areas are approximate only.
Dimensions are not to scale. This plan is for guidance only and must not be relied upon as a statement of fact.

HOWTON PLACE, OFF HIGH STREET, BUSHEY HERTS, WD23 1DW

*A SUPERB, NEWLY MODERNISED 888 SQ FT/82 SQ MT 2 BEDROOM GROUND FLOOR FLAT IN A MODERN PURPOSE-BUILT BLOCK JUST OFF THE HIGH STREET, LITTERALLY SECONDS FROM THE SHOPS, TRANSPORT AND PLACES OF WORSHIP

*THE BUSES RUN AT THE TOP OF THE DEVELOPMENT GIVING EASY ACCESS TO STANMORE AND BUSHEY/OXHEY STATION AND INTO WATFORD

*Nearest Train Stations

*Stanmore Jubilee London Underground Station 2.4 Miles

*Carpenders Park Station 1.8 Miles

*Bushey & Oxhey Station 1.9 miles

*Hatch End Station 2.1 miles

*THIS LOVELY BRIGHT AND SPACIOUS FLAT HAS JUST BEEN SUBJECT A COMPLETE TRANSFORMATION IN 2021 INCLUDING NEW RADIATORS, NEW WOODEN FLOORING AND DOORS, NEW CHROME ELECTRICAL SOCKETS

*THE FLAT HAS 2 GOOD SIZE DOUBLE BEDROOMS BOTH WITH WARDROBES, A LARGE 20' LIVING/DINING ROOM, A BRAND NEW FULLY FITTED ITALIAN KITCHEN WITH NEW BOSCH APPLIANCES INCLUDING A FRIDGE FREEZER, 6 PLACE DISHWASHER, OVEN AND HOB

*A BOSCH WASHING MACHINE AND HOOVER TUMBLE DRYER ARE ALSO BEING SUPPLIED BUT THE FLAT IS OFFERED UNFURNISHED

*THERE IS LOVELY LIGHT GREY WOODEN FLOORING THROUGHOUT WITH COMPLIMENTING NEW GREY ROLLER BLINDS

*THIS SUPERB SPACIOUS FLAT IS READY FOR IMMEDIATE OCCUPATION FROM JUNE AND MUST BE VIEWED!



34 Golders Green Road, London NW11 8LL

murray@dreamviewestates.co.uk

020 8455 0055

best
agent

*THERE ARE LARGE COMMUNAL GARDENS TO FRONT AND REAR AND RESIDENTS
PARKING ON A 1ST COME
1ST SERVED PERMIT BASIS

*THE FLAT CAN BE RENTED AT £1650 PCM

*ACCOMMODATION WELL LAID OUT AND AS PER PLAN

*Lounge/Dining Room 6.36m x 5.1m max (20'10 x 16'9)

*Kitchen 3.71m x 2.72m (12'2 x 8'11)

*Bedroom One 3.7m x 3.56m (12'2 x 11'8)

*Bedroom Two 4.4m max x 3.60m (14'5 x 11'10)

*Bathroom 2.77m x 1.56m (9'1 x 5')

*Additional Second WC/Cloakroom

*Rent £1,650.00 per month (£380 per week)

*OFFERED UNFURNISHED

*Deposit £1900

*Council Tax Band D

*Please note Minimum tenancy is 12 months

*Referencing required

*PLEASE NOTE:- The Landlord is a Director of Dreamview Estates



34 Golders Green Road, London NW11 8LL

murray@dreamviewestates.co.uk

020 8455 0055

best
agent