



Princeton Close, Salford

Salford



£250,000

16 Princeton Close

Salford, Salford

****Views over Buile Hill Park to the Rear**** Tucked away in a quiet cul-de-sac, just a stone's throw from Buile Hill Park is this fantastic, modern three bedroom property! Well-presented throughout, boasting a modern kitchen diner and a generous garden, this is a great first time home for a family! Tenure: Leasehold

- Modern Three Bedroom Family Home
- Situated on a Quiet Cul-de-Sac with Views Over Buile Hill Park to the Rear
- Spacious Family Lounge and a Downstairs W/C
- Modern Kitchen Diner and a Three-Piece Family Bathroom
- Three Well-Proportioned Bedrooms
- Off-Road Parking to the Front
- Generous, Well-Presented Garden to the Rear
- Within Walking Distance of Salford Royal Hospital
- Close to Local Schooling, Well-Kept Parks and Excellent Transport Links into Salford Quays, Media City and Manchester City Centre
- Ideal First Time Home in a Great Family Location, Viewing is Highly Recommended!



HILLS



Entrance Hallway

Ceiling light point, wall-mounted radiator, access to the lounge and W.C

WC

Fitted two piece white suite comprising of low level WC and pedestal hand wash basin. High quality wood effect laminate flooring and a heated towel rail

Lounge

Dimensions: 15' 7" x 14' 6" (4.75m x 4.42m). A bright and welcoming lounge complete with high quality wood effect laminate flooring, electric fire point with feature surround, ceiling light point, wall mounted radiators and staircase leading to first floor.

Kitchen

Dimensions: 14' 5" x 8' 3" (4.39m x 2.51m). Fitted with a stunning range of wall and base units with complementary work surfaces and an integral sink and drainer unit. Integrated oven, hob and extractor. Built in fridge/freezer, with space and plumbing for a washing machine. Wall-mounted radiator and a double-glazed window. Access to understairs storage. Patio doors leading to the rear garden.

Landing

Ceiling light point and access to all rooms

Bedroom One

Dimensions: 13' 9" x 8' 4" (4.19m x 2.54m). Ceiling light point, wall mounted radiator and double glazed window to the front elevation. Fitted wardrobes

Bedroom Two

Dimensions: 10' 1" x 8' 4" (3.07m x 2.54m). Ceiling light point, wall mounted radiator and a double glazed window to the rear.

Bedroom Three

Dimensions: 7' 4" x 5' 10" (2.23m x 1.78m). Ceiling light point, wall mounted radiator and a double glazed window

Bathroom

Fitted with a fully tiled, fantastic three piece white suite



Entrance Hallway

Ceiling light point, wall-mounted radiator, access to the lounge and W.C

WC

Fitted two piece white suite comprising of low level WC and pedestal hand wash basin. High quality wood effect laminate flooring and a heated towel rail

Lounge

Dimensions: 15' 7" x 14' 6" (4.75m x 4.42m). A bright and welcoming lounge complete with high quality wood effect laminate flooring, electric fire point with feature surround, ceiling light point, wall mounted radiators and staircase leading to first floor.

Kitchen

Dimensions: 14' 5" x 8' 3" (4.39m x 2.51m). Fitted with a stunning range of wall and base units with complementary work surfaces and an integral sink and drainer unit. Integrated oven, hob and extractor. Built in fridge/freezer, with space and plumbing for a washing machine. Wall-mounted radiator and a double-glazed window. Access to understairs storage. Patio doors leading to the rear garden.

Landing

Ceiling light point and access to all rooms

Bedroom One

Dimensions: 13' 9" x 8' 4" (4.19m x 2.54m). Ceiling light point, wall mounted radiator and double glazed window to the front elevation. Fitted wardrobes

Bedroom Two

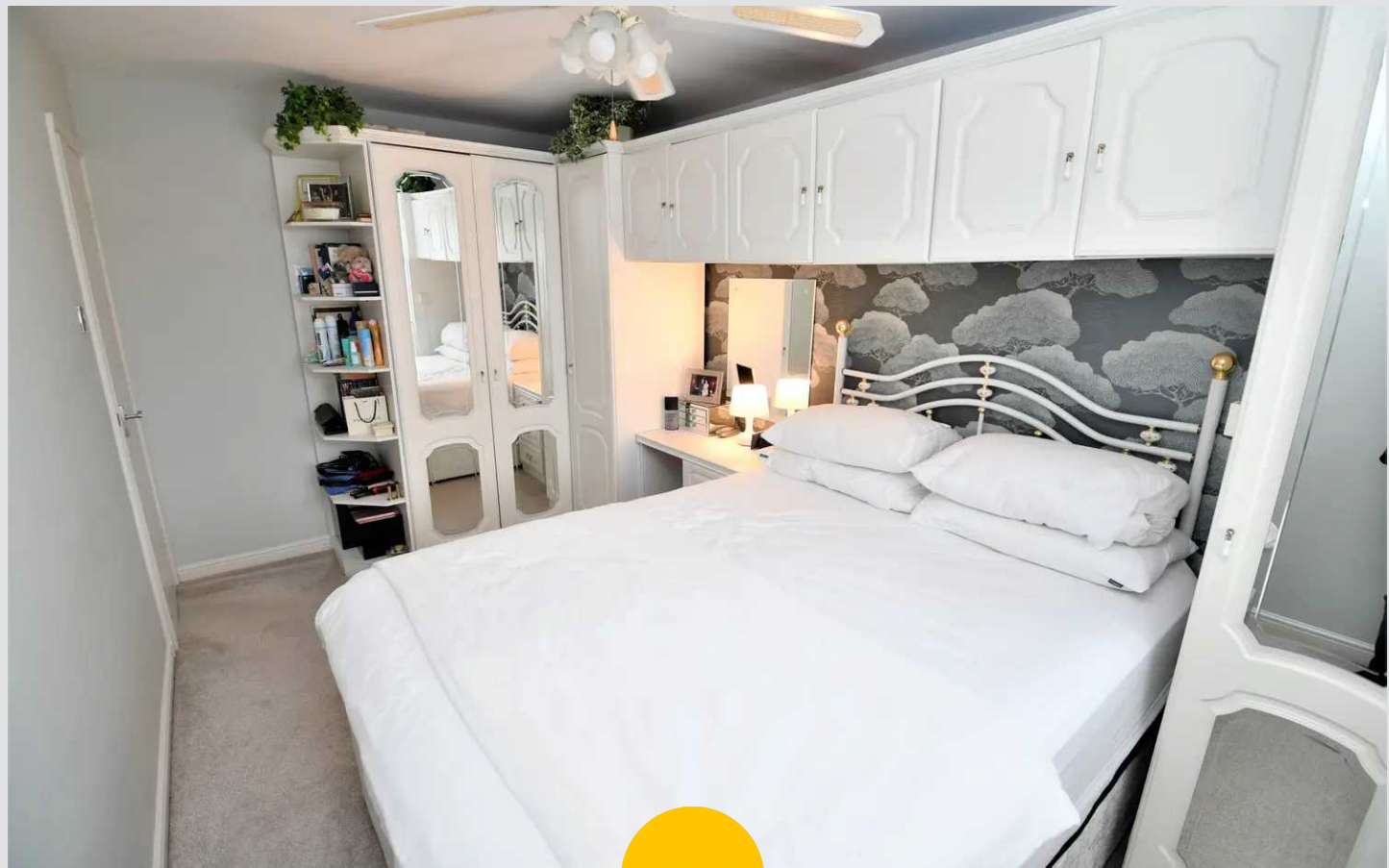
Dimensions: 10' 1" x 8' 4" (3.07m x 2.54m). Ceiling light point, wall mounted radiator and a double glazed window to the rear.

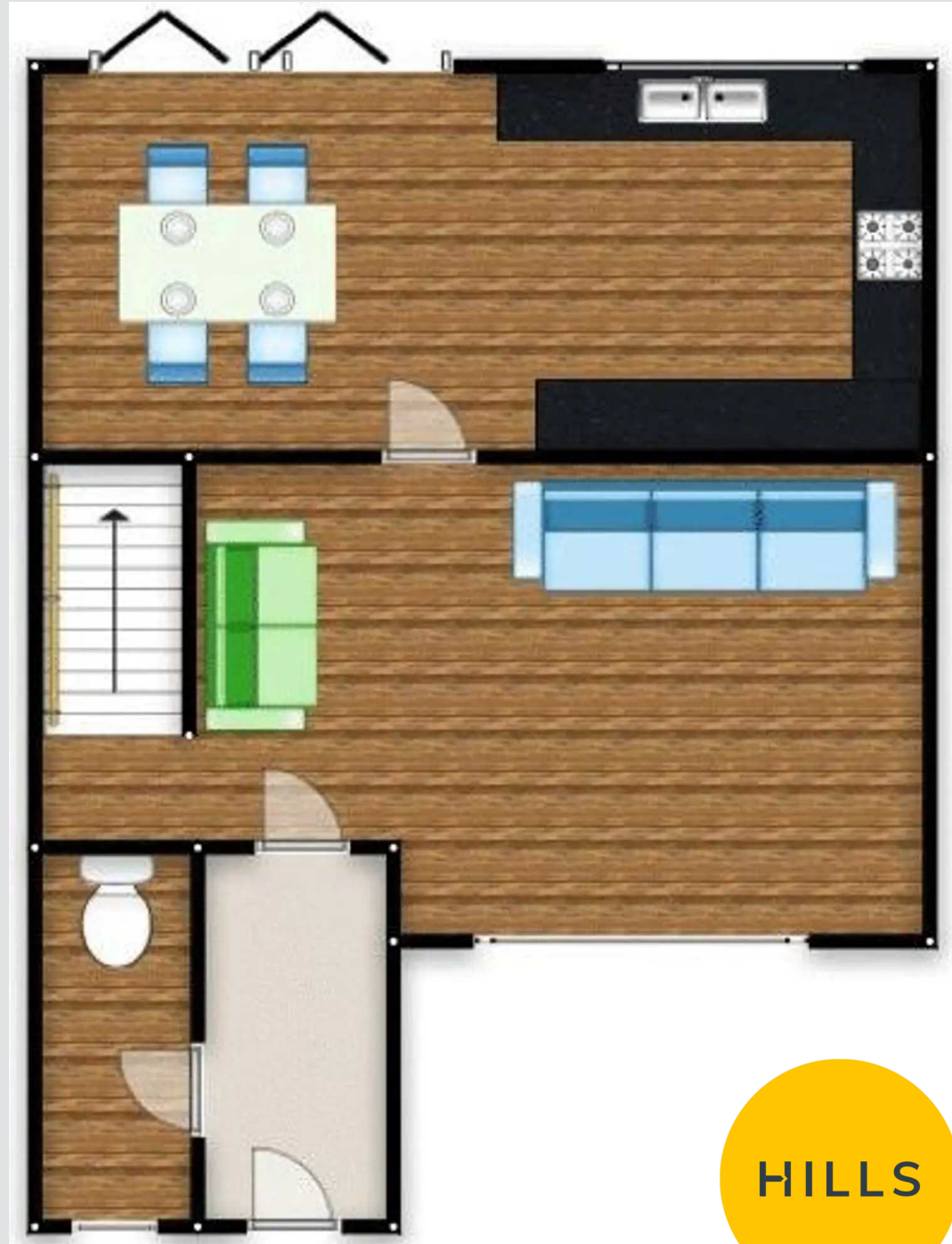
Bedroom Three

Dimensions: 7' 4" x 5' 10" (2.23m x 1.78m). Ceiling light point, wall mounted radiator and a double glazed window

Bathroom

Fitted with a fully tiled, fantastic three piece white suite

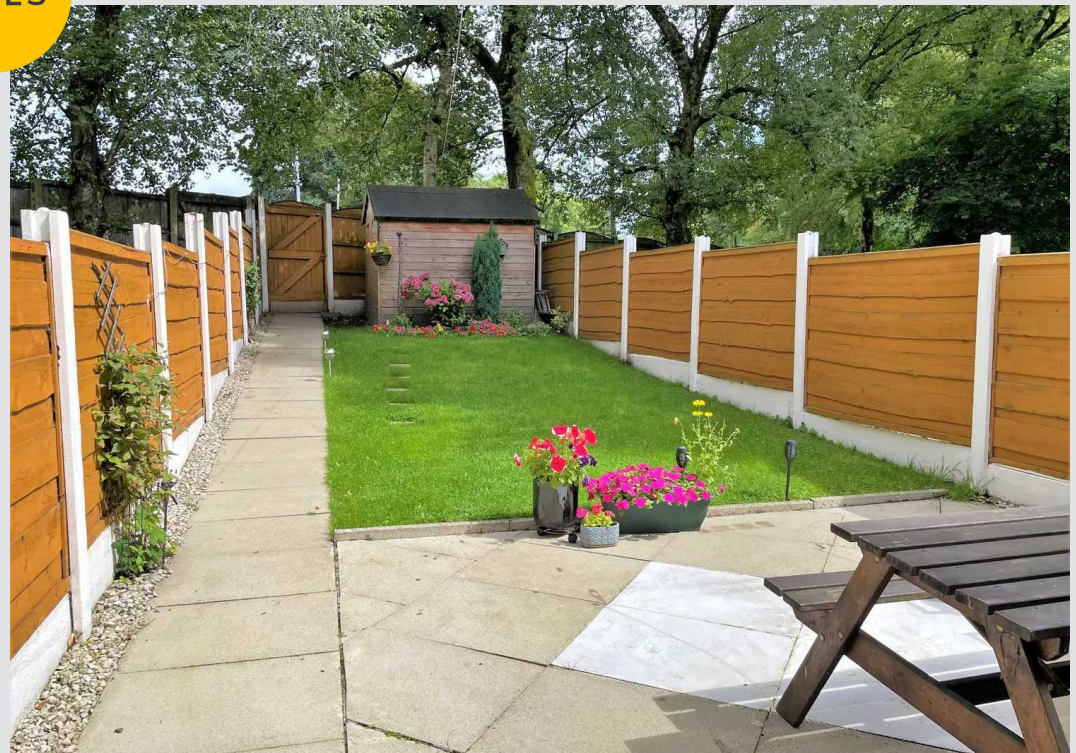




HILLS



HILLS



You can include any text here. The text can be modified upon generating your brochure.

