

RDY  
2GO



Plot 143

Four bedroom home at Anthem, Beverley

SERIES

# Concrete

Inspired by concrete and its muted grey palette, bringing a subtle industrial feel to your home. It's quietly confident. An understated yet bold choice.





# 1,447

Square foot home.

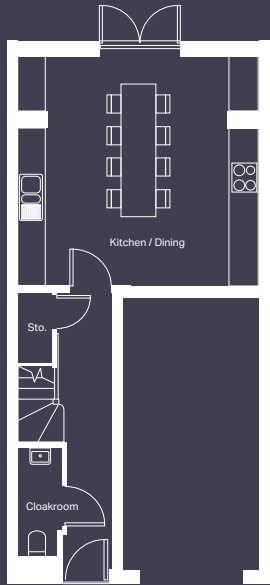
# 4 bedroom

Home over 3 floors.

# £9,875

Worth of interior designed upgrades.  
Including a turfed rear garden.

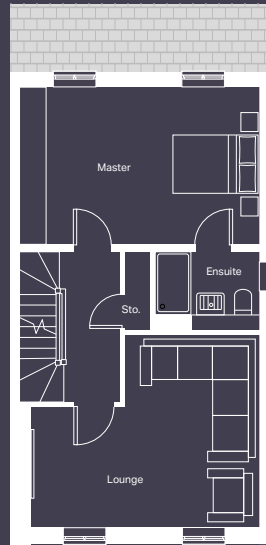




### Ground floor

Kitchen / Dining (max)  
5289mm x 5000mm

Cloakroom (max)  
990mm x 2400mm

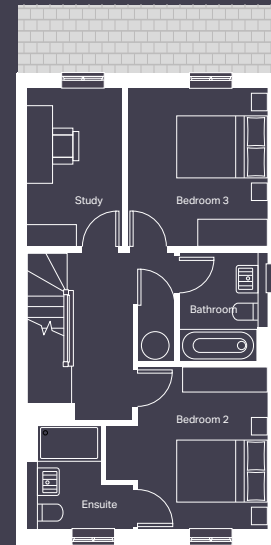


### First floor

Lounge (max)  
5000mm x 4243mm

Master Bedroom  
5289mm x 3485mm

Ensuite (max)  
2265mm x 1485mm



### Second floor

Bedroom 2 (max)  
3403mm x 3578mm

Ensuite (max)  
2375mm x 2338mm

Bedroom 3 (max)  
3091mm x 3484mm

Study  
2100mm x 3484mm

Bathroom (max)  
1700mm x 2370mm

CONCRETE

# Specification

## FLOORING

Hallway Tiles Madagascar Natural, Lounge, Stairs, Landing, Bed 1, Bed 2, Bed 3 and Bed 4 Decor Twist 50 Carpet

## KITCHEN WORKTOP

Raganza Granite Grey

## KITCHEN DOOR

Concrete Pearl Grey

## KITCHEN FLOOR TILE

Madagascar Natural

## WC FLOOR AND WALL TILE

Ferroker Niquel Floor and Park Gris Wall Tile

## BATHROOM FLOOR AND WALL TILE

Ferroker Niquel Floor and Park Gris Wall Tile

## EN-SUITE 1 FLOOR AND WALL TILE

Ferroker Niquel Floor and Park Gris Wall Tile

## EN-SUITE 2 FLOOR AND WALL TILE

Ferroker Niquel Floor and Park Gris Wall Tile

## WARDROBE

Bed 1 Cashmere Frame and Panel

## PLUMBING UPGRADE

Shower Over Bath, Small Towel Warmer to En-Suite and Large Towel Warmer to Bathroom

## ELECTRICAL UPGRADE

16x Polished Chrome Downlights

## OTHER UPGRADES

Turf to Rear Garden







# We're ready, are you?

Reserve now

