



Andrew Pearce
PINNER

WENTWORTH DRIVE, PINNER, MIDDLESEX HA5 2PX



Superbly Presented Three-Bedroom Home Near Coteford School – No upward Chain.

This delightful three-bedroom home offers versatile interiors and an idyllic setting, making it an excellent choice for families seeking peaceful and private living. Situated close to all amenities and the sought-after Coteford School, this residence boasts the following features:

Spacious Entrance Hallway: Welcoming and well-lit, the entrance hallway sets the tone for the rest of the home.

Open Plan Living Area: The large open plan living area seamlessly connects to a fabulous high-specification kitchen, creating a perfect space for family gatherings and entertaining.

Downstairs Cloakroom: Conveniently located on the ground floor, the cloakroom provides practicality and ease.

Family Bathroom Suite: Upstairs, you'll find a very well-presented family bathroom suite, catering to your daily needs.

Two Double Bedrooms with Storage: Ample storage and comfortable living spaces await on the first floor.

Third Bedroom with En-Suite Shower Room: The top floor hosts a third bedroom complete with a superb en-suite shower room.

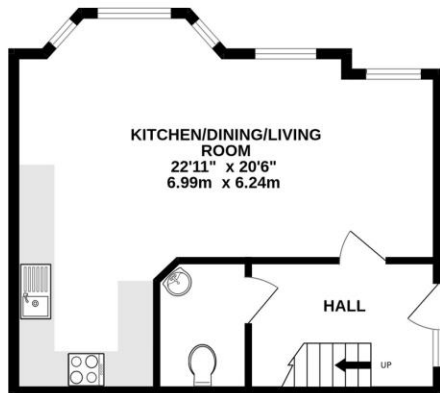
South-Facing Rear Garden: Enjoy outdoor moments in the sun-drenched rear garden.

Allocated Parking Space: One parking space on the driveway ensures convenience.

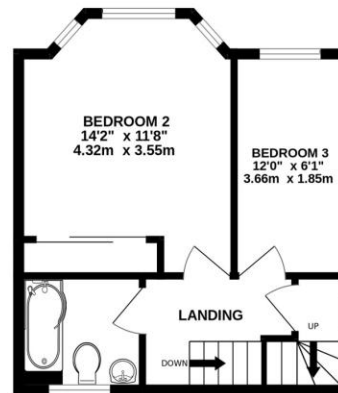
Wentworth Drive, a superbly located road, resides in a highly desirable area near Coteford School. Local shops and excellent transport links, including Northwood Hills station, are just a short stroll away.



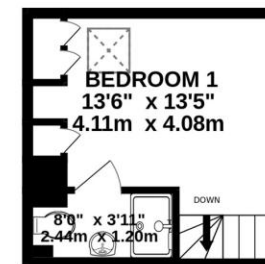
GROUND FLOOR
431 sq.ft. (40.0 sq.m.) approx.



1ST FLOOR
335 sq.ft. (31.2 sq.m.) approx.



2ND FLOOR
175 sq.ft. (16.3 sq.m.) approx.



TOTAL FLOOR AREA : 941 sq.ft. (87.4 sq.m.) approx.

Whilst every attempt has been made to ensure the accuracy of the floorplan contained here, measurements of doors, windows, rooms and any other items are approximate and no responsibility is taken for any error, omission or mis-statement. This plan is for illustrative purposes only and should be used as such by any prospective purchaser. The services, systems and appliances shown have not been tested and no guarantee as to their operability or efficiency can be given.
Made with Metropix ©2024



