



Russell Street, Eccles

Manchester



In Excess of £425,000

Russell Street

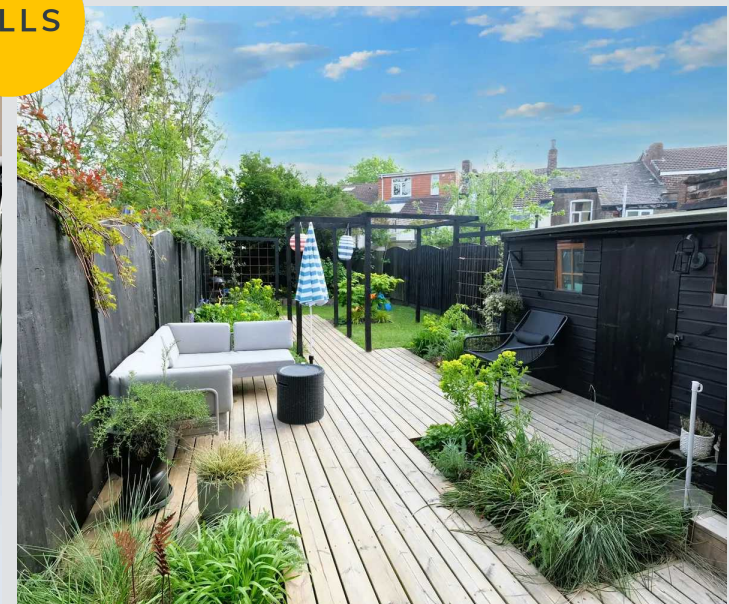
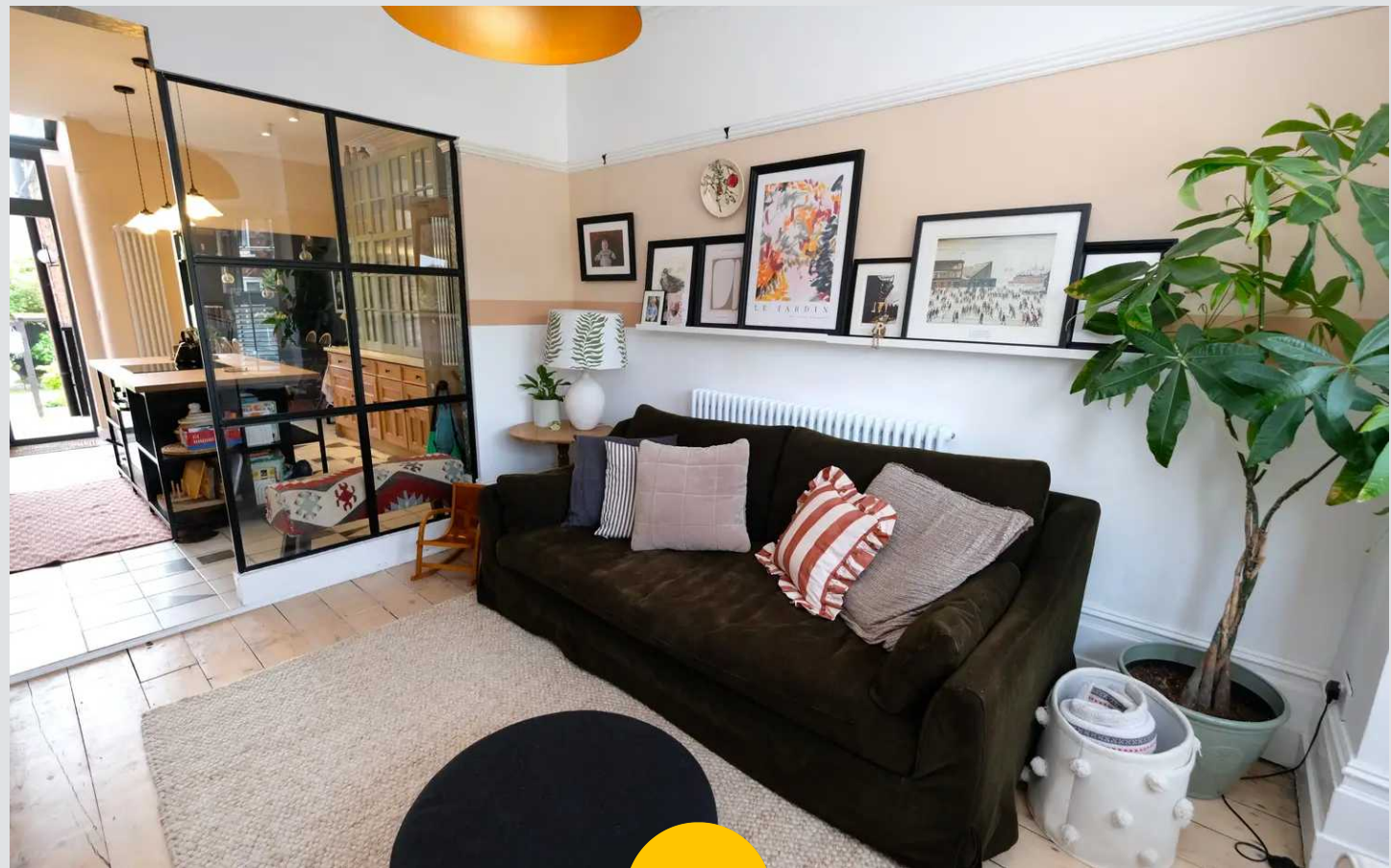
Eccles, Manchester

Stunning period property with original features and modern design, open plan layout, bay-fronted lounge, solid wood kitchen, spacious bedrooms, cellar with shower room & kitchenette, off-road parking, and beautiful rear garden. Close to amenities, schools, and transport links.

Council Tax band: B

Tenure: Freehold

- Stunning Four Bedroom Period Property Laid over Three Floors
- Boasting Original Features Throughout with a Beautiful Modern Twist
- Bay Fronted Lounge with Multi Fuel Log Burner & a Second Reception Room with Unique Floor to Ceiling Windows & Built in Storage
- Light & Airy Fitted Kitchen with bespoke Central Island and Larder Cupboards
- Three Spacious Doubles & a Generous Single Bedroom
- Modern Family Bathroom with His & Hers Sinks
- Self-Contained, Converted Cellar with Shower Room, Kitchenette and Ample Built-in Storage. Option for Basement to be Used As Self Contained Apartment.
- Off Road Parking for Multiple cars to the Front
- Beautifully presented Garden to the Rear, Including Shed with power sockets and lighting.
- Excellently Located Close to Amenities, Schools & Fantastic Transport Links



HILLS

Entrance Hallway

A welcoming entrance hallway complete with tiled flooring.

Reception Room One

14' 6" x 11' 7" (4.43m x 3.52m)

A bright lounge featuring a log burner. Complete with a ceiling light point, double glazed bay window and column radiator. Fitted with original wood flooring and shutters.

Dining Room

8' 11" x 13' 8" (2.72m x 4.17m)

Complete with ceiling spotlights, two double glazed windows and vertical column radiator. Fitted with tiled flooring.

Kitchen

13' 9" x 11' 7" (4.20m x 3.54m)

A spacious kitchen featuring complementary wall, base and larder units with integral cooker, hob and dishwasher. Space for a fridge freezer. Complete with a ceiling light point, double glazed patio doors and tiled flooring.

Shower Room

3' 3" x 8' 0" (0.98m x 2.43m)

Featuring a shower, hand wash basin and W.C. Fitted with tiled flooring.

Landing

Complete with a ceiling light point and drop ladder access to fully boarded loft.

Bedroom One

15' 7" x 11' 10" (4.75m x 3.61m)

Complete with a ceiling light point, two double glazed windows and wall mounted radiator. Fitted with original wooden flooring and built in storage cupboard.



Bedroom Two

13' 6" x 10' 2" (4.11m x 3.09m)

Complete with a ceiling light point, double glazed window and wall mounted column radiator. Fitted with original wooden flooring and built in storage cupboard.

Bedroom Three

7' 1" x 9' 0" (2.16m x 2.75m)

Complete with a ceiling light point, double glazed window and wall mounted column radiator. Fitted with carpet flooring.

Bathroom

6' 6" x 6' 2" (1.99m x 1.88m)

Featuring a three-piece suite including bath with shower over, his and hers sink and W.C. Complete with a ceiling light point, double glazed window, tiled walls and flooring.

Cellar Reception Room

11' 3" x 13' 9" (3.44m x 4.20m)

Complete with ceiling spotlights, wall mounted radiator, built in storage, extensive coat storage with hidden slide door and laminate flooring.

Cellar Utility Room

7' 10" x 13' 1" (2.39m x 3.98m)

Complete with complementary wall and base units with washer, cooker and hob. Complete with ceiling spotlights, wall mounted radiator and lino flooring.

Cellar Bedroom

11' 2" x 13' 9" (3.41m x 4.20m)

Featuring built in storage. Complete with ceiling spotlights, double glazed window and carpet flooring.

External

To the rear of the property is a well maintained, professionally landscaped garden with decked seating area, shed with power sockets and lighting fitted, outside tap, and extra storage underneath the raised deck and lawn.

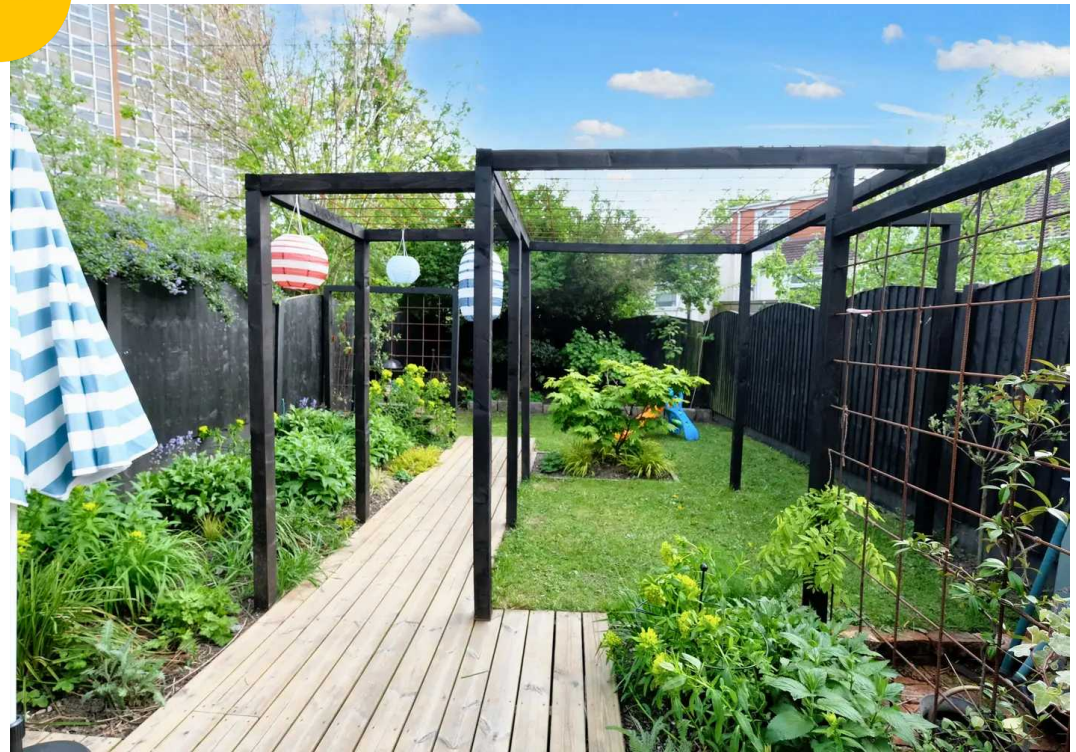
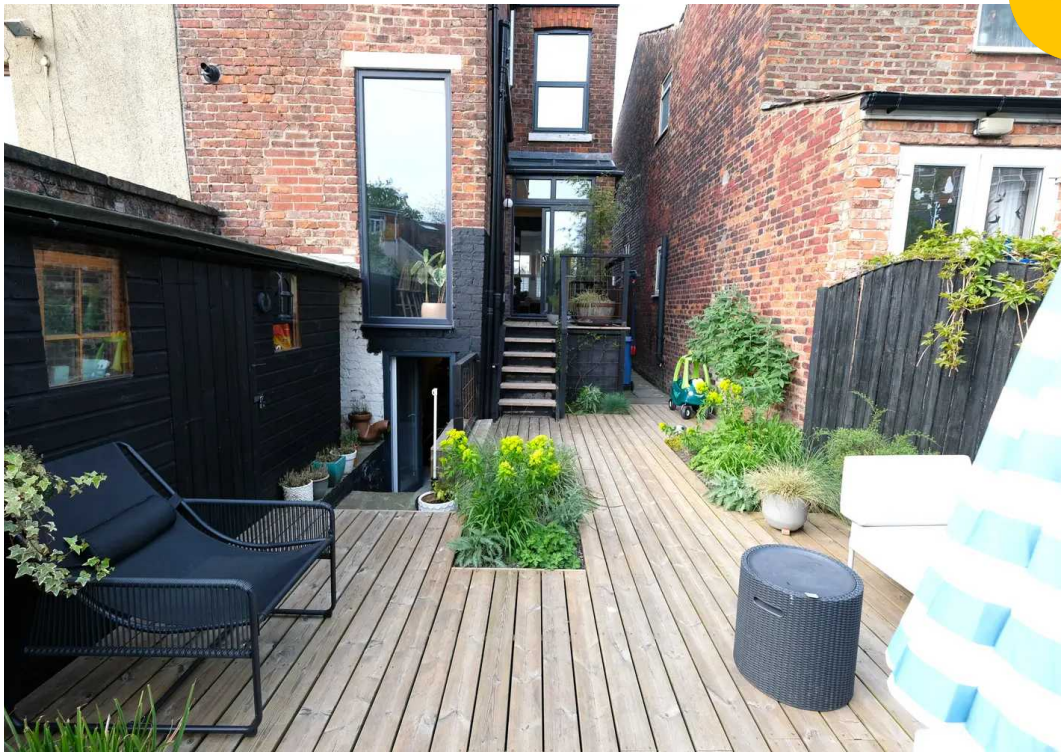


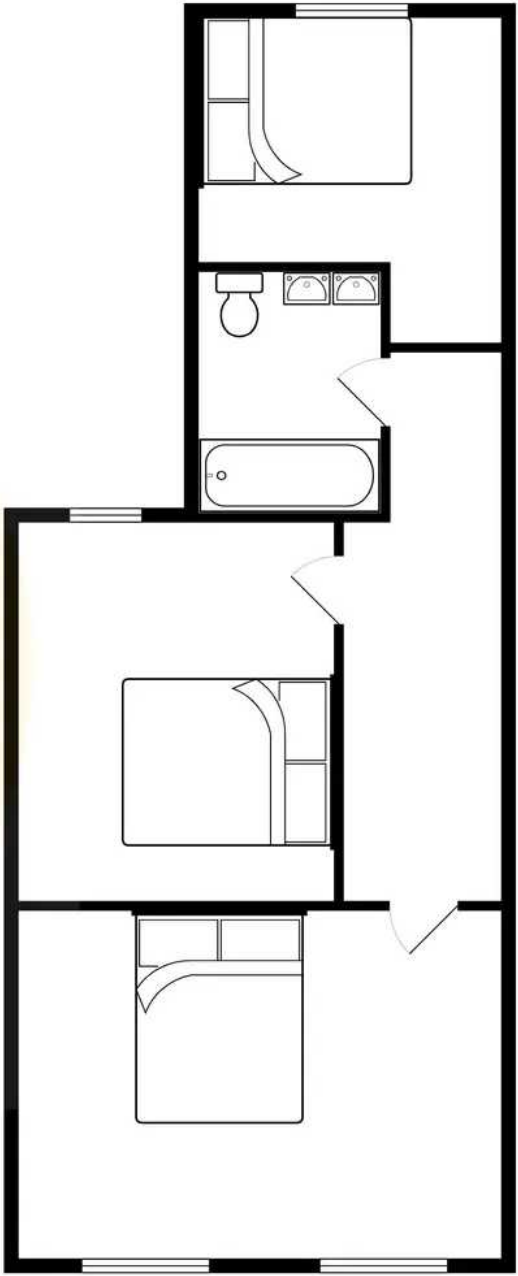
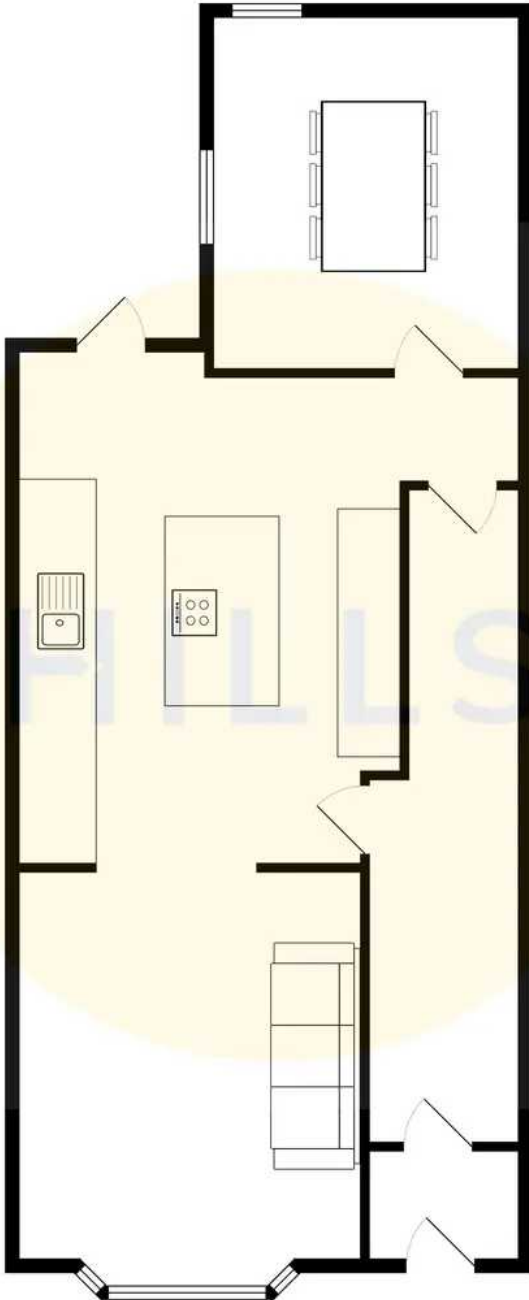
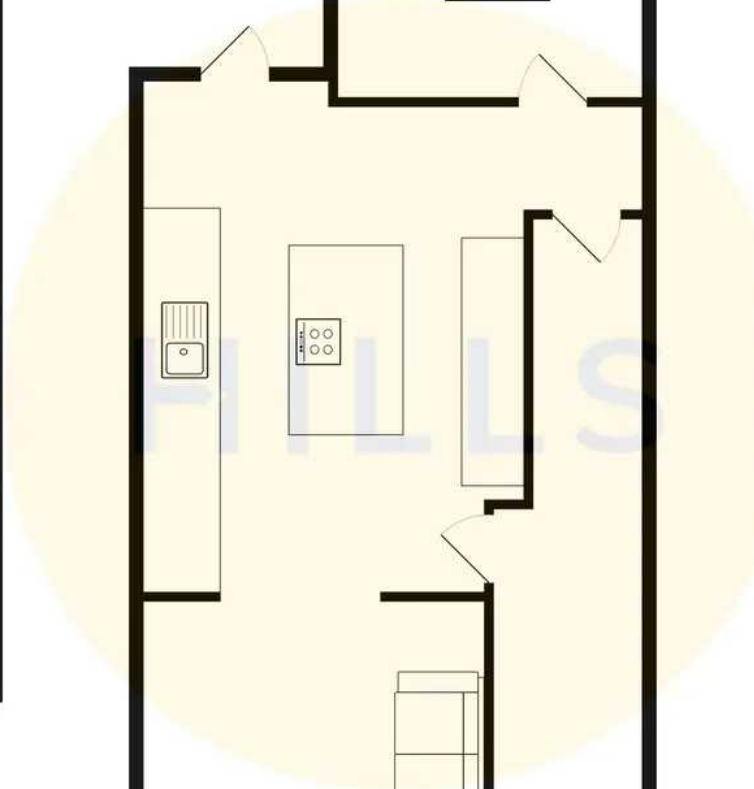
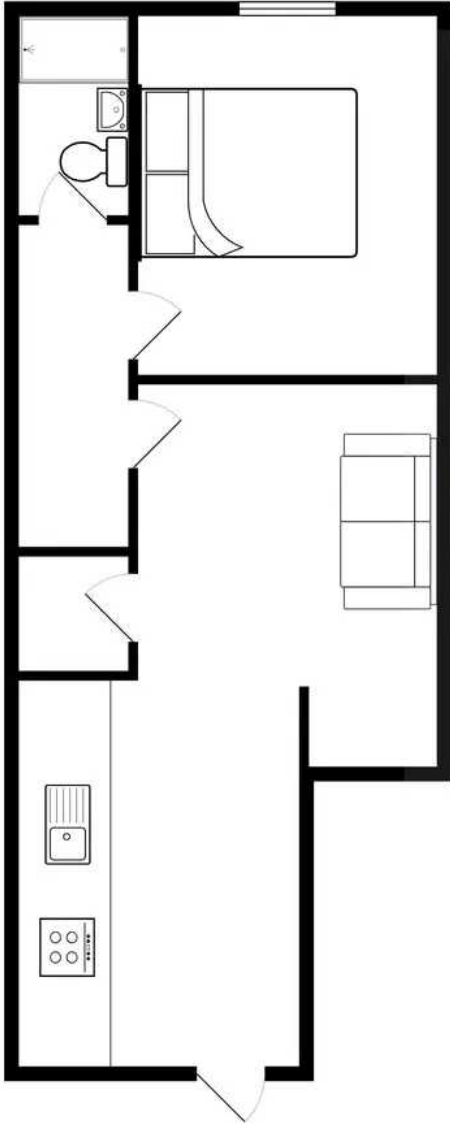


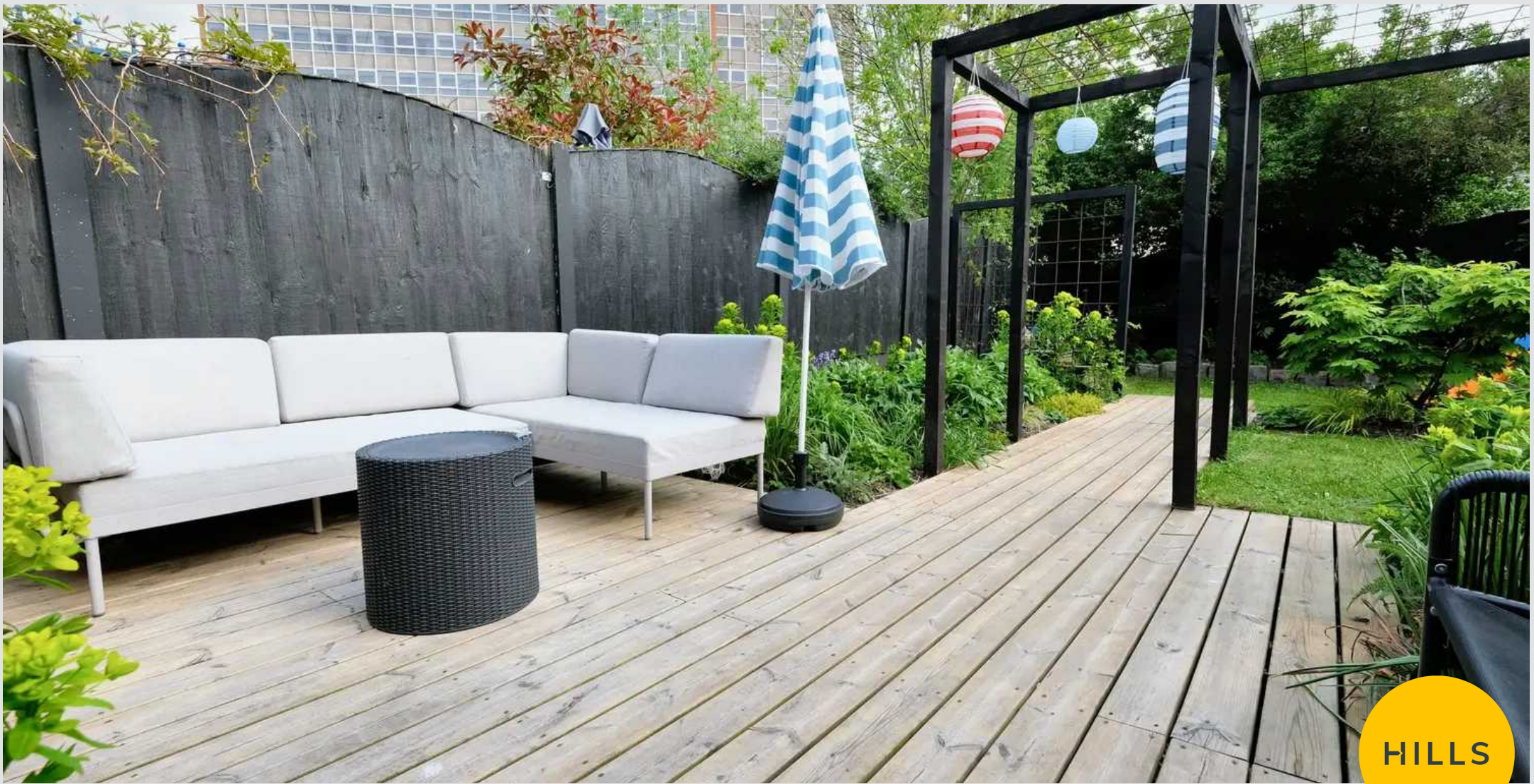
HILLS



HILLS







Hills | Salfords Estate Agent

Hills Residential, Sentinel House Albert Street – M30 0SS

0161 707 4900

sales@hills.agency

www.hills.agency/



THE PROPERTY MISDESCRIPTIONS ACT 1991 The Agent has not tested any apparatus, equipment, fixtures and fittings or services and so cannot verify that they are in working order or fit for the purpose. A Buyer is advised to obtain verification from their Solicitor or Surveyor. References to the Tenure of a Property are based on information supplied by the Seller. The Agent has not had sight of the title documents. A Buyer is advised to obtain verification from their Solicitor. You are advised to check the availability of this property before travelling any distance to view. Every effort and precaution has been made to ensure these particulars are correct and not misleading but their accuracy is not guaranteed nor do they form part of any contract. If there is any point which is of particular importance to you, please contact us and we will provide any information you require. This is advisable, particularly if you intend to travel some distance to view the property. The mention of any appliances and services within these details does not imply that they are in full and efficient working order. These particulars are in draft form awaiting Vendors confirmation of their accuracy. These details must therefore be taken as a guide only.