



# Persona Homes

by Home Group

## LONGRIDGE FARM

Bedlington

### Ingleton

*Ready to take your first step onto the property ladder? Discover the Ingleton!*

This lovely 3-bedroom home has a bright and airy kitchen/dining room and a cosy separate living room for when you need a break from the hustle and bustle of a busy household. It also has the added bonus of a handy utility room and cloakroom. Add to this 3 bedrooms, an en-suite and a family bathroom - there's plenty of room for the whole family. To complete the home, we've included driveway parking for 2 cars.



#### Contact us:

T: 0800 030 8888

E: [contactus@yourpersonahome.com](mailto:contactus@yourpersonahome.com)

W: [yourpersonahome.com](http://yourpersonahome.com)

Choppington Road, Bedlington, NE22 6LA



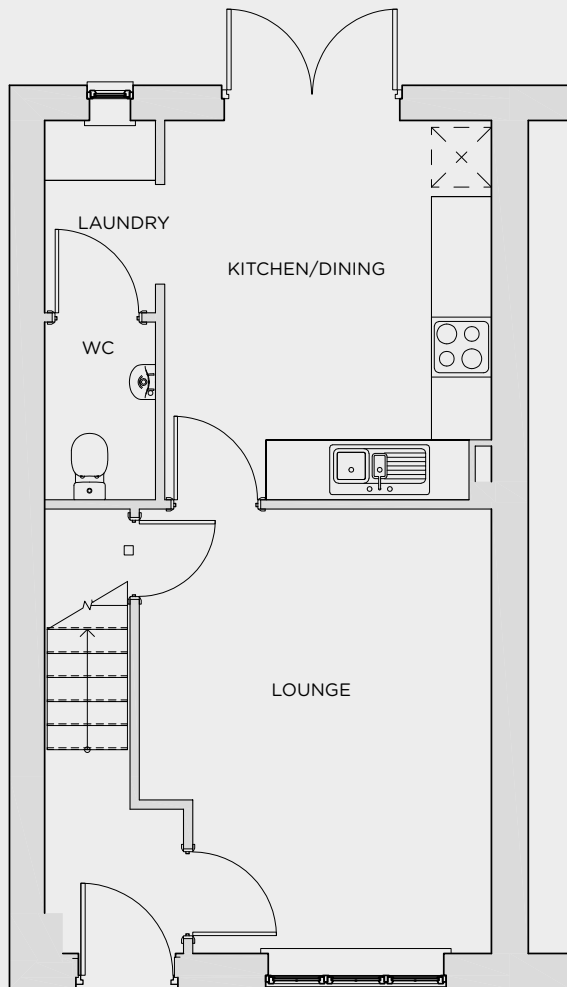
## Ground floor

Lounge 3.53m x 4.45m

Kitchen/dining 3.27m x 3.80m

Laundry 1.11m x 1.92m

WC 1.11m x 1.78m



Ground floor

## First floor

Main bedroom 2.98m x 3.24m

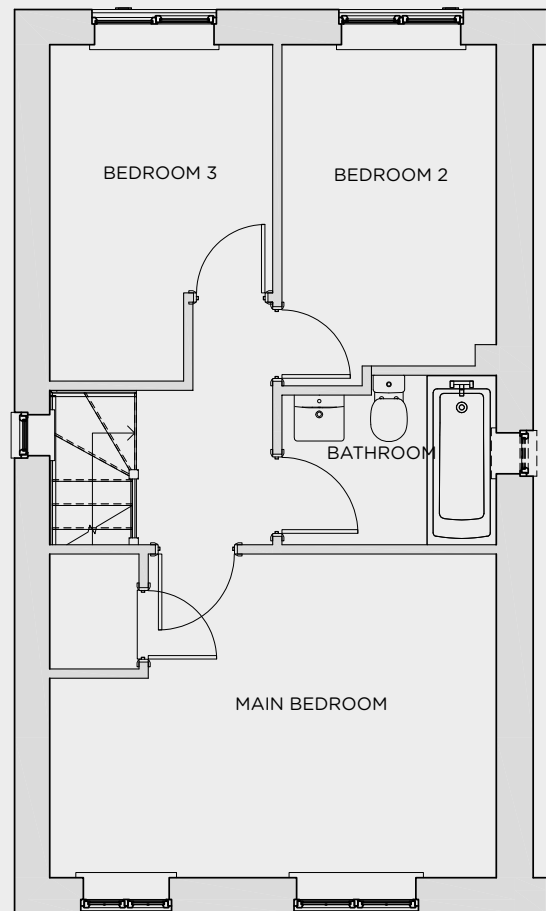
En-suite 1.18m x 1.99m

Bedroom 2 2.37m x 3.22m

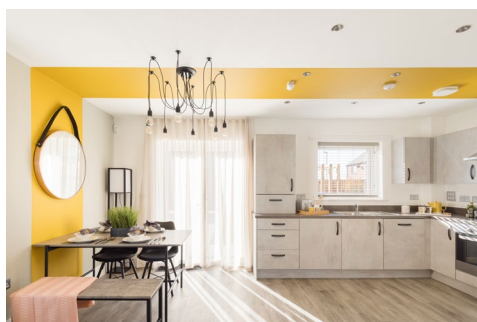
Bedroom 3 2.00m x 2.14m

Bathroom 2.37m x 1.70m

Total Area 74.88m<sup>2</sup>



First floor



Any floor plans are a general outline of the layout of the property for guidance only. All measurements are approximate and may vary and any intending purchasers should not rely on them as statements of fact or representations of fact but must satisfy themselves by inspection or otherwise as to their accuracy. Dimensions shown are not intended to be relied upon for installation of appliances or items of furniture or otherwise. CGI's and images are for illustrative purposes only. Specifications are subject to change. Images are indicative only and may be of previous developments.\*Journey times and distances taken from google.com/ maps and are correct before going to print. All times and distances listed are approximate and may vary depending on time of travel.