



WINDSOR COURT, VICARAGE CRESCENT, LONDON, SW11



WINDSOR COURT, VICARAGE CRESCENT, LONDON, SW11

A two bedroom duplex apartment near the river set in a small gated complex with parking.

Once through the gates to this delightful private development, this apartment has an allocated parking space just metres from its door. The living area is open plan with great entertaining space and large windows enjoying 180 degree views onto a neighbourhood park and tennis court. The property is offered to the market with the benefit of share of freehold.

Windsor Court is a peaceful enclave on Vicarage Crescent, moments from the shops and restaurants of Battersea Square and the Thames River path. Battersea Bridge offers access over the Thames and to Kings Road, Chelsea.

Entrance Hall · Reception room with Open plan Dining area/Kitchen · 2 Double bedrooms · Bathroom · Separate Cloakroom · Garden · Private parking · EPC Rating D

TERMS

Tenure: Leasehold with 987 years remaining, plus a share of freehold

Service Charge: Approximately £1,576.50 per annum, for the period ending 31 March 2024

Local Authority: The Royal Borough of Wandsworth

Price: £1,130,000 Subject to Contract

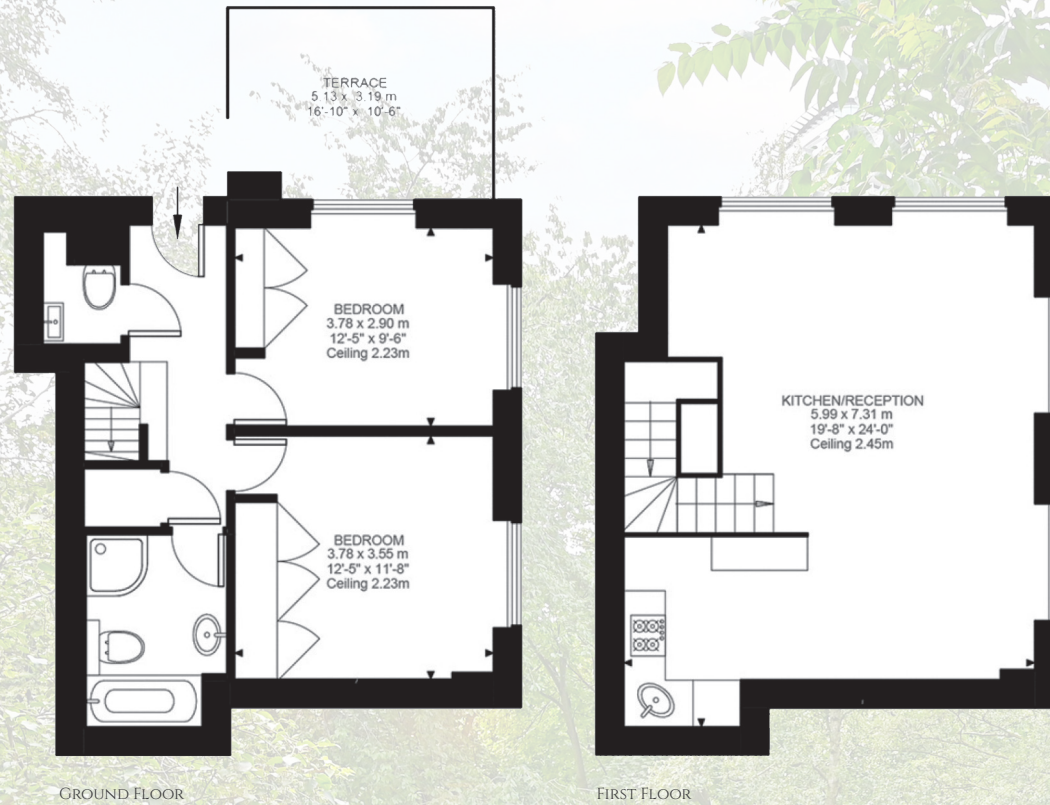




GROSS INTERNAL AREA

893 sq ft (82.95 sq m)

For identification purposes only.



Rose & Partners

PROPERTY SPECIALISTS

020 3838 8366

srose@roseandpartners.co.uk
roseandpartners.co.uk

MICHELIN HOUSE, 81 FULHAM RD, LONDON SW3 6RD

R&P Disclaimer

Important Notice: This brochure, the descriptions and measurements herein do not constitute representation and whilst every effort has been made to ensure accuracy, this cannot be guaranteed, nor do they form part of any contract. Please note that we have not carried out a detailed survey nor tested the services, appliances or any specific fittings.