



# KINGSTON HOUSE SOUTH

KNIGHTSBRIDGE SW7

A BEAUTIFULLY PRESENTED TWO BEDROOM APARTMENT ON THE FOURTH FLOOR OF THIS MODERN 24 HOUR PORTERED BUILDING.

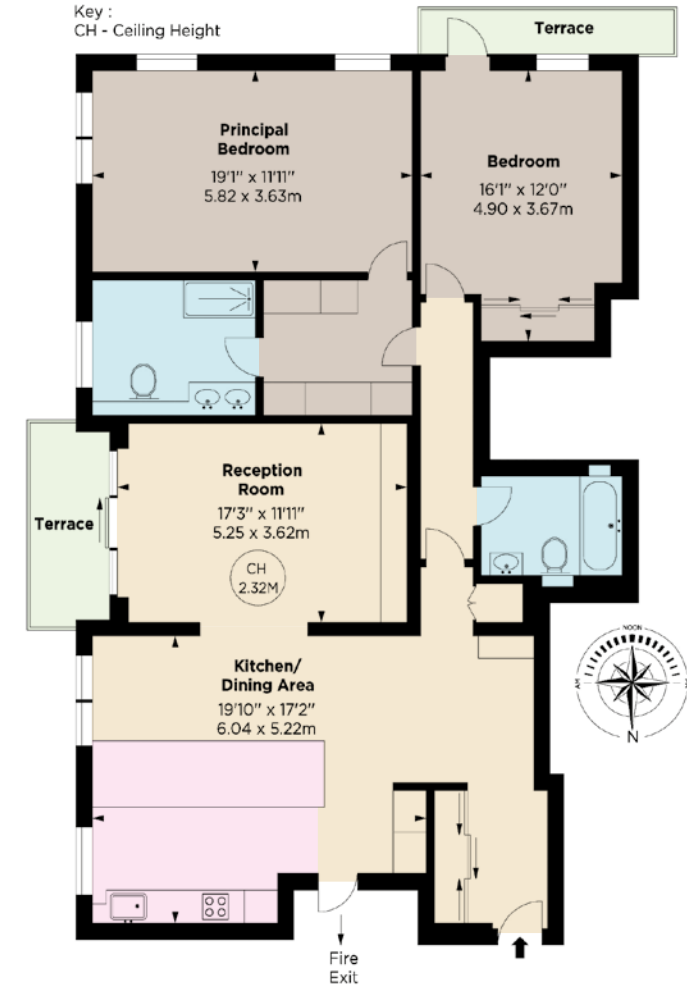


The property benefits from generous open-plan living, a well fitted kitchen/ breakfast room with additional dining area, and far reaching views over the Russian Orthodox Cathedral in Ennismore Gardens. The spacious accommodation has a dual aspect and an abundance of natural light.

Kingston House South is located within the prestigious Knightsbridge address of Ennismore Gardens. The building sits in between the green expanse of Hyde Park and the international shops and amenities of Knightsbridge and Sloane Street.

**FEATURES**

- Principal Bedroom with Ensuite Bathroom & Walk-In Wardrobe
- Double Bedroom
- Bathroom ■ Reception Room
- Kitchen/Dining Room
- Terrace ■ Lift
- 24 Hour Portage

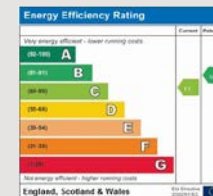


**FOURTH FLOOR**  
APPROX. GROSS INTERNAL AREA - 1,380 Sq ft - 128.20 sq m



**PRICE** £3,500,000  
**TENURE** SHARE OF FREEHOLD WITH 116 YEARS REMAINING  
**SERVICE CHARGE** APPROX £18,760 PER ANNUM

These details have been prepared for general guidance only and should not be relied upon by prospective purchaser/ tenants who before proceeding must check and otherwise satisfy themselves as to the property and the nature, state and availability of any facility or service.



**NVP**  
NICOLAS VAN PATRICK

6-8 MONTEPIER STREET,  
LONDON SW7 1EZ  
SALES | +44 (0)20 7581 8277  
LETTINGS | +44 (0)20 7590 1200  
info@nicolasvanpatrick.com  
www.nicolasvanpatrick.com