



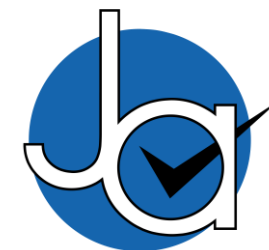
**4 bedroom
Detached
Bungalow
located in
Churnwood
Road.**

Guide Price
£400,000 - £435,000

Find us on..



JOHN ALEXANDER
ESTATE AGENTS



JOHN ALEXANDER
ESTATE AGENTS

Churnwood Close Colchester CO4 3EU

FULL DESCRIPTION

GUIDE PRICE of £400,000 - £435,000

John Alexander are pleased to present to market, this four bedroom detached bungalow situated in the popular Parsons Heath district of Colchester to the North East of the City Centre. The property is perfectly located for local amenities, Primary and Secondary Schools and access to the A12/A120 interchange.

The property benefits include a lounge, conservatory, kitchen/breakfast room, four bedrooms, two bathrooms, enclosed rear garden, off road parking and a garage.

LIVING ROOM

21' 3" x 9' 10" (6.48m x 3m)

CONSERVATORY

12' 6" x 11' 9" (3.81m x 3.58m)

KITCHEN/BREAKFAST ROOM

20' 6" x 9' 10" (6.25m x 3m)

BEDROOM ONE

17' 1" x 15' 5" (5.21m x 4.7m)

ENSUITE

BEDROOM TWO

13' 8" x 10' 10" (4.17m x 3.3m)

BEDROOM THREE

9' 11" x 9' 9" (3.02m x 2.97m)

BEDROOM FOUR

9' 10" x 8' 10" (3m x 2.69m)

BATHROOM

OUTSIDE

The rear garden is enclosed by brick and panel fencing with a large patio area, shrub borders and mostly laid to lawn.

To the front of the property, there is parking for a number of vehicles and a single garage with electrically remote-operated roller shutter.



4



2



2



EPC







Life isn't about waiting
for the storm to pass
It's about learning to
Dance in the Rain



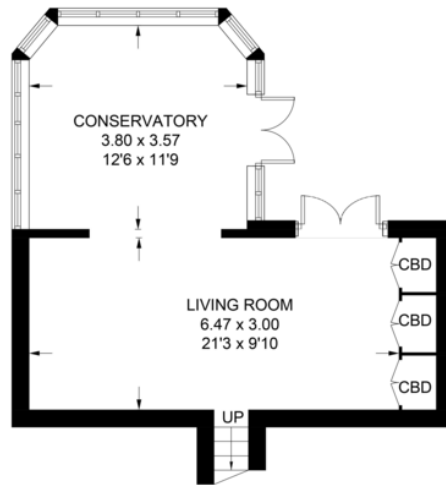
Churnwood Close, Colchester, CO4 3EU



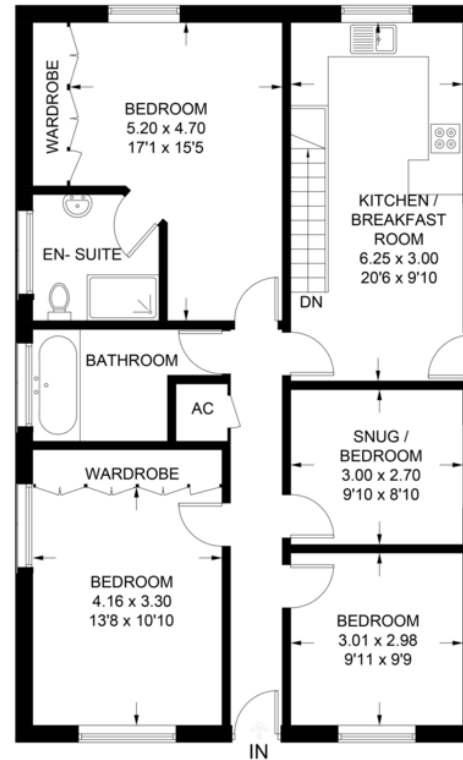
FLOORPLAN

Churnwood Close

Approximate Gross Internal Area = 128 sq m / 1377 sq ft



Lower Ground Floor
35.9 sq m / 386 sq ft



Ground Floor
92.1 sq m / 991 sq ft

Illustration for identification purposes only,
measurements are approximate, not to scale.

CONTACT

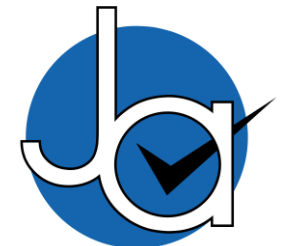
99 London Road
Stanway
Colchester
Essex
CO3 0NY

E sales@john-alexander.co.uk

T 01206 656007

www.john-alexander.co.uk

Find us on..



JOHN ALEXANDER
ESTATE AGENTS