

Coopers



Coopers

Coopers

Guphill Avenue, Whoberley, Coventry CV5 8BA

Price: £300,000



Coopers

Guphill Avenue

Whoberley, Coventry

Delightful detached bungalow with one bedroom ripe for redevelopment in a lovely location. Features large workshop, off-road parking, and easy access to local amenities, parks, and city centre. Ideal location for both urban convenience and peaceful surroundings. Council Tax band: D

Tenure: Freehold

EPC Energy Efficiency Rating: D

EPC Environmental Impact Rating:

- A completely unique bungalow, on a lovely plot
- One bedroom, but with huge potential for further development
- Large living room
- Open plan kitchen and dining room
- Modern shower room
- Useful loft space
- Huge detached workshop/outbuilding
- No chain



Coopers



Coopers

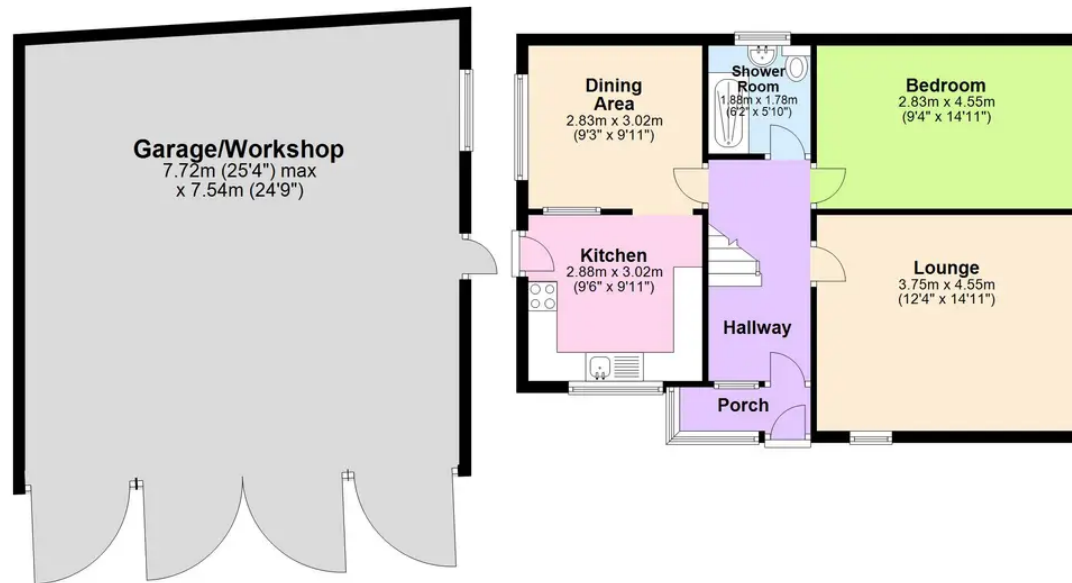


Coopers



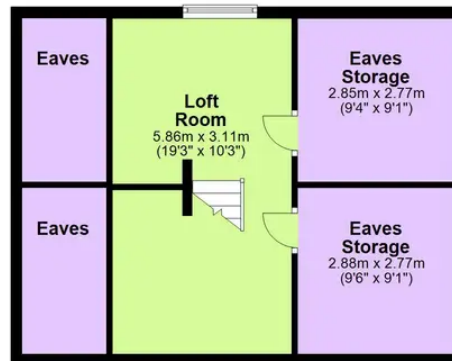
Ground Floor

Approx. 119.2 sq. metres (1283.5 sq. feet)



First Floor

Approx. 44.1 sq. metres (474.2 sq. feet)



Total area: approx. 163.3 sq. metres (1757.7 sq. feet)

This floor plan is for illustrative purposes only and should be used as such by any prospective purchaser. Whilst every attempt has been made to ensure the accuracy of this plan, measurements of doors, windows, rooms and other items are approximate and no responsibility is taken for any error, omission or mis-statement.
Plan produced using PlanUp.

Coopers Estate Agents

Coopers, 22 New Union Street - CV1 2HN

Coopers

Coopers Chartered Surveyors Ltd, 22 New Union Street, Coventry, West Midlands

CV1 2HN, 024 7655 2841, sales@coopers-cov.com. Company Registration

Number: 6725089 / VAT number: 940 3555 34

024 7655 2841 • sales@coopersestateagents.com • www.coopersestateagents.com/