

22 Vicarage Road

Coopersale, Epping

£825,000

Beautifully renovated throughout, full of clean lines, spacious rooms and lots of light. This four bedroom family home along one of Coopersale's most desirable roads, is sure to impress.

Council Tax band: E

Tenure: Freehold

- OFF ROAD PARKING
- FOUR BEDROOMS
- OPEN PLAN TO REAR
- VILLAGE LOCATION CLOSE TO SHOPS AND SCHOOL
- UTILITY ROOM
- STUDY/PLAYROOM
- DOWNSTAIRS WC
- EN-SUITE TO PRIMARY BEDROOM



Hall

Study/Play Room

11' 11" x 6' 11" (3.63m x 2.11m)

Living Room

22' 3" x 11' 10" (6.78m x 3.61m)

Kitchen/Dining Room

12' 11" x 25' 4" (3.94m x 7.72m)

WC

Utility

5' 4" x 6' 11" (1.62m x 2.11m)

Bedroom 1

17' 11" x 10' 4" (5.46m x 3.15m)

En-Suite to Primary Bedroom

Bedroom 2

12' 11" x 25' 4" (3.94m x 7.72m)

Bedroom 3

10' 5" x 11' 1" (3.18m x 3.37m)

Bedroom 4

7' 1" x 7' 0" (2.17m x 2.14m)

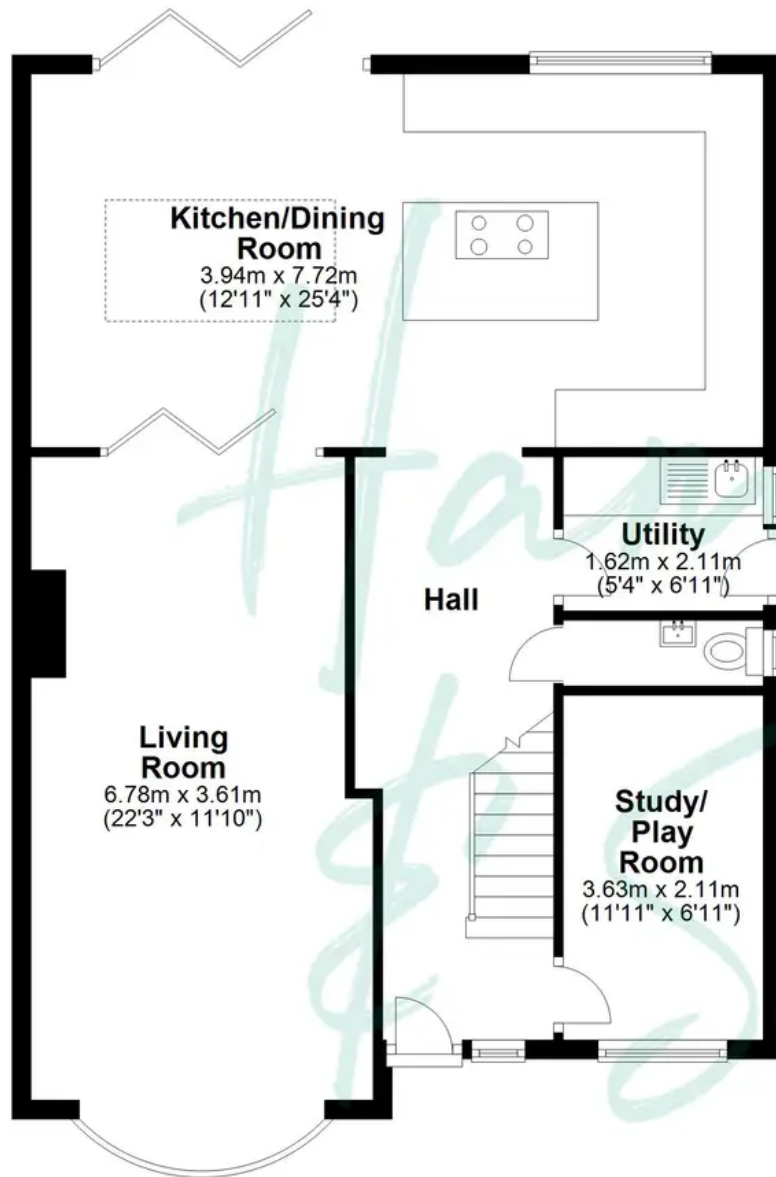
Bathroom and Separate Shower Room





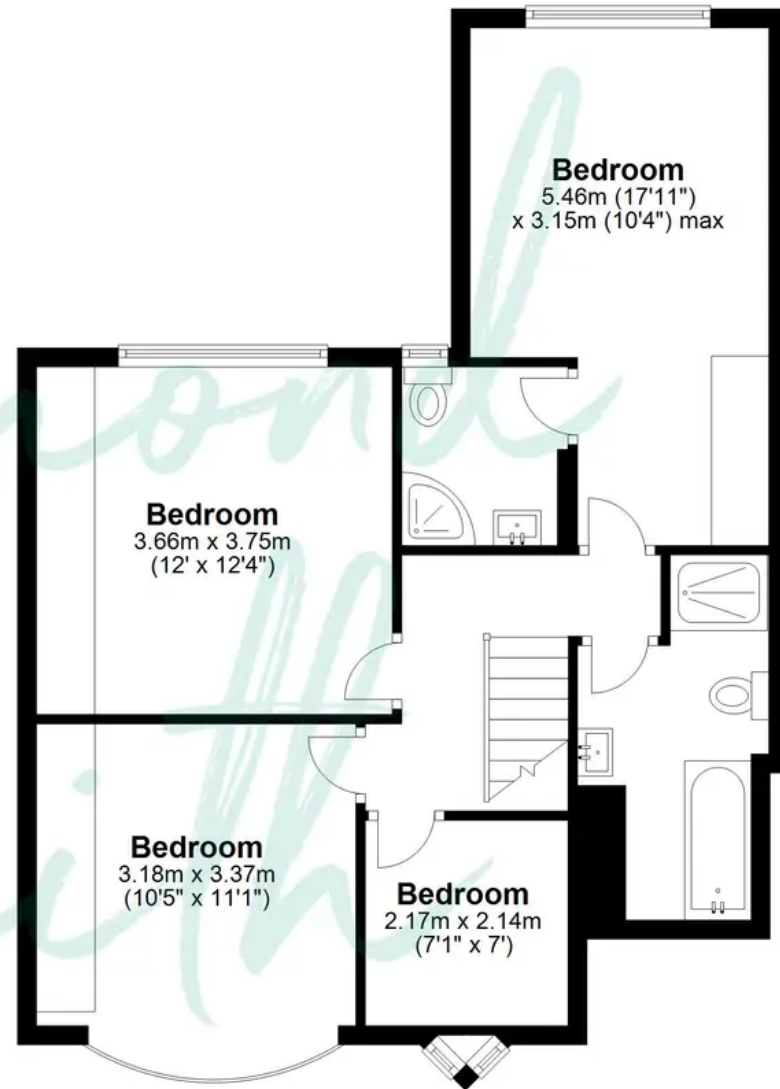
Ground Floor

Approx. 81.4 sq. metres (875.8 sq. feet)



First Floor

Approx. 62.7 sq. metres (674.8 sq. feet)



Total area: approx. 144.1 sq. metres (1550.6 sq. feet)

FOR ILLUSTRATIVE PURPOSES ONLY. NOT TO SCALE. Whilst every attempt had been made to ensure the accuracy of the floor plan shown, all measurements, positioning, fixtures, features, fittings and any other data shown are an approximate interpretation for illustrative purposes only and are not to scale. No responsibility is taken for any error, omission, miss-statement or use of data shown.