



Crescent Court Promenade, Blackpool

Offers Over **£100,000**

Crescent Court Promenade, Blackpool

Nestled along the picturesque promenade, this well-presented second-floor maisonette offers panoramic sea views and a tranquil coastal living experience. Upon entering, a welcoming entrance hall leads into a bright and spacious lounge, providing a perfect setting to relax and entertain while enjoying the maritime vistas. The property boasts a modern fitted kitchen, ideal for culinary enthusiasts, along with two comfortable bedrooms and a contemporary bathroom, ensuring both style and convenience. Additional features such as gas central heating and uPVC double glazing offer comfort and efficiency, while the property is further enhanced by a communal garden and a garage, providing outdoor space and storage solutions. With no onward chain, this charming residence presents a fantastic opportunity for those seeking a seaside retreat.

Council Tax band: B

Tenure: Leasehold

- Well Presented Second Floor Maisonette with Sea Views
- Entrance Hall, Lounge, Fitted Kitchen
- 2 Bedrooms, Bathroom
- Gas Central Heating, uPVC Double Glazing
- Communal Garden, Garage
- Situated on the promenade with uninterrupted sea views
- No onward chain
- Communal Gardens
- Single Garage





Hallway

Lounge

15' 3" x 16' 7" (4.66m x 5.05m)

Kitchen

11' 3" x 8' 0" (3.42m x 2.44m)

Landing

Bedroom 1

13' 7" x 16' 5" (4.14m x 5.00m)

Bedroom 2

10' 6" x 7' 11" (3.21m x 2.42m)

Bathroom

5' 5" x 8' 10" (1.66m x 2.68m)





Hallway

Lounge

15' 3" x 16' 7" (4.66m x 5.05m)

Kitchen

11' 3" x 8' 0" (3.42m x 2.44m)

Landing

Bedroom 1

13' 7" x 16' 5" (4.14m x 5.00m)

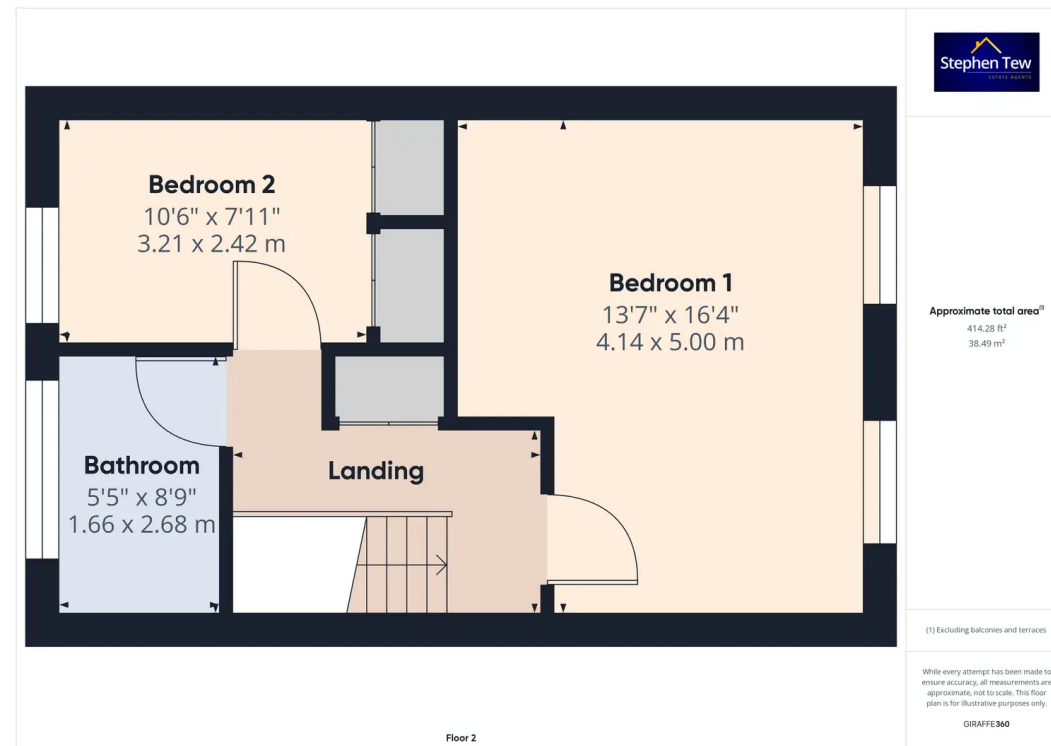
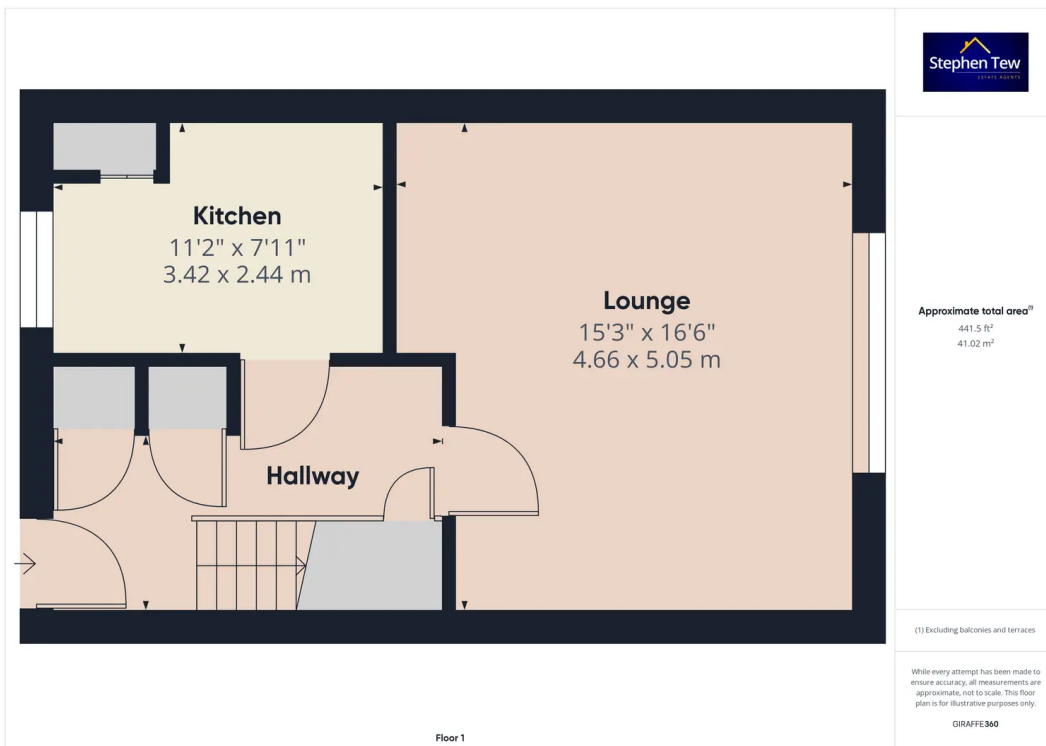
Bedroom 2

10' 6" x 7' 11" (3.21m x 2.42m)

Bathroom

5' 5" x 8' 10" (1.66m x 2.68m)







Stephen Tew Estate Agents

Stephen Tew Estate Agents, 132 Highfield Road - FY4 2HH

01253 401111

info@stephentew.co.uk

www.stephentew.co.uk

