



3 Bedroom Mid Terraced House £240,000

Beatrice Street, Swindon, Wiltshire, SN2 1BD

mcfarlane
property.com

3 Bedroom Mid Terraced House
Gorsehill, Swindon

- NO ONWARD CHAIN
 - THREE DOUBLE BEDROOMS
 - OFF ROAD PARKING
 - TWO RECEPTION ROOMS
 - GROUND FLOOR FAMILY BATHROOM
 - GARDEN WITH OUTBUILDING
 - VICTORIAN TERRACE
-



Property description

*****NO ONWARD CHAIN*****

This 3 DOUBLE bedroom mid terrace VICTORIAN family home with a living room, separate dining room, kitchen with UTILITY ROOM and bathroom to the ground floor.



Upstairs you will find the 3 double bedrooms. Outside the rear of the property benefits from OFF STREET PARKING accessible from the rear lane. The garden also has a large OUTBUILDING which has power and light.

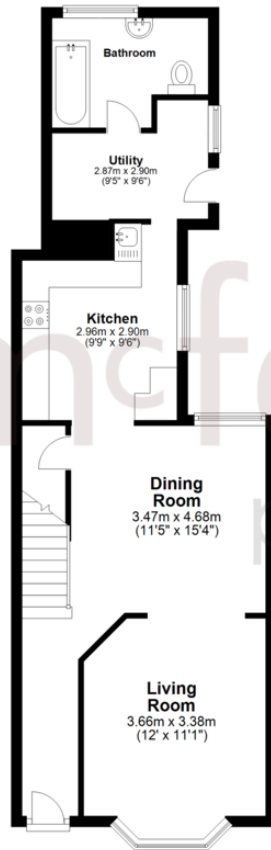


Situated in the ever popular GORSE HILL, and ideally located close to shops, schools and St Marks Recreation Park, we highly recommend an internal viewing to appreciate the space on offer.

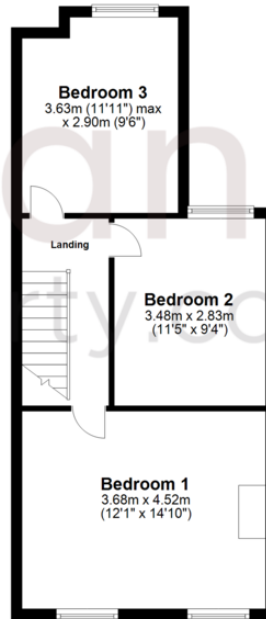


Council Tax Band B
Council Tax Estimate £1,710

Ground Floor
Approx. 54.6 sq. metres (588.2 sq. feet)



First Floor
Approx. 43.4 sq. metres (466.8 sq. feet)



Total area: approx. 98.0 sq. metres (1055.0 sq. feet)


We 
where you
LIVE

Our team are friendly, experienced and are all local. They know it better than they do their own living rooms and can help you find what you're looking for because **we love where we live.**

We would be delighted to show you around this property.

**Because every home
needs a personal touch.**

**If you would like to view this
property then please get in touch.**

 01793 296600

 swindon@mcfarlaneproperty.com

mcfarlaneproperty.com

mcfarlane
property.com

Cricklade.
102 High Street
Cricklade SN6 6AA
 01793 751044

Marlborough.
106 High Street
Marlborough SN8 1LT
 01672 514380

Old Town.
28-30 Wood Street
Swindon SN1 4AB
 01793 296880

Swindon.
The Village Centre,
Redhouse SN25 2FW
 01793 296600

Agents Note: Whilst every care has been taken to prepare these sales particulars, they are for guidance purposes only. All measurements are approximate are for general guidance purposes only and whilst every care has been taken to ensure their accuracy, they should not be relied upon and potential buyers are advised to recheck the measurements