



Riverview Road

Epsom

Guide Price £475,000 – £500,000

Riverview Road

Epsom

- Semi-detached bungalow
- Sought-after residential road
- Two double bedrooms
- Close to amenities and schools
- Beautiful garden
- Extended
- Potential to extend further
- No-chain

Nestled in a serene enclave, this charming 2-bedroom semi-detached bungalow on a sought-after residential road. Boasting a well-conceived layout, the property features two double bedrooms, making it ideal for a small family or those seeking a tranquil retreat. This bungalow is conveniently close to amenities and schools, ensuring utmost convenience for its residents. The beauty of this abode is accentuated by a beautifully landscaped garden that offers a peaceful sanctuary for relaxation and entertaining. This exquisite property has been extended, adding an extra layer of elegance and functionality to the home. With the added potential to extend further, this bungalow offers endless possibilities to create a personalised living space. Furthermore, the property is being offered with no onward chain, enabling a seamless transition for the discerning buyer seeking immediate occupancy.





63 Riverview Road

Epsom

Beyond the four walls of this enchanting bungalow lies a beautiful garden that serves as an oasis of tranquillity and natural beauty. This meticulously curated outdoor space is a perfect complement to the interior, providing a serene backdrop for al fresco dining, leisurely strolls, or simply unwinding amidst the lush greenery. Capturing the essence of idyllic living, the garden offers a harmonious blend of privacy and charm, creating an ambience that is both inviting and relaxing. Whether you seek a peaceful retreat to escape the hustle and bustle of the city or a vibrant setting for outdoor gatherings, this stunning garden is sure to exceed all expectations. With the potential to further enhance and customise this outdoor haven, the possibilities are endless for those with a vision to create their own slice of paradise right at their doorstep.

Council Tax band: D

Tenure: Freehold

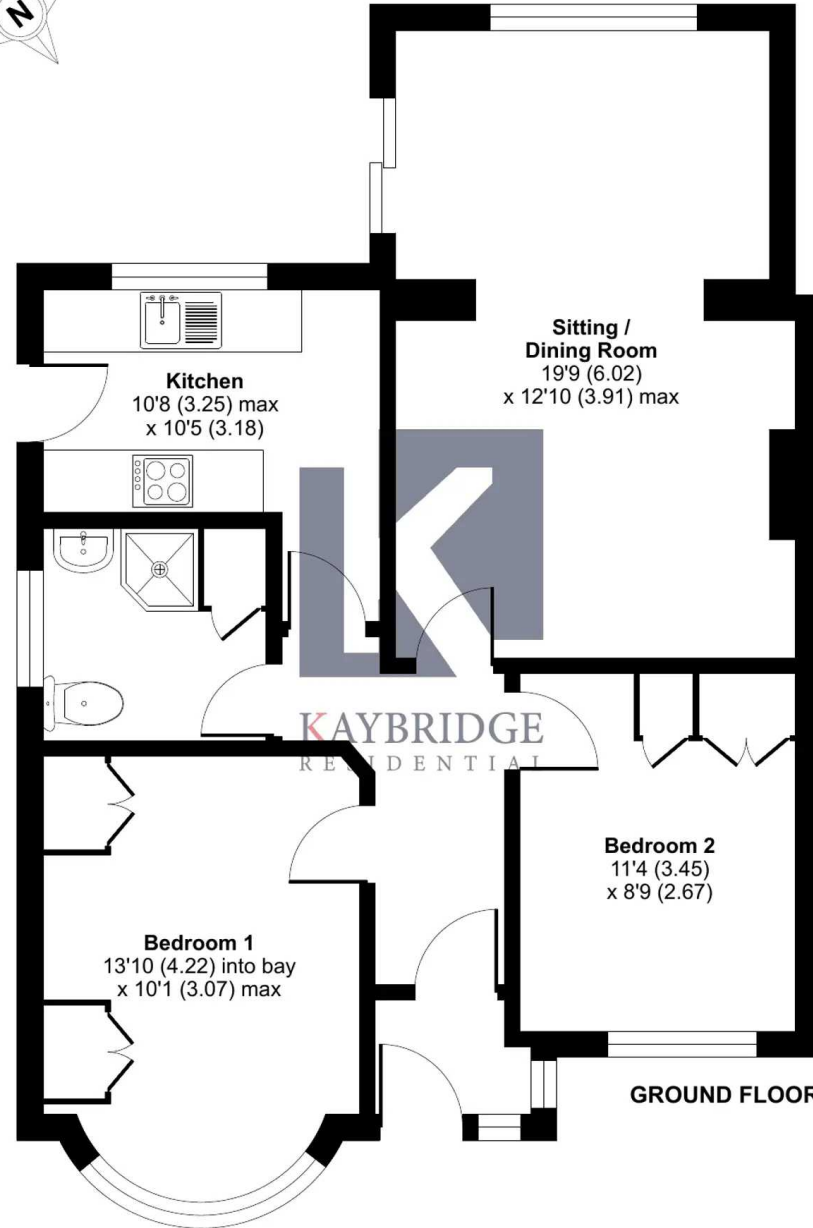




Riverview Road, Epsom, KT19

Approximate Area = 733 sq ft / 68 sq m

For identification only - Not to scale



Floor plan produced in accordance with RICS Property Measurement Standards incorporating International Property Measurement Standards (IPMS2 Residential). ©nlchecon 2024. Produced for Kaybridge Residential Ltd. REF: 1124256



Kaybridge Residential Epsom

Kaybridge Residential Estate Agents, 23 Stoneleigh Broadway - KT17 2JE

02080040474 • info@kbridge.co.uk • www.kaybridgeresidential.co.uk/