

Compton

*For Rent*  
**Chapter House, 16 Brunswick Place  
Old Street N1**



Stunning, Re-imagined former  
Victorian School with fully fitted  
floors available!

**For Rent**

Chapter House, 16 Brunswick Place  
Old Street N1

**Size**

1,338 - 24,912 Ft<sup>2</sup>

**Rent**

£39.50 - £65 per sq ft

**Fitout**

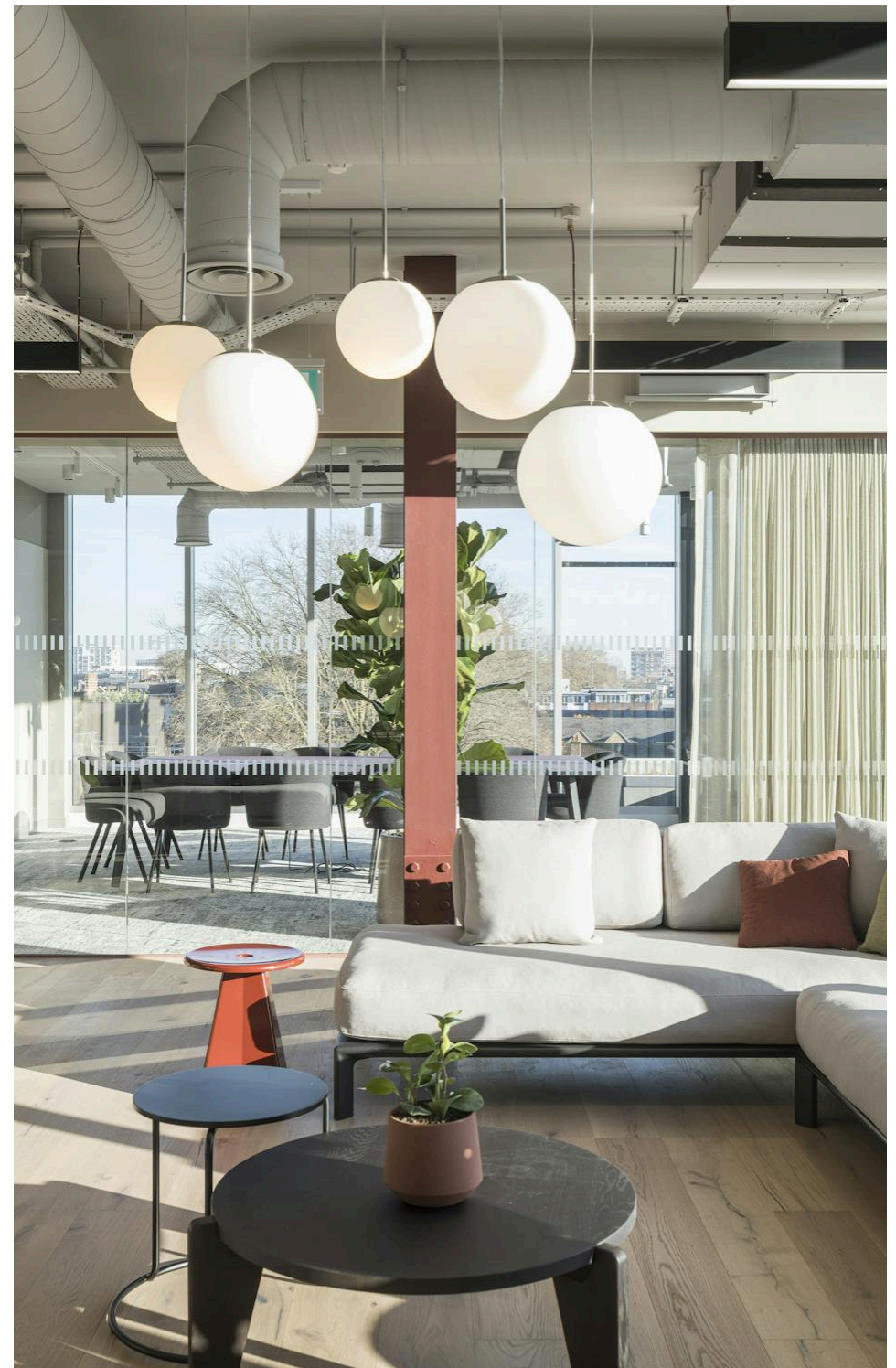
Fitted. 4th floors are fully fitted and furnished. Other floors can be fitted, subject to deal terms.

**Description**

A former Victorian school building, thoughtfully refurbished while retaining period features, providing modern open-plan floors with excellent natural light and generously sized terraces (3rd floor).

The floorplates have been recently refurbished and offer the option of fully fitted and furnished space or CAT A for Tenant's who want the freedom to configure the space according to their tailored requirements.

Compton





For Rent

Chapter House, 16 Brunswick Place  
Old Street N1

[Click to Play](#)





**For Rent**

Chapter House, 16 Brunswick Place  
Old Street N1

*4th Floor*

**Size**

1,338 - 24,912 Ft<sup>2</sup>

**Rent**

£39.50 - £65 per sq ft

**Fitout**

Fitted. 4th floors are fully fitted and furnished. Other floors can be fitted, subject to deal terms.



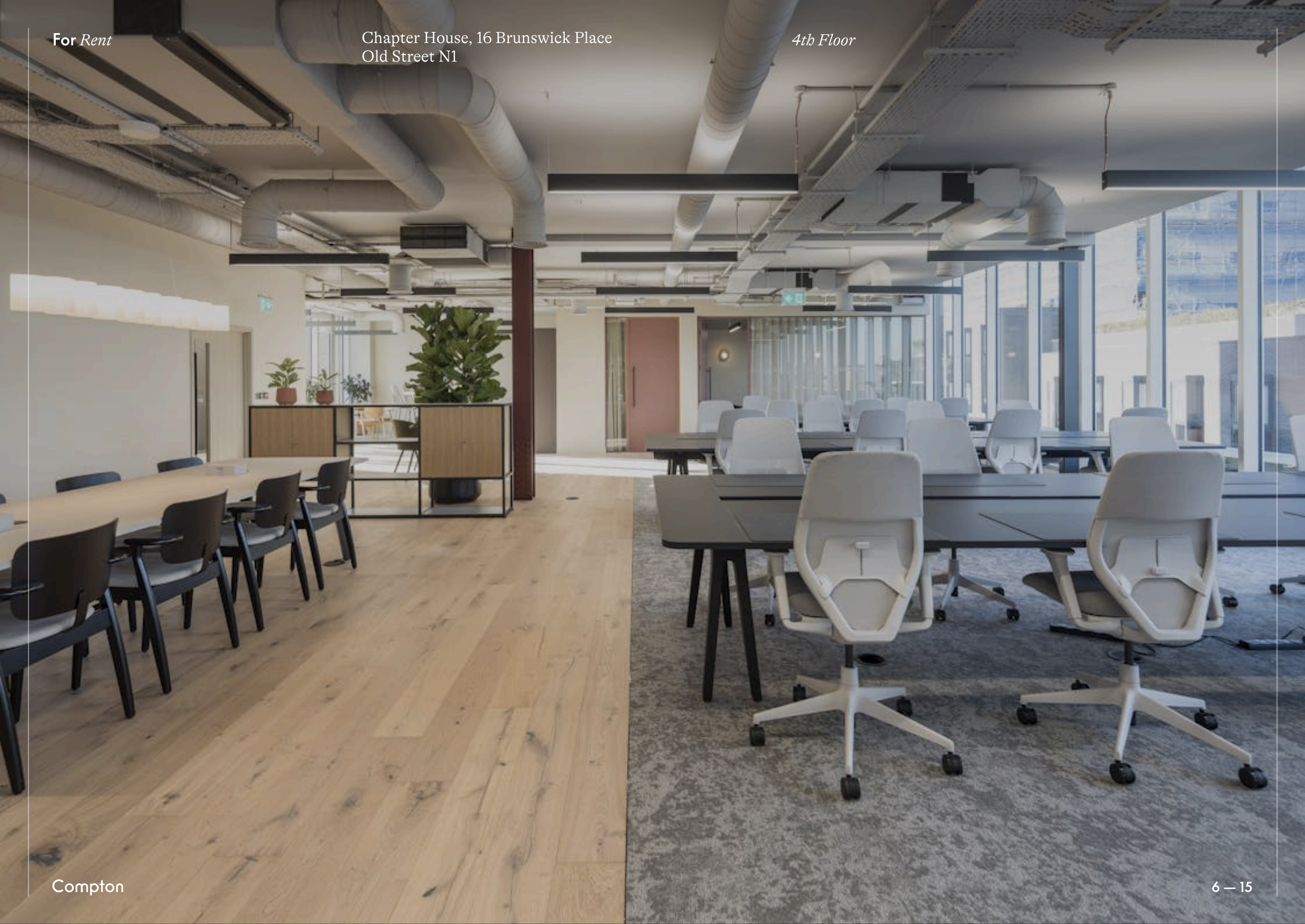
Compton



For Rent

Chapter House, 16 Brunswick Place  
Old Street N1

4th Floor



Compton

6 — 15



*For Rent*

Chapter House, 16 Brunswick Place  
Old Street N1

*3rd Floor*



*4th Floor*

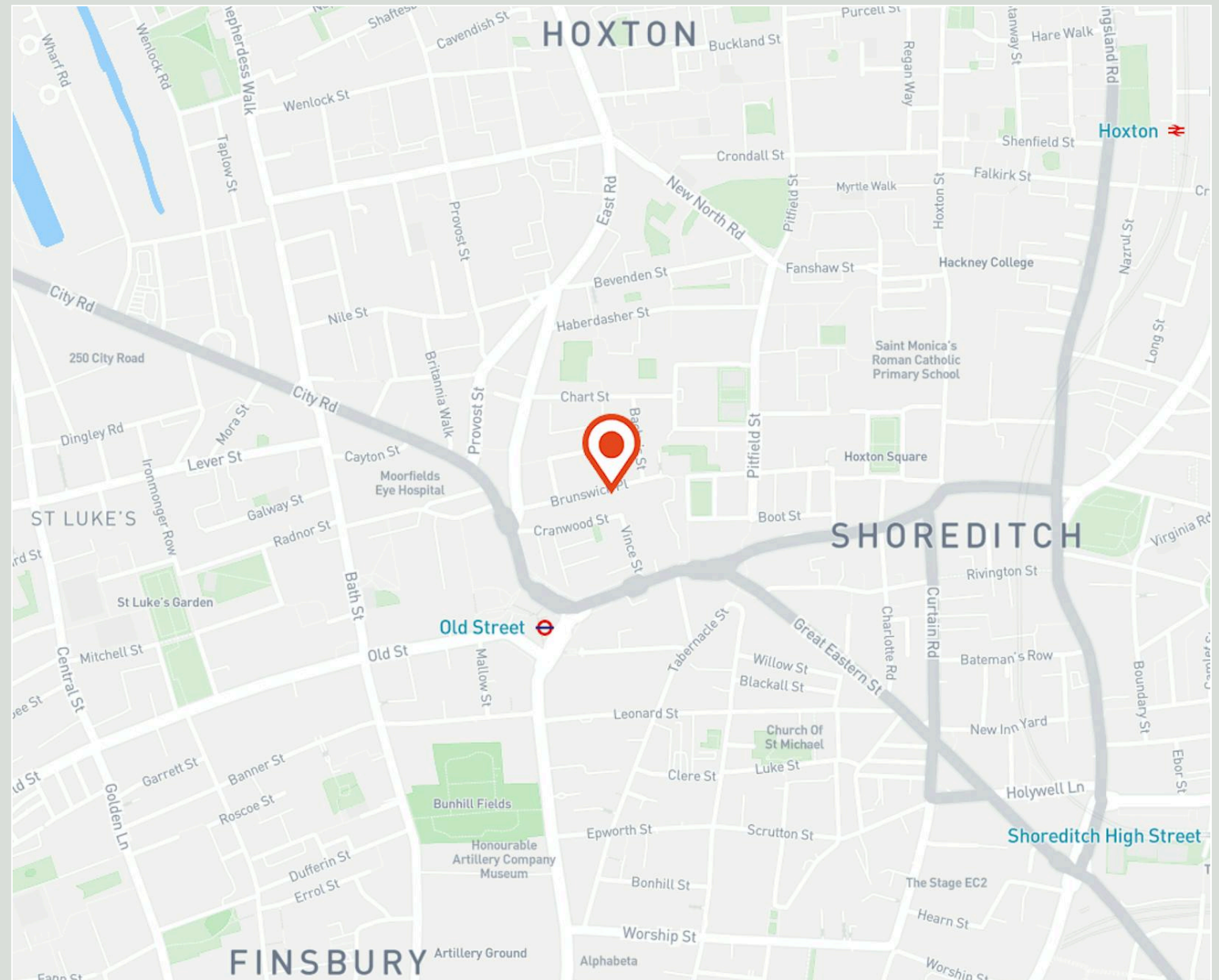


**For Rent**

Chapter House, 16 Brunswick Place  
Old Street N1

*Location*

Chapter House is strategically located within a short walking distance of Old Street, Shoreditch and Liverpool Street providing unbeatable transport options for occupier's. A district that has an eclectic mix of thriving coffee shops and roasteries. Immerse yourself in emerging trends and specialty coffee tasting. From baristas to Boxpark - from food to fashion, the location offers an abundance of design, style and taste.



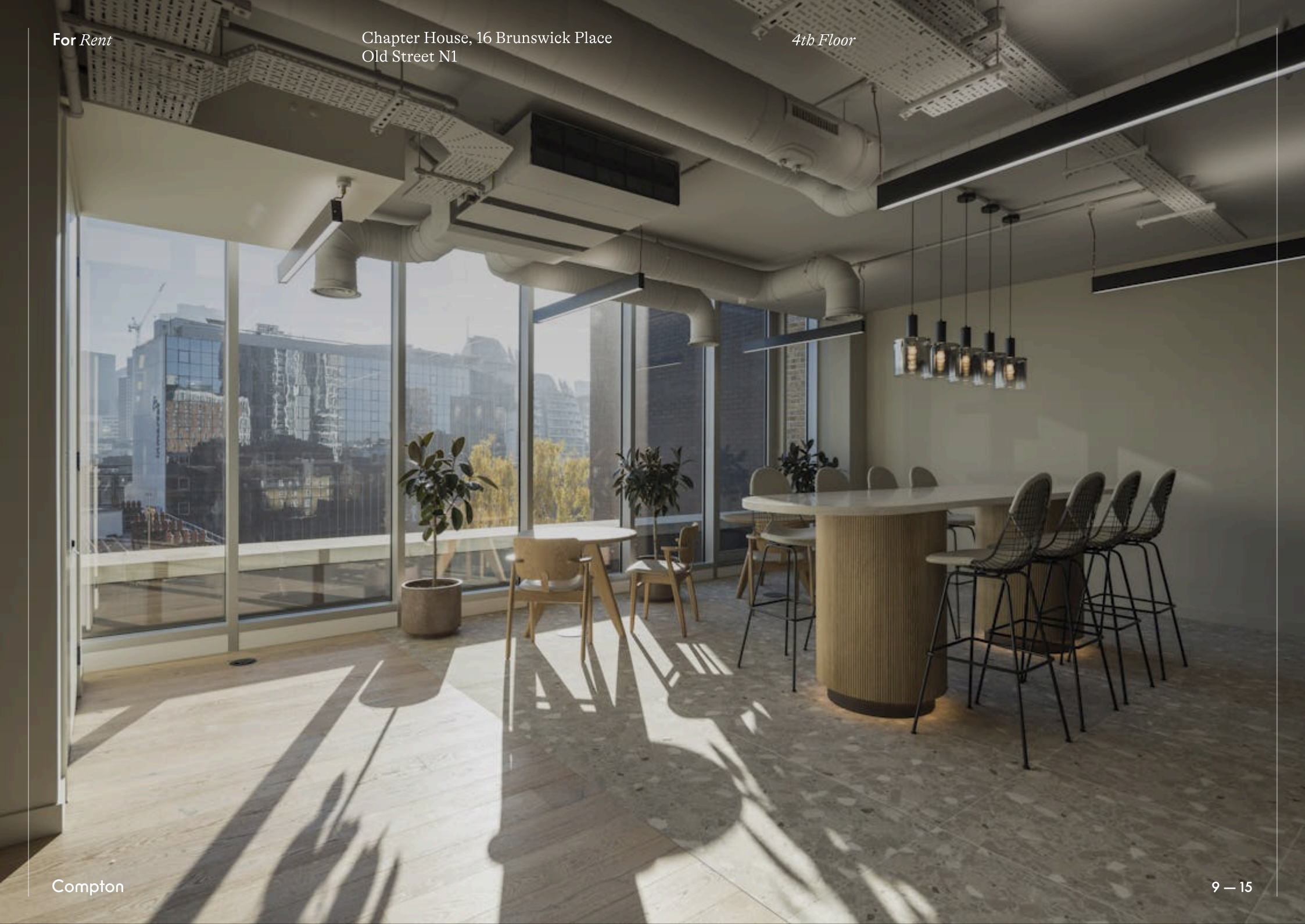
Compton



For Rent

Chapter House, 16 Brunswick Place  
Old Street N1

4th Floor



Compton



**For Rent**

Chapter House, 16 Brunswick Place  
Old Street N1

## Amenities

- Converted Victorian school
- Excellent floor to ceiling height
- Fantastic natural light throughout
- CAT A and CAT A+ options available
- 3.5m ceiling heights on the 1st floor
- Air conditioning
- Panoramic views of the City
- 2x roof terraces on the 3rd floor
- 2x passenger lifts
- 86 bike racks
- 9 showers

Compton

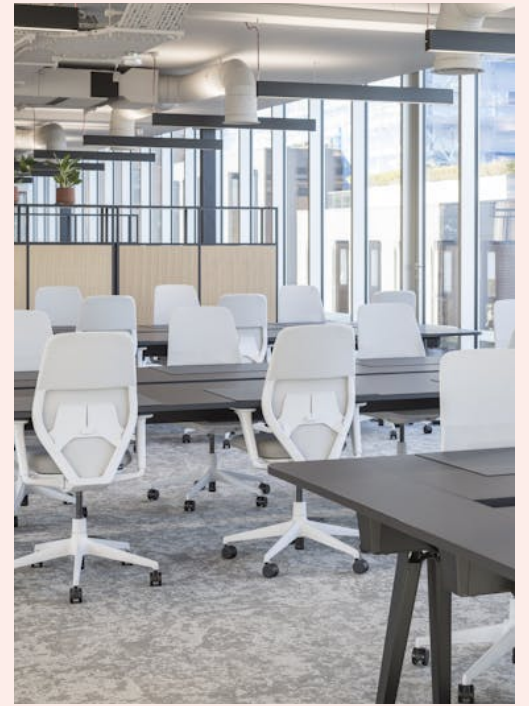




*For Rent*

Chapter House, 16 Brunswick Place  
Old Street N1

*4th Floor*



*3rd Floor Terrace*

Name	Sq Ft	Rent (Sq Ft)	Rates Payable (Sq Ft)	Service Charge (Sq Ft)	Total /Sq Ft	Total Month	Total Year	Availability
4th	4,850	£65	£21.28	£15.88	£102.16	£41,289.67	£495,476	Under Offer
3rd	5,722	£55	£21.28	£15.88	£92.16	£43,944.96	£527,339.52	Available
1st	7,412	£49.50	£25.30	£15.88	£90.68	£56,010.01	£672,120.16	Available
Unit - Ground & Lower Ground	5,580	£39.50	£19.97	£15.88	£75.35	£35,037.75	£420,453	Available
Ground	1,338	£39.50	£21	£15.88	£76.38	£8,516.37	£102,196.44	Available



## For Rent

Chapter House, 16 Brunswick Place  
Old Street N1

### Terms

New full repairing & insuring lease(s) available for a term by arrangement direct from the Landlord.

### VAT

The building is elected for VAT.

### Local Authority

The London Borough of Hackney.

### Tenure

New Lease

### Availability

Available Immediately

### Legal Costs

Each party to bear their own costs

### VAT

Applicable

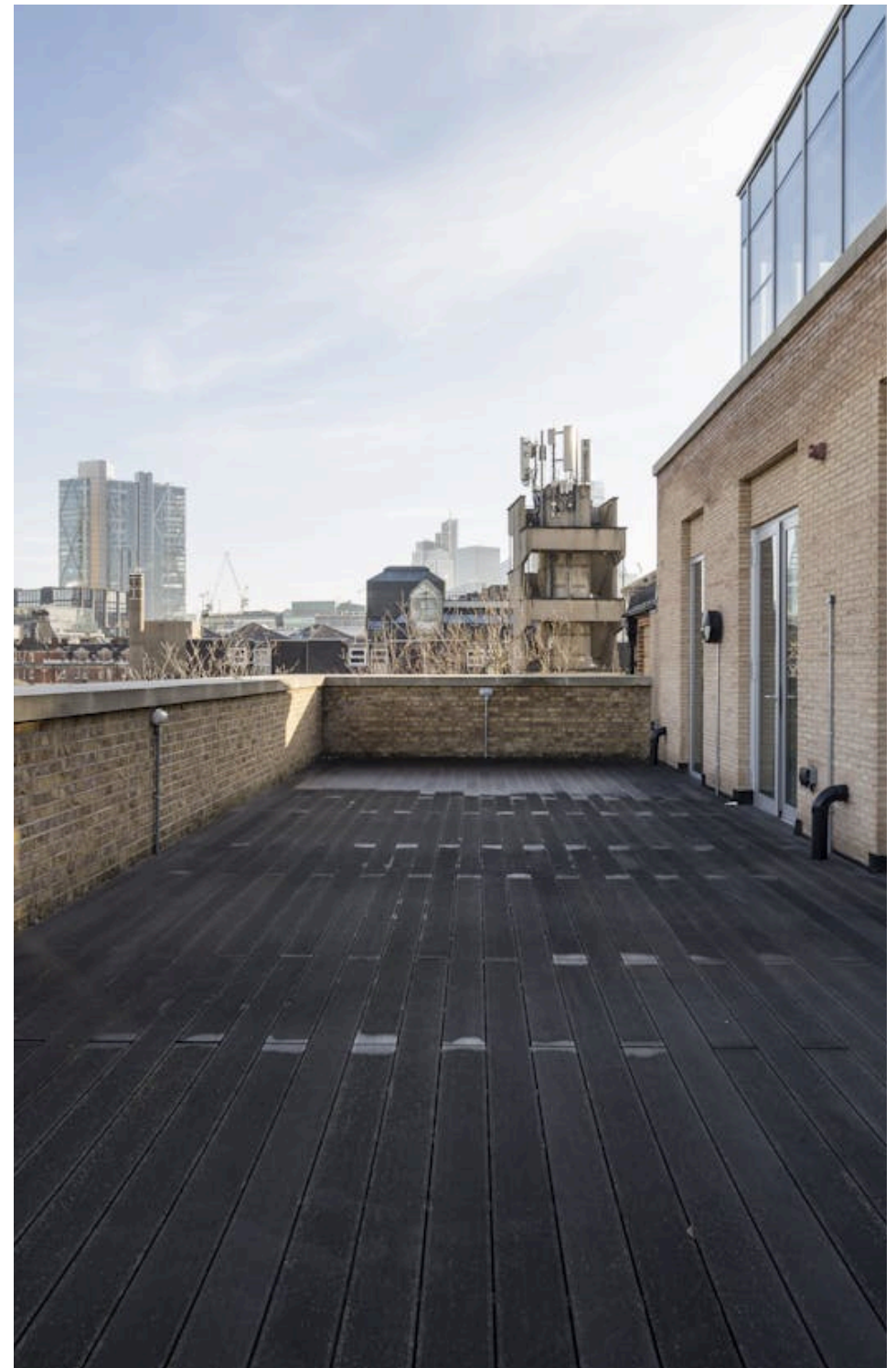
### Compton Concierge

Want your workspace *managed*?

Find out more

### Content

Watch the Film  
(click button)



Contact Us

compton.london

020 7101 2020

enquiries@compton.london

All appointments to view must be arranged via sole agents, Compton, through:



**Josh Perlmutter**

jp@compton.london

0207 101 2020 | 07814 699 096



**Shaun Simons**

ss@compton.london

0207 101 2020 | 07788 423131



**Sonia Oberoi**

so@compton.london

020 7101 2020 | 07483 882 598