



7 Roman Camp Cottages, Broxburn

Offers Over £162,000



7 Roman Camp Cottages

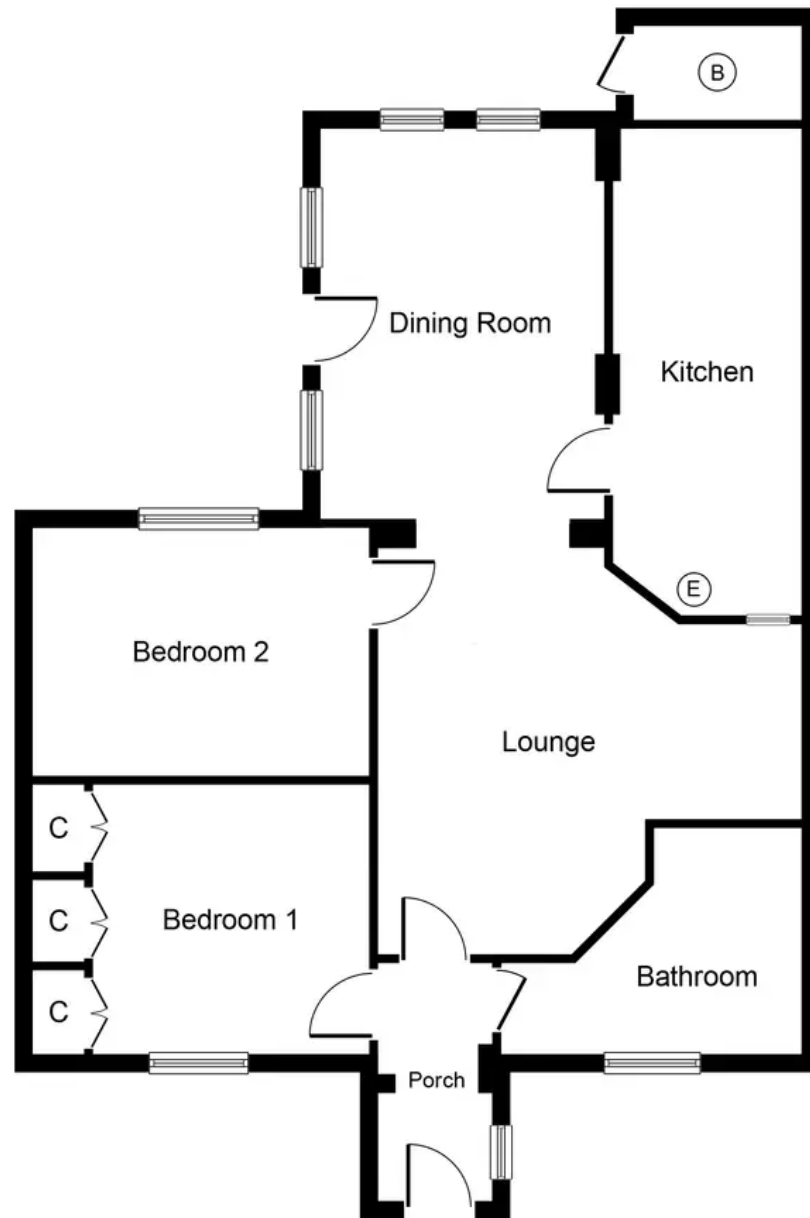
Broxburn

Charming two bedroom semi rural cottage offers beautifully styled accommodation on one level.
Council Tax band: B

Tenure: Freehold

- Beautifully Designed Traditional Cottage In Semi Rural Location
- Traditional Features With Modern Interior
- Two Double Bedrooms
- Separate Dining Room With Traditional Wooden Beams and Skylight Windows
- Traditional Log Burner In Livingroom
- Modern Bathroom
- Three Outdoor Garden Spaces
- Large Outbuilding To The Rear With Parking Area
- Move In Condition





Approximate Floor Area
879 sq. ft.
(81.7 sq. m.)

Whilst every attempt has been made to ensure the accuracy of the floor plan contained here, measurements of doors, windows, rooms and any other items are approximate and no responsibility is taken for any error, omission, or mis-statement. The measurements should not be relied upon for valuation, transaction and/or funding purposes. This plan is for illustrative purposes only and should be used as such by any prospective purchaser or tenant. The services, systems and appliances shown have not been tested and no guarantee as to their operability or efficiency can be given.



KnightBain Estate Agents

Knightbain, 4 Greendykes Road, Broxburn - EH52 5AG

01506 852000

info@knightbain.co.uk

www.knightbain.co.uk/

