



 Bede Brooke

**12 Barnston, Ashington - NE63 9TU**

Offers Over **£140,000**





## GROUND FLOOR

### Entrance Porch

### Lounge

14' 9" x 14' 2" (4.50m x 4.31m)

### Dining Room

7' 9" x 9' 11" (2.37m x 3.03m)

### Kitchen

6' 8" x 10' 6" (2.02m x 3.21m)

## FIRST FLOOR

### Bathroom

5' 11" x 5' 11" (1.80m x 1.80m)

### Bedroom

8' 4" x 9' 1" (2.55m x 2.76m)

### Bedroom

8' 8" x 13' 9" (2.65m x 4.18m)

### Bedroom

10' 6" x 5' 11" (3.20m x 1.80m)

## GARAGE





# 12 Barnston

Ashington, Ashington

Three bedroom property on the popular North Seaton estate. Requiring some modernisation, this property will provide an ideal base for a family home. With large rear garden, good sized rooms and off street parking this property is not to be missed.

Council Tax band: B

Tenure: Freehold

- NO CHAIN
- IN NEED OF MODERNISATION
- THREE BEDROOM SEMI
- OFF STREET PARKING
- FRONT AND REAR GARDENS
- GARAGE







#### **FRONT GARDEN**

Open front garden with lawn and driveway leading to garage

#### **REAR GARDEN**

Large enclosed rear garden with lawn

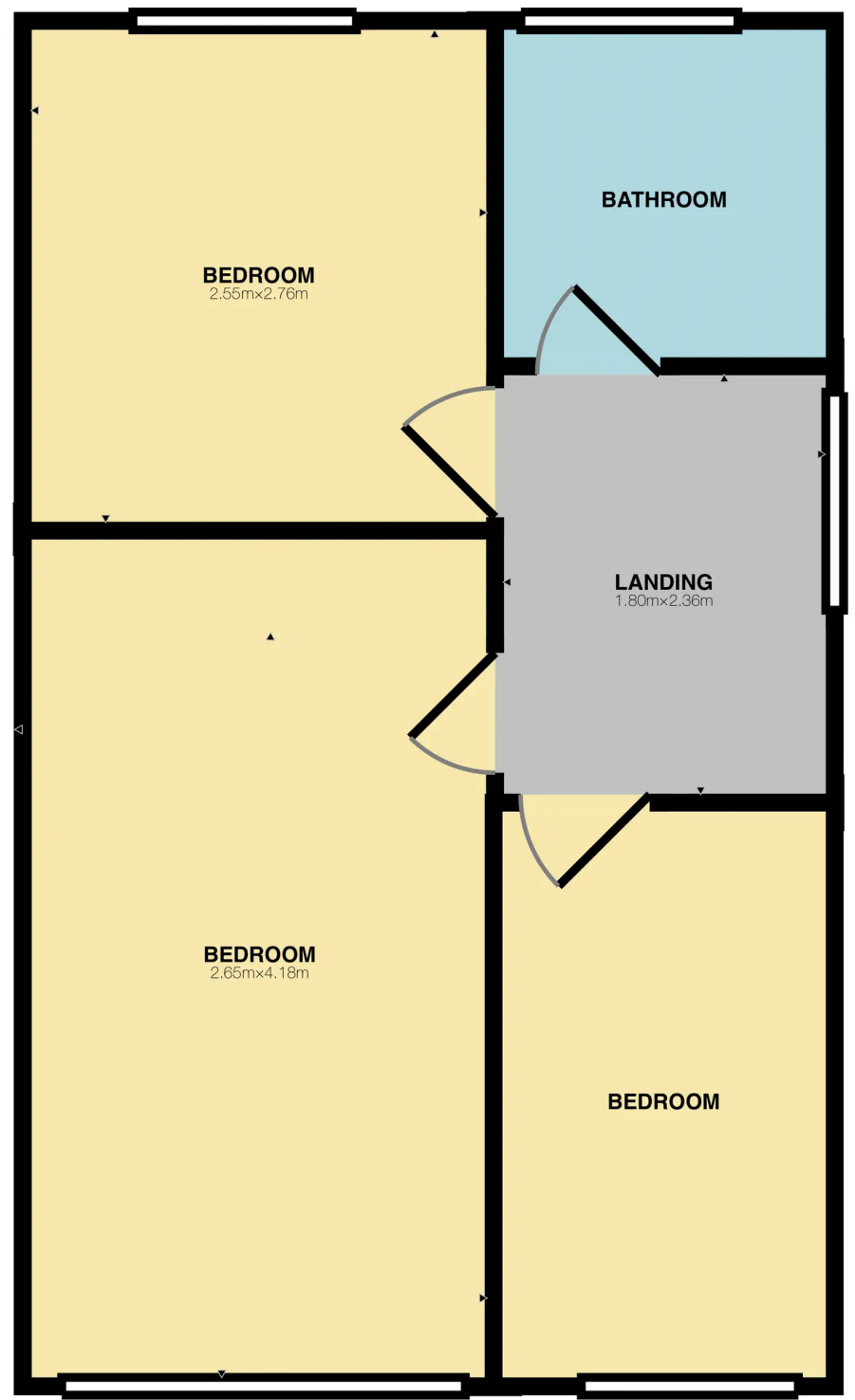
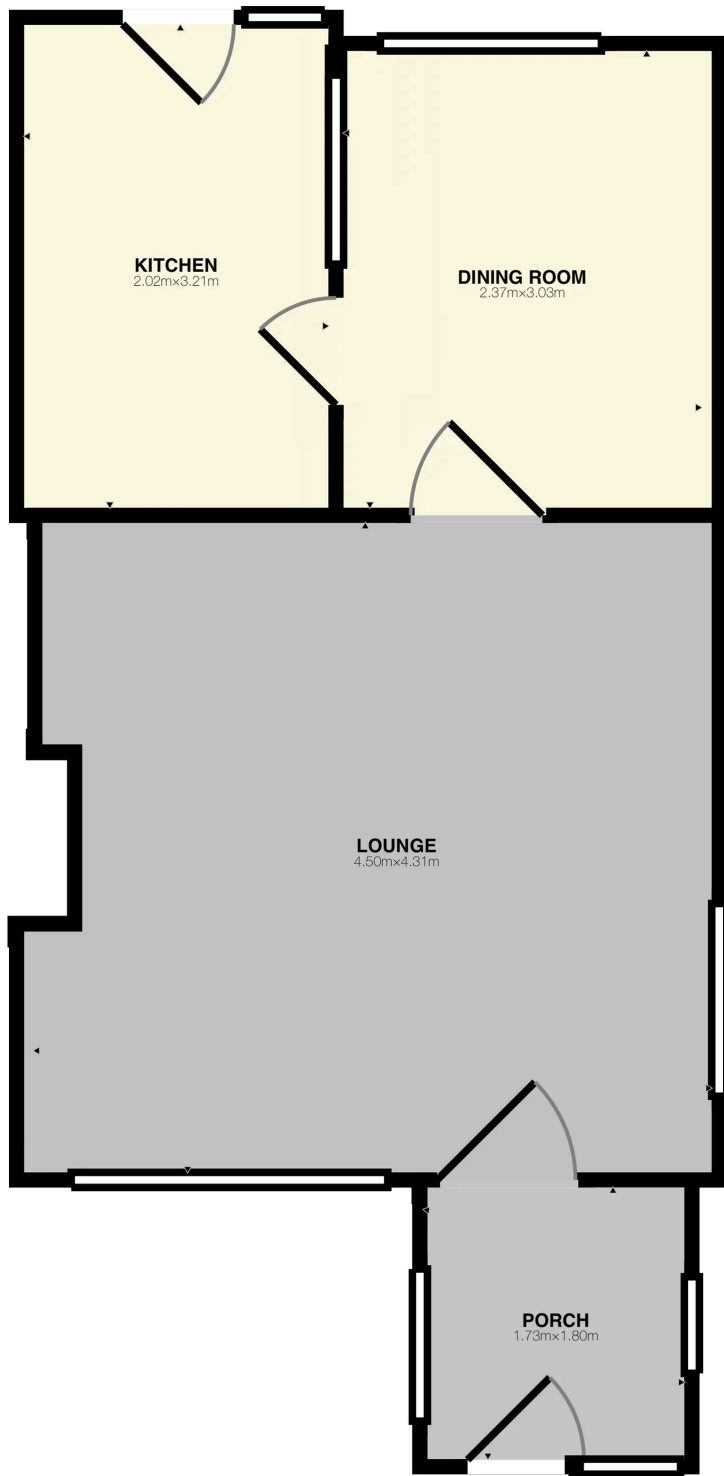
#### **GARAGE**

Single Garage

#### **DRIVEWAY**

1 Parking Space









## Bedebrooke

16 Belle Vue Crescent, Sunderland - SR2 7SH

0191 511 8093 • [info@bedebrooke.co.uk](mailto:info@bedebrooke.co.uk) • <http://www.bedebrooke.co.uk>



**Bedebrooke**