



Being sold via Secure Sale online bidding. Starting Bid £115,000

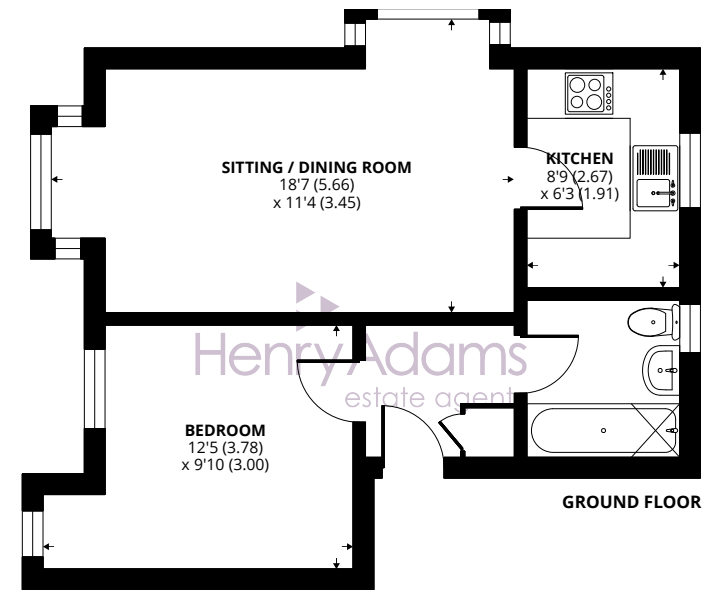
A purpose built one bedroom flat in close proximity of the village centre and amenities.



- ▶ Ground floor purpose built flat
- ▶ Sitting room
- ▶ Kitchen
- ▶ Double bedroom
- ▶ Bathroom
- ▶ Communal garden
- ▶ 65 years remaining on lease
- ▶ Service charges £101 pm
- ▶ Ground rent
- ▶ Being sold via Secure Sale online bidding. Terms and Conditions

Roman Way is a development of purpose built flats and number one is a ground floor flat. Perfect for someone looking for a project, this flat is in need of modernisation but holds a lot of potential. The property features a sitting room, kitchen, double bedroom, bathroom, and comes with allocated parking and access to a communal garden. Although the lease has 65 years remaining, with some TLC, this flat can be transformed into a charming haven for its new owners to enjoy.

Perfectly located for the village centre and amenities, with the village hall opposite and the doctors surgery only a short walk away. Billingshurst is a thriving large village in the heart of West Sussex and surrounded by some fine countryside with a main line station to London (Victoria approximately 65 minutes) and the South Coast. Highly sought after schools in the locality from infant to sixth form with the Junior School and then The Weald Community School. Leisure facilities with the Football Club, Cricket Club, tennis and bowls clubs, leisure centre with gym and swimming pool are all nearby. The centre, with its good range of shopping facilities including Sainsburys and Lidl, restaurants, pubs, library, post office, doctors' surgery, churches and bus services. The village provides good links with both Horsham and Gatwick International Airport. There is an abundance of history dating back to Roman times and many countryside walks on your doorstep.



Approximate Area = 435 sq ft / 40.4 sq m
For identification only - Not to scale

