



Unit 11 Chess Business Park

Moor Road, Chesham, HP5 1SD

MODERN OFFICES WITH PARKING

1,513 sq ft
(140.56 sq m)

- Ground and First Floor open plan offices
- Fully carpeted throughout
- LED lighting
- Kitchenette, 2 x WCs and 1 x accessible WC
- Gas central heating via radiators
- 7 Car parking spaces

Unit 11 Chess Business Park, Moor Road, Chesham, HP5 1SD

Summary

Available Size	1,513 sq ft
Rent	£26,000.00 per annum Plus VAT
Rates Payable	£13,952 per annum 2023
Rateable Value	£27,250
Service Charge	£692.50 per annum
VAT	Applicable
Legal Fees	Each party to bear their own costs
EPC Rating	A (25)

Description

Unit 11 Chess Business Park comprises ground and first floor offices with kitchenette, LED lighting, intercom, security alarmed, carpeting throughout and perimeter trunking. Both floors are open plan with the first floor also benefitting from 3no. partitioned spaces.

There are 7 car parking spaces associated with the property.

Location

Chess Business Park is a commercial estate with a mixture of office and light industrial units, accessible off the link road between Amersham and Chesham.

Chesham is strategically located northwest of London, with good proximity to Watford, Hemel Hempstead & High Wycombe. The area has excellent road connectivity, with easy access to the M25, M1 & M40. The Metropolitan Line station provides a direct link to Central London and there is a railway station in nearby Amersham.

Accommodation

Name	sq ft	sq m	Availability
Ground	697	64.75	Available
1st	816	75.81	Available
Total	1,513	140.56	

Terms

Available to let on a new lease direct from the Landlord on terms to be agreed.

Business Rates

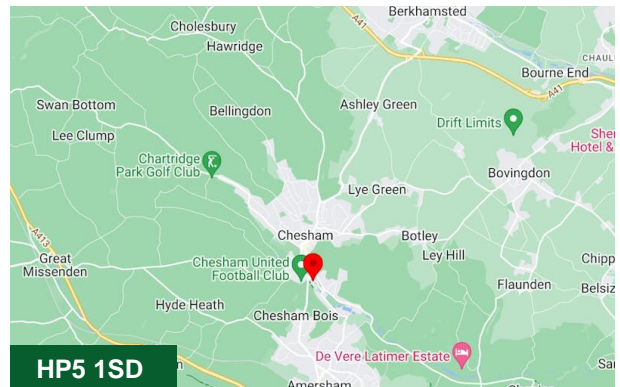
Rateable Value £27,250

EPC

A25

Money Laundering and Identity Checks

Money Laundering and Identity Checks will be carried out on all tenants and proof of identity documents will be required.



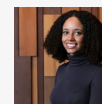
Viewing & Further Information



Joanna Kearvell

01296 255020 | 07887 793030

jk@chandlergarvey.com



Neave DaSilva

01494 446612 | 07827 908926

nds@chandlergarvey.com