



## 19 Graphite Court, 8 Arla Place

Ruislip

Offers in Region of **£400,000**

 **LAWRENCE RAND**

# 19 Graphite Court

, Ruislip

Set on the first-floor of this modern apartment building is this lovely two double-bedroom, two-bathroom property with the benefit of a long lease, residents parking, balcony and no onward chain. Council Tax band: D

Tenure: Leasehold

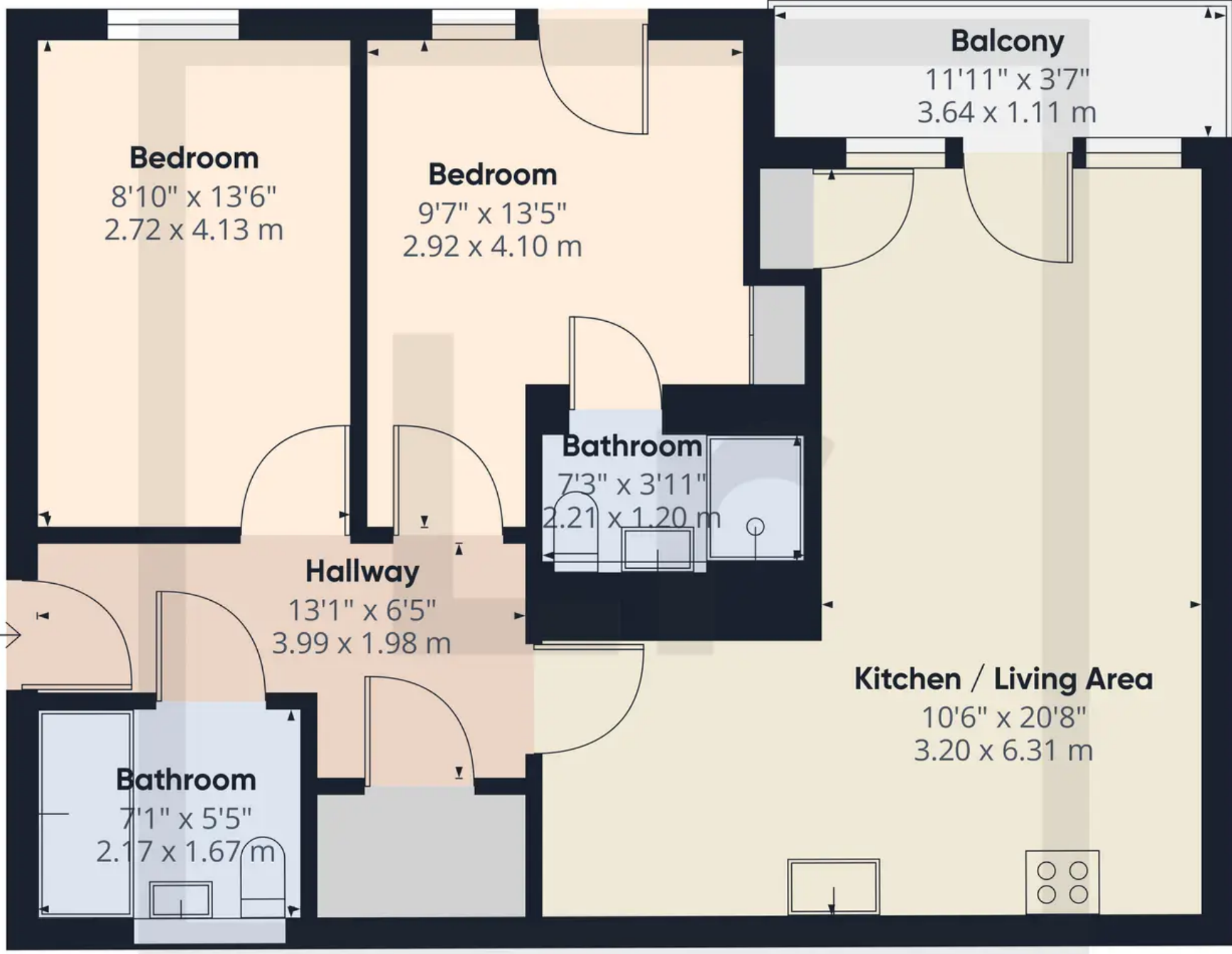
EPC Energy Efficiency Rating: B

EPC Environmental Impact Rating: A

- Two double bedrooms
- Two bathrooms
- Balcony
- Allocated parking
- Excellent condition







Approximate total area<sup>(1)</sup>  
695.69 ft<sup>2</sup>  
64.63 m<sup>2</sup>

(1) Excluding balconies and terraces

While every attempt has been made to ensure accuracy, all measurements are approximate, not to scale. This floor plan is for illustrative purposes only.



## Lawrence Rand

Lawrence Rand, 106 Victoria Road - HA4 0AL

01895 632211

[Info@lawrence-rand.co.uk](mailto:Info@lawrence-rand.co.uk)

[www.lawrence-rand.co.uk/](http://www.lawrence-rand.co.uk/)



**LAWRENCE RAND**