

HOME  TRUTHS

CRESCENT
1951

337 The Green, Ecclestone

Chorley



£125,000



Dating back to 1851 this two bedroom mid terrace property on Grove Crescent on The Green offers 550 square feet of accommodation. The property is being sold with tenants in situ and currently generates a gross return of c6.5%. Garden fronted, the property is entered via the vestibule and from there into the living room with imposing stone hearth. The dining kitchen is to the rear with understair storage capable of housing a fridge/freezer and a range of wall and base units with gas hob, electric oven and space, power and plumbing for appliances. To the first floor, bedroom one is a large double to the front, with bedroom one a comfortable single to the rear with views over to Harrock Hill. The bathroom comprises floating wash hand basin, wc and electric shower in cubicle with an airing cupboard housing the Worcester combi boiler. Externally the west facing courtyard garden has gated access out for bins etc. If you are looking to increase or start your rental portfolio then this property with the current tenants has plenty to offer.

Dating back to 1851 this two bedroom mid terrace property is on Grove Crescent and offers 550 square feet of accommodation. The property is being sold with tenants in situ and currently generates a gross return of c6.5%.

Council Tax band: A

Tenure: Freehold

- Mid terrace property
- Two bedrooms
- Sold with long term tenant in situ
- Gross return of over 6%
- Virtual tour
- Close to amenities



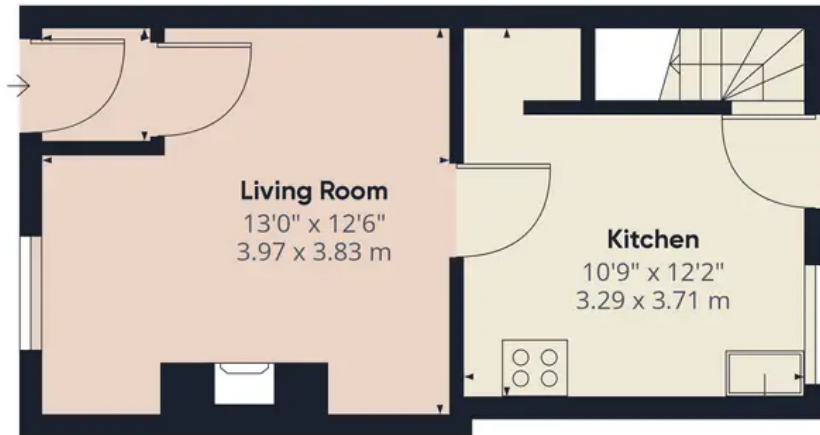
HOME  TRUTHS

Eccleston Branch
265 The Green, Eccleston, PR7 5TF
01257 451673

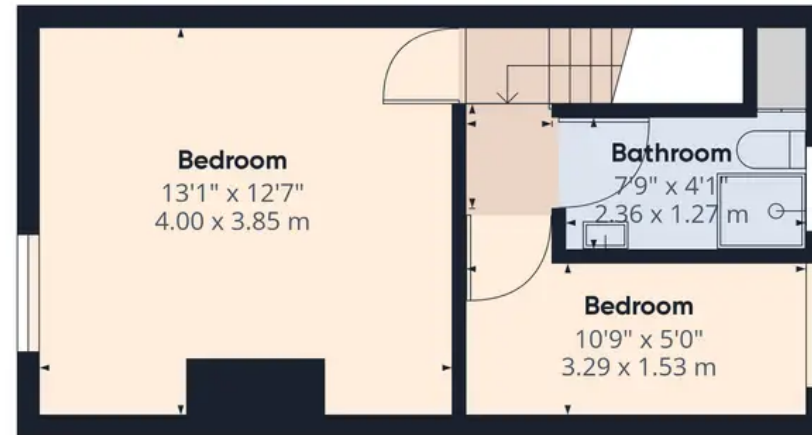
Coppull Branch
244 Spendmore Lane, Coppull, PR7 5DE
01257 794588

www.hometruthslancs.co.uk
office@hometruthslancs.co.uk





Floor 1



Floor 2

Approximate total area⁽¹⁾

556.2 ft²

51.67 m²

(1) Excluding balconies and terraces

While every attempt has been made to ensure accuracy, all measurements are approximate, not to scale. This floor plan is for illustrative purposes only.

GIRAFFE360