



The  
**Eden  
Club**

LIVE IN COMFORT AND STYLE WITH  
UNIQUE LEISURE FACILITIES AT EDEN GROVE



**Berkeley**  
Designed for life



Start your day at the on-site gym, then catch up on emails in the comfort of the co-working space. Later on you can enjoy a movie with friends in the private cinema, just moments from your home.



*Life's easier at Eden Grove,  
with state-of-the-art amenities  
all under one roof*

Residents will have exclusive use of a fantastic range of amenities, including a 24-hr concierge, co-working space, private gym and cinema room.



Computer generated image, indicative only.

*A warm welcome awaits you  
in the front lobby*



The convenient concierge is designed to make life easier, giving you security and peace of mind even when you're not home.





## *Co-working Space*

The thoughtful and carefully curated design of the residents' lounge has created a beautiful space perfect for socialising, relaxing or working. Residents' have access to the separate meeting room, creating the most exclusive of clubs.



## *Residents' Gym*

Enjoy a workout on the latest equipment in the luxury surroundings of the private 2,300 sq. ft. gymnasium with space for spin, yoga and free weights, whilst a separate studio space is available for a range of classes with personal trainers on hand to craft bespoke fitness programmes.



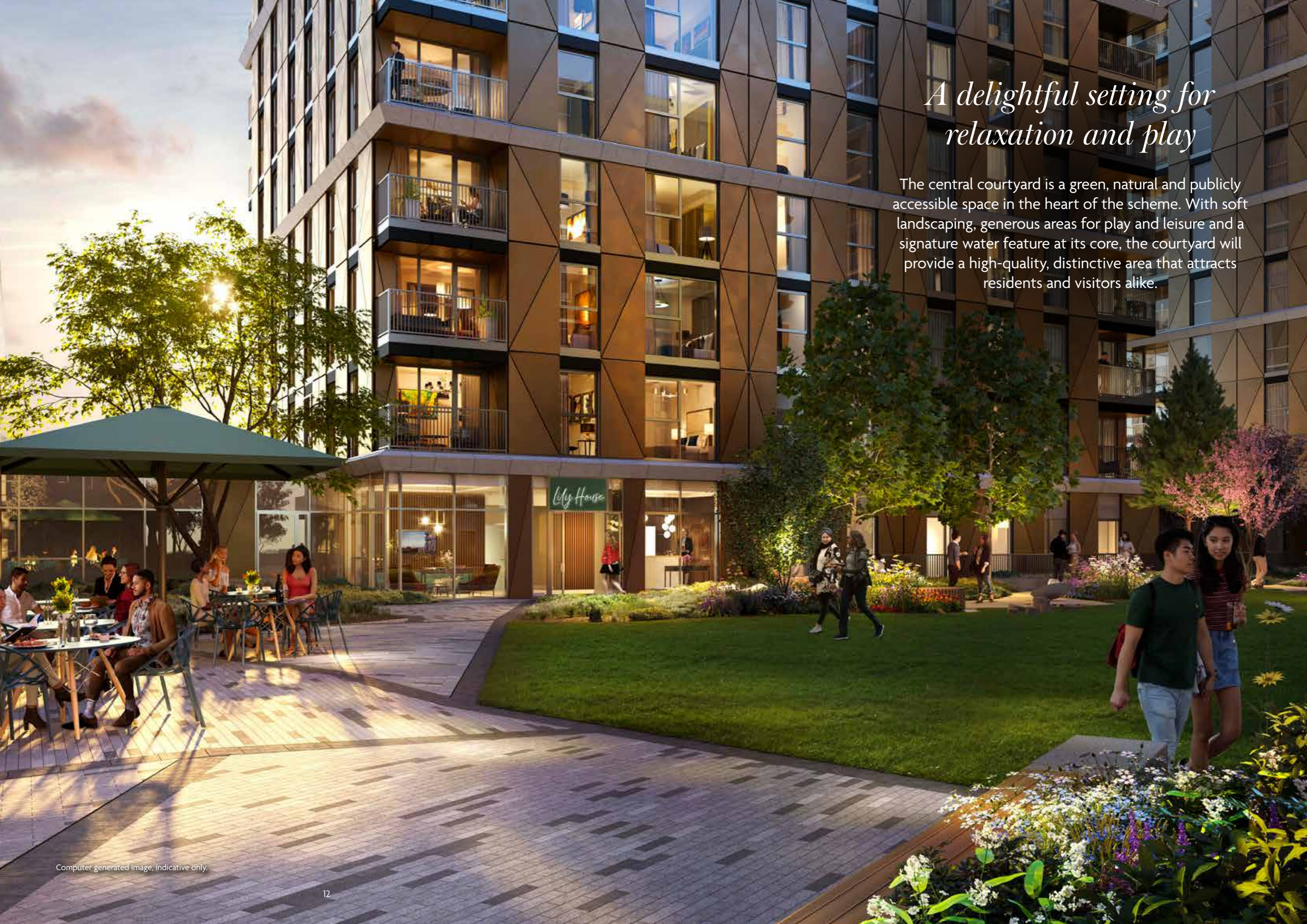




## *Cinema Room*

Why not host an intimate screening or gather a wider group to take in the latest film or sporting event. The private cinema room has everything you need for a night of entertainment.

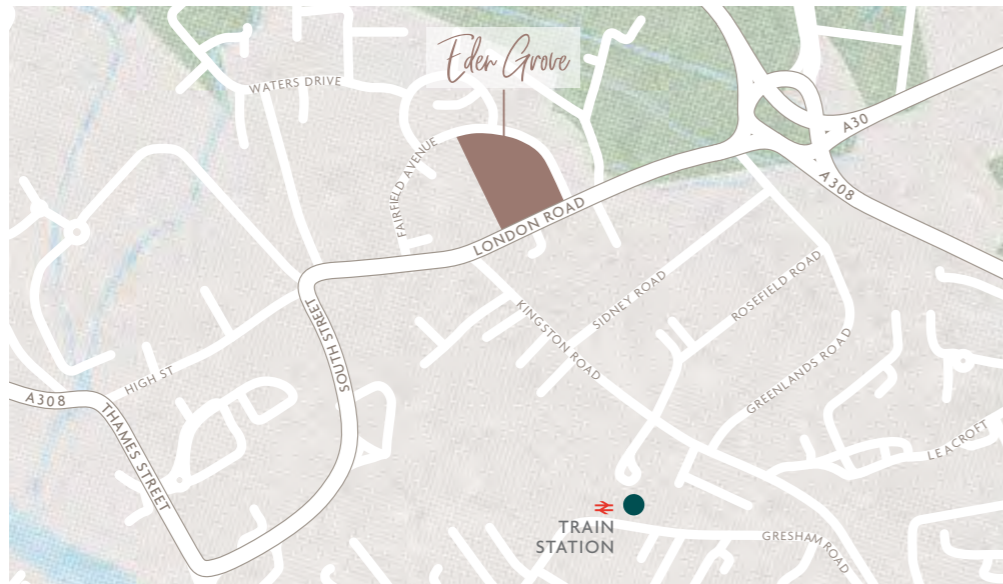




*A delightful setting for  
relaxation and play*

The central courtyard is a green, natural and publicly accessible space in the heart of the scheme. With soft landscaping, generous areas for play and leisure and a signature water feature at its core, the courtyard will provide a high-quality, distinctive area that attracts residents and visitors alike.





Map is indicative and not to scale.

### Walking from the station

Turn left out of the station car park and walk down Kingston Road until you reach London Road. Cross the road and turn right, walk along London Road until you reach Fairfield Avenue, where you need to turn left. As you walk down Fairfield Avenue the Eden Grove Sales & Marketing Suite will be on your left.

### Driving

From London travel west bound via the M4 and onto M25. Turn off at junction 13 onto A30. Take the 4th exit at the round about onto London Road. Eden Grove is on the right next to Fairfield Avenue.

### Contact us

Sales & Marketing Suite, Fairfield Avenue, Staines-Upon-Thames TW18 4AE  
T: +44(0)1784 817 732 E: [sales@edengrove-london.co.uk](mailto:sales@edengrove-london.co.uk)  
W: [edengrove-londonroad.co.uk](http://edengrove-londonroad.co.uk)



Computer generated image, indicative only.



[EDENGROVE-LONDONROAD.CO.UK](http://EDENGROVE-LONDONROAD.CO.UK)

**Berkeley**  
Designed for life