



1 Richmond Crescent, Epsom
Epsom

Guide Price **£1,175,000**



1 Richmond Crescent

Epsom, Epsom

Stunning 4/5 bed semi-detached townhouse in Noble Park. Spacious living across 3 floors, modern kitchen with bi-fold doors to garden, main reception room with balcony and green views. Front & rear garden with outdoor entertaining space. Stylish and elegant with potential for extension.

Council Tax band: G

Tenure: Freehold

EPC Energy Efficiency Rating: B

EPC Environmental Impact Rating: B

- 4 / 5 Bedrooms
- Family Semi-Detached Home
- Three Bathrooms, One ensuite
- All High Spec & Modern Bathrooms & Kitchen
- Front and Rear Garden
- Separate Utility, Cloakroom
- Integral Garage & Offstreet Parking
- Extension Potential (STPP)
- Noble Park
- Superb Outside Entertaining Space & Woodburner



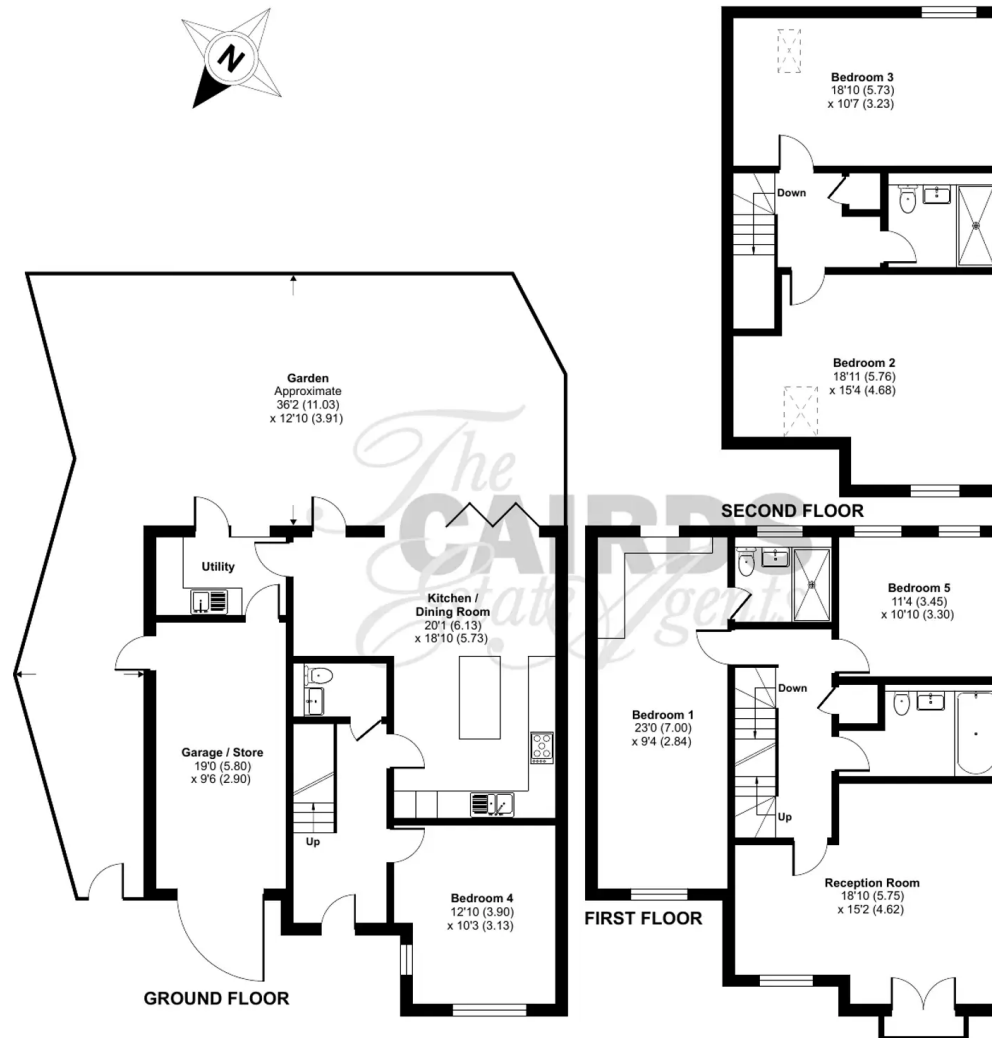
Richmond Crescent, Epsom, KT19

Approximate Area = 2090 sq ft / 194.1 sq m

Garage = 177 sq ft / 16.4 sq m

Total = 2267 sq ft / 210.5 sq m

For identification only - Not to scale







Cairds The Estate Agents

Cairds The Estate Agents, 128-130 High Street - KT19 8BT

01372 743033 • homes@cairds.co.uk • www.cairds.co.uk