



ADDISON ROAD
HOLLAND PARK, W14



A stunning and truly unique 'artist's' penthouse with wonderful volumes, light and aspects and over 3,000 square feet of internal living space. The flat is on the second floor of a grand white stucco fronted detached house on one of Holland Park's most desirable streets, Addison Road. As well as a drawing room with almost 4 metre ceiling heights, there is a large studio room, further reception space, four bedrooms and four bathrooms and a spacious south facing terrace. The large west facing garden is shared by the four flats in the building.

Accommodation and Amenities:

- Reception Hall
- Drawing Room
- Studio Room
- Dining Area
- Study Area
- Four Bedrooms
- Four Bathrooms (three en-suite)
- Kitchen
- Utility Room
- South Facing Terrace
- Large shared West facing Garden

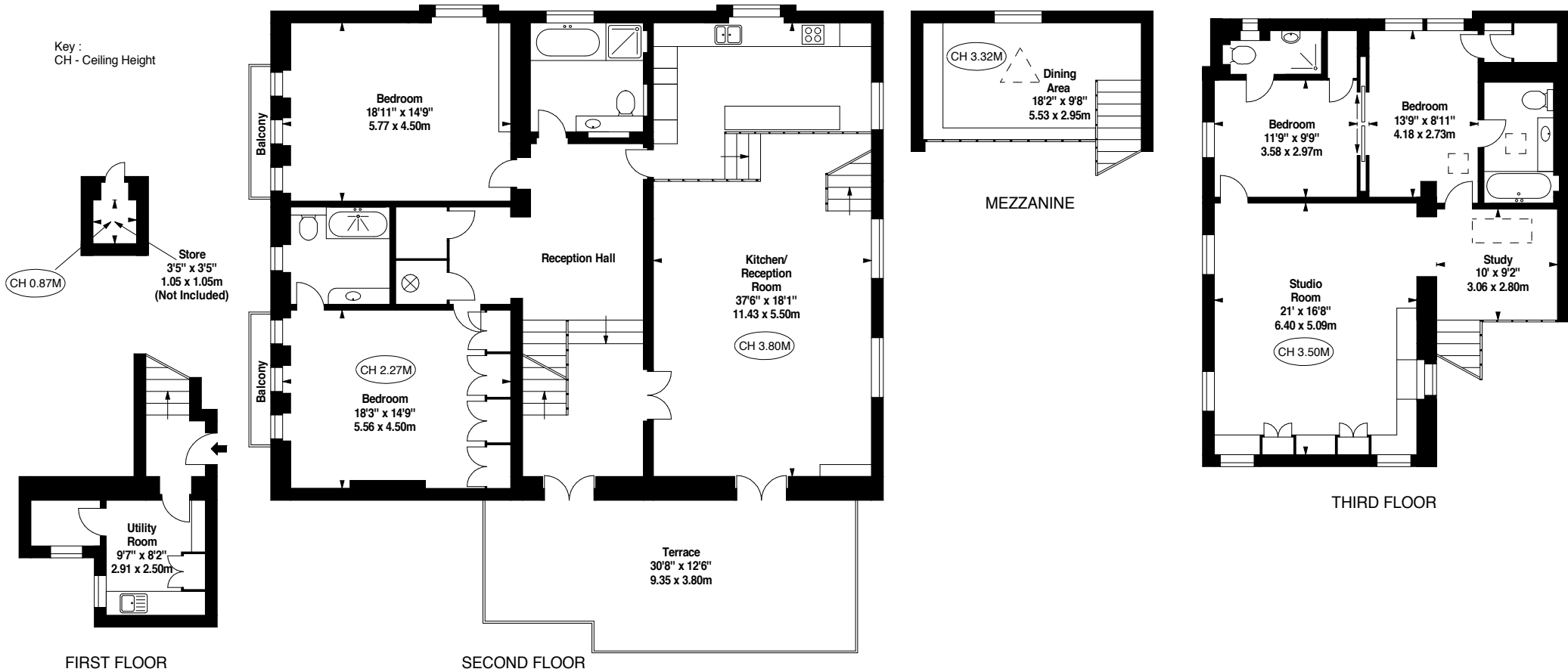




ADDISON ROAD, W14



Key :
CH - Ceiling Height



PRICE: POA
 TENURE: LEASEHOLD WITH APPROXIMATELY 115 YEARS UNEXPIRED
 GROSS INTERNAL AREA: 3057 SQUARE FEET / 284.00 SQUARE METRES APPROXIMATELY
 LOCAL AUTHORITY: THE ROYAL BOROUGH OF KENSINGTON & CHELSEA

NB We wish to advise prospective purchasers that these sales particulars are believed to be correct but their accuracy is in no way guaranteed, nor do they form part of any contract. We have not carried out a detailed survey nor tested the services, appliances or specific fittings. Measurements are approximate, © FG Consultants Ltd April 2016