

S&B



2 Bedroom Riverside Apartment Kingston Riverside, Kingston Upon Thames. £799,950 Leasehold

With stunning views over the Thames and beyond from the 7th Floor of this highly sought after Riverside Development, a bright and spacious

Two double bedroom apartment with 955 sq ft of internal living space and two private terraces.

Other benefits include two luxury bathrooms with one being en-suite, large open plan reception/dining room with doors opening to one of the terraces.

High specification integrated kitchen, and a further terrace accessed via the principal bedroom.

16 hours concierge, communal roof gardens and secure underground parking available to lease by separate arrangement for £2,400 per annum

WWW.STACKANDBONNER.COM

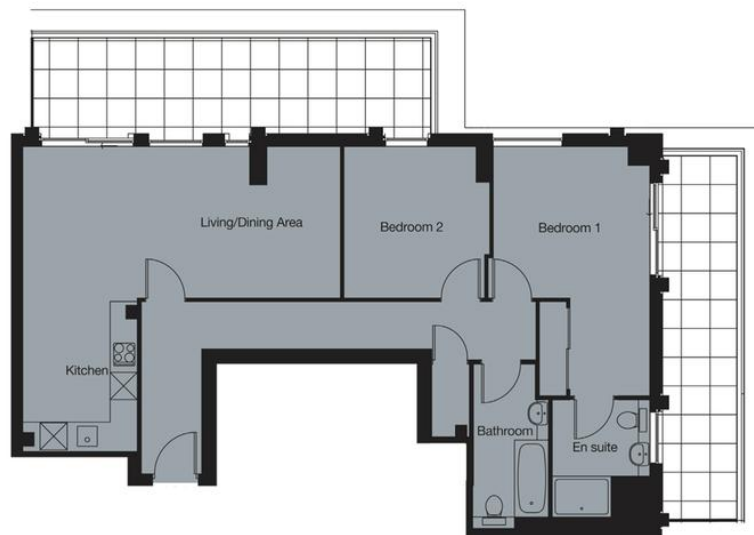
020 8974 8844

sales@stackandbonner.com



2 Bedroom Apartment

Living / Kitchen	7.02m x 3.31m	23'1" x 10'8"
Bed 1	3.46m x 3.34m	11'4" x 11'0"
Bed 2	3.34m x 3.22m	11'0" x 10'7"
Net Internal Area	88.80m ²	955ft ²
Balcony Area	35.08m ²	377ft ²



KINGSTON RIVERSIDE - Trafalgar Building



- 7th Floor River View Apartment
- Iconic Development
- 955 sq ft
- Large open plan living/dining room
- 2 Double Bedrooms
- 2 Luxury Bathrooms
- 2 Private Terraces
- High Specification Kitchen
- Underfloor Heating
- Communal Garden and Roof Garden
- Concierge Service
- Lift Service
- Service Charge: £5,708.10 per annum
- Council Tax: Band F - £3,429.57
- Ground Rent £400 per annum
- Lease 989 years remaining