



THE STORY OF
Glaven Cottage

Blakeney, Norfolk

SOWERBYS

S

THE STORY OF

Glaven Cottage

20 High Street, Blakeney, Norfolk
NR25 7AL

Stunning Period Cottage

Elegant High-End Interior

Handmade Shaker Kitchen

Ultimate Turn-key Cottage

Three Sumptuous Bedrooms

Highly Successful Holiday Let

Picturesque Loke Setting

Available Fully Furnished

Central Blakeney Location

SOWERBYS HOLT OFFICE

01263 710777

holt@sowerbys.com



“The coastline has continued to become more and more popular.”

Perfectly located within the areas most coveted loke on Blakeney’s High Street, this beautifully presented cottage holds a superb position to access Blakeney’s eclectic independent shops, cafes and highly reputable eateries along the high street. Blakeney is arguably one of Norfolk’s finest, most popular coastal villages thanks to its unrivalled beauty, access to Norfolk’s coastal path and its relationship with the River Glaven, which allows the well-known seal trips to visit Blakeney Point.

Rarely does such a timeless finish come to a period cottage in a prime coastal location. Lavish interiors integrate elegantly with the distinguished heritage of a characterful flint and brick Norfolk cottage coming together, provides a genuinely unique slice of Blakeney’s rich coastal heritage. Glaven Cottage is arguably one of the finest three-bedroom cottages to come to the market in Blakeney in recent years.

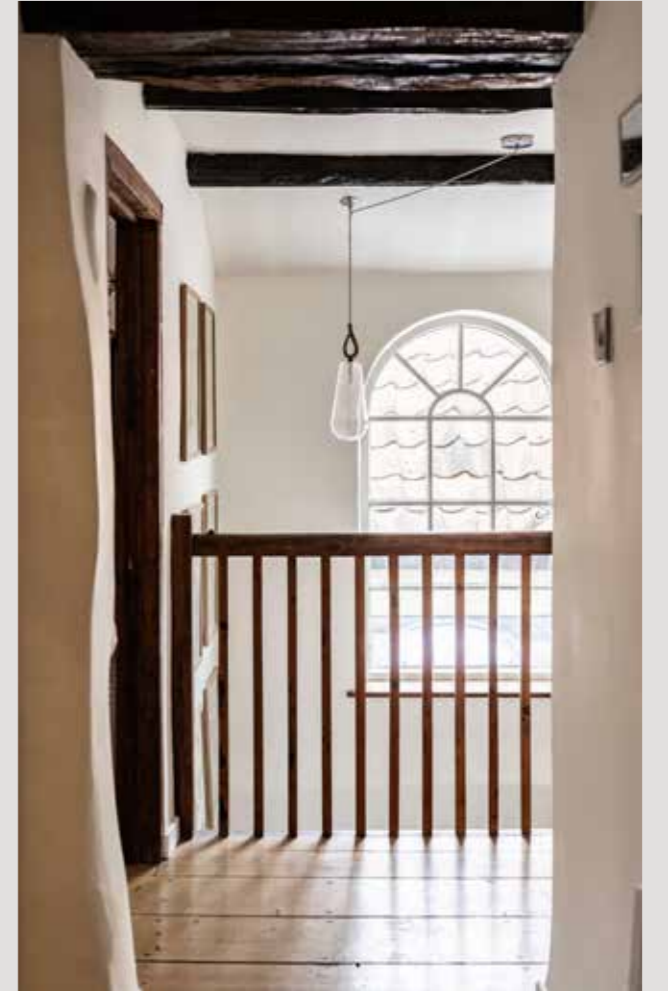


Set over three floors and efficiently arranged, the cottage features an inviting sitting room with a fireplace and wood-burner at its heart. An open-plan kitchen area features a timeless and elegant in-frame kitchen and appliances.

A concealed turning staircase leads to the first floor, where there are two individual double bedrooms, each beautifully presented and a central bath and shower room to accommodate all. Accessed via the first bedroom is a steep, open tread staircase leading to a second-floor bedroom, offering a further bedroom space and some wonderful roof-top views towards the coastline.

Currently let as a highly successful boutique holiday cottage the property is in immaculate condition and makes a perfect coastal home.

“Very cosy and relaxing in front of the wood-burner.”





Whilst every attempt has been made to ensure the accuracy of the floor plan contained here, measurements of doors, windows, rooms and any other items are approximate and no responsibility is taken for any error, omission, or mis-statement. This plan is for illustrative purposes only and should be used as such by any prospective purchaser or tenant. The services, systems and appliances shown have not been tested and no guarantee as to their operability or efficiency can be given.



ALL THE REASONS

Blakeney

IN NORFOLK
IS THE PLACE TO CALL HOME



It would be hard to find a spot which reflects the beauty of the Norfolk coast better than Blakeney. Set in an Area of Outstanding

Natural Beauty, its picture perfect location is made for Instagram-worthy shots of moored boats on mud flats, under big blue skies.

When the tide's touching the shoreline, untie your laces and dip your toes in, take the plunge or push off with a slow drift along coastal inlets on a paddleboard or boat to lose yourself in nature's finest backdrop. Forage some samphire for a taste of the coast, try your hand at catching a crab on the quay, or join the tourists and take a boat trip with Bean's to spot the seals bobbing along on the water.

Despite the relaxed scene, Blakeney was once a bustling medieval port and the village's Guildhall and Church of St Nicholas are evidence of its rich, trading past which continued until the mid-19th century. As ships grew in size and the harbour silted up, trade fell away and today only small boats can pass Blakeney Point and head out to sea. Today, the

nature reserve surrounding Blakeney Point is owned by the National Trust and thousands of nesting and migratory birds provide a twitcher's paradise where the tweets are tech-free.

Peace and, if you seek it, solitude are easily found in Blakeney. But if you are looking for company, there are plenty of places to meet and make friends. Folks Coffee and Co café is a great stop for a caffeine hit, but if you are looking for a place to eat, head to The White Horse or The Blakeney Hotel, known as iconic spots. Additionally, Wiveton Hall Fruit Farm Café – famed by owner Desmond MacCarthy's Normal for Norfolk BBC series – is a great summer destination.

Teeming with character, there are plenty of pretty brick and flint fishermen's cottages in hollyhock-lined lanes, known locally as lokes, leading off the high street, along with incredible coastal family houses and stunning new developments. Blakeney truly is a place to discover your next Norfolk home.



Note from the Vendor



Short description of where the photograph is here.

“The walks between Blakeney, Cley and Morston are some of the best in the county.”

THE VENDOR



SERVICES CONNECTED

Mains water, electricity, drainage and broadband. Electric central heating.

COUNCIL TAX

Band to be confirmed.

ENERGY EFFICIENCY RATING

E. Ref:-0350-2447-1340-2224-6781

To retrieve the Energy Performance Certificate for this property please visit <https://find-energy-certificate.digital.communities.gov.uk/find-a-certificate/search-by-reference-number> and enter in the reference number above. Alternatively, the full certificate can be obtained through Sowerbys.

TENURE

Freehold.

LOCATION

What3words: ///braved.offerings.snipped

These particulars and measurements whilst believed to be accurate, are set out as a general outline only for guidance and do not constitute any part of an offer or contract. Intending purchasers should not rely on them as statements of representation of fact, but must satisfy themselves by inspection or otherwise as to their accuracy. No person in this firm's employment has the authority to make or give representation or warranty in respect of the property.

SOWERBYS



Sowerbys Estate Agents Limited is a company registered in England and Wales, company no: 05668606. Registered office 54 Westgate, Hunstanton, Norfolk, PE36 5EL