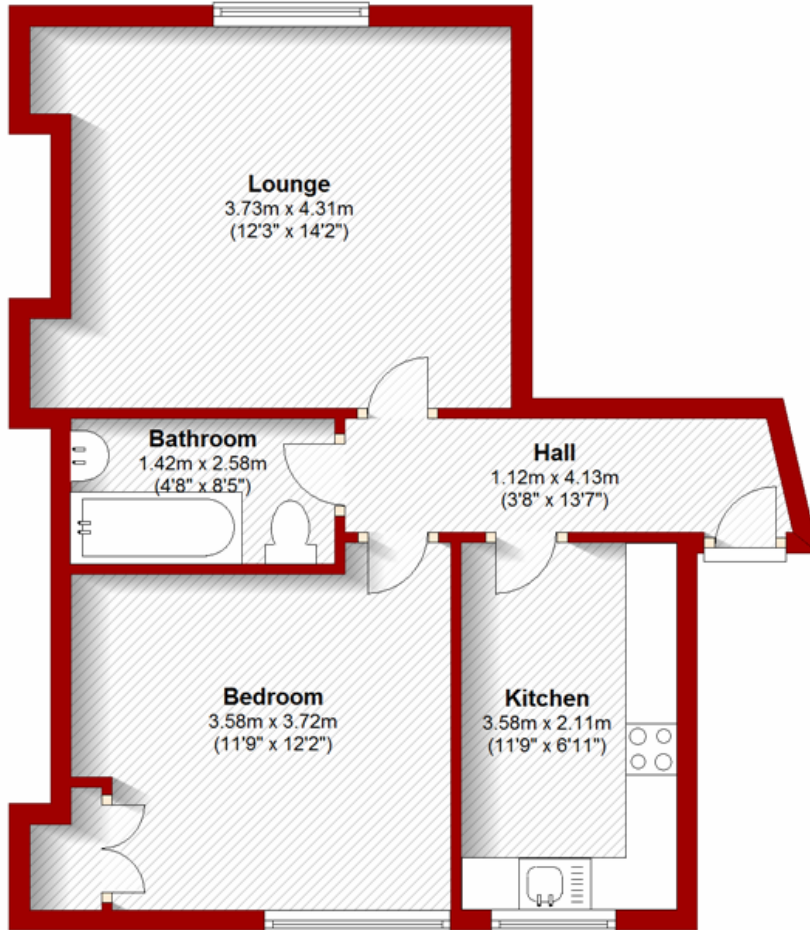


10 Jasmine Place
Top Left
Aberdeen

Ground Floor

Approx. 45.4 sq. metres (489.0 sq. feet)



Total area: approx. 45.4 sq. metres (489.0 sq. feet)

The above particulars are for guidance only, no liability for any errors or omissions will be accepted by Aberdeen Property Leasing Ltd.