



30 Knightsridge House Watson Green, Liv

Offers Over £155,000



30 Knightsridge House Watson Green

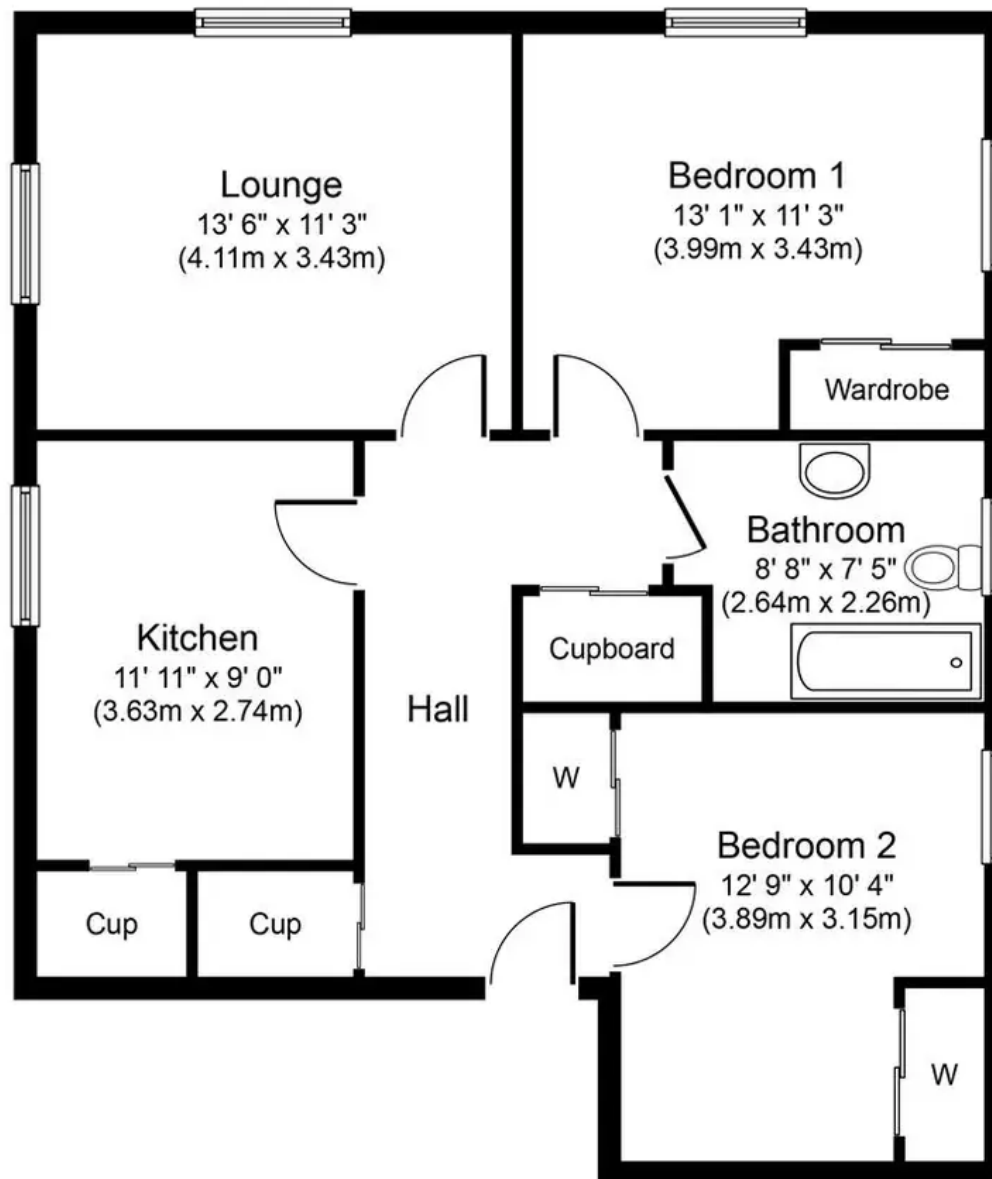
Livingston, Livingston

Luxurious top floor 2 bed apartment in exclusive development. South-facing lounge floods with light. Well-proportioned kitchen/diner, stylish bathroom. Secure entry, ample parking, manicured grounds, close to golf course. A lifestyle of luxury and tranquillity awaits.

Tenure: Freehold

- Two Double Bedroom corner-aspect Top Floor apartment with south facing orientation
- Sunny aspect spacious Lounge enjoys south-facing light
- Property benefits from secure entry-door system and Factored
- Ample Residents and Visitors Parking
- Exclusive location surrounded by well maintained grounds and close to Deer Park Golf Course





Approximate Floor Area

**777 sq. ft.
(72.2 sq. m.)**

Whilst every attempt has been made to ensure the accuracy of the floor plan contained here, measurements of doors, windows, rooms and any other items are approximate and no responsibility is taken for any error, omission, or mis-statement. This plan is for illustrative purposes only and should be used as such by any prospective purchaser or tenant. The services, systems and appliances shown have not been tested and no guarantee as to their operability or efficiency can be given.



KnightBain Estate Agents

Knightbain, 4 Greendykes Road, Broxburn - EH52 5AG

01506 852000

info@knightbain.co.uk

www.knightbain.co.uk/

