



# CROWN

LETS 4 U

**FOR SALE**



**Guide Price £420,000 to £430,000**

### **3 bedroom End of Terrace Laurel Crescent, Croydon, CR0**

Crown Lets 4u Estate Agents are proud to present a spacious 3 Bed End of Terrace House with utility room, conservatory and off-street parking.

The property benefits from two double bedrooms, one generous size sing bedroom, upstairs family bathroom, fully fitted kitchen /breakfast room, reception room with original fireplace feature, utility room and conservatory.

The property further benefits from gas central heating, double glazed windows, off street parking and a private rear garden with a small shed.

This property is close to Spring park, Kennel Wood, local schools and close to all local amenities.

- **3 Bed End of Terrace**
- **Family Bathroom**
- **Kitchen/Breakfast Room**
- **Reception Room**
- **Utility Room**
- **Conservatory**
- **Gas Central Heating**
- **Double Glazed**
- **Private Garden**
- **Off Street Parking**

**Croydon Office:** Crown Lets 4u, 292 London Road, Croydon, Surrey, CR0 2TG

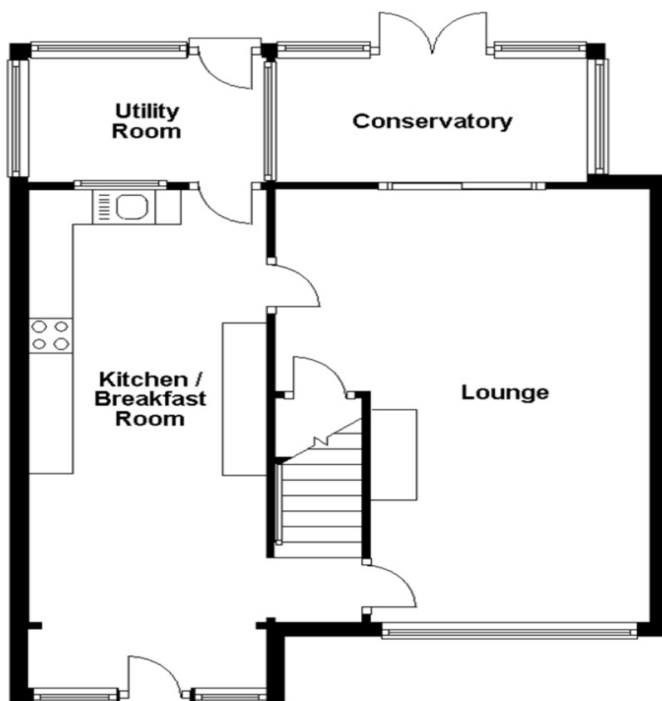
**Tel:** 020 8684 6677 **Mob:** 07540 874 532 **Fax:** 0872 115 6090 **Email:** [info@crownlets4u.co.uk](mailto:info@crownlets4u.co.uk)

[www.crownlets4u.co.uk](http://www.crownlets4u.co.uk)

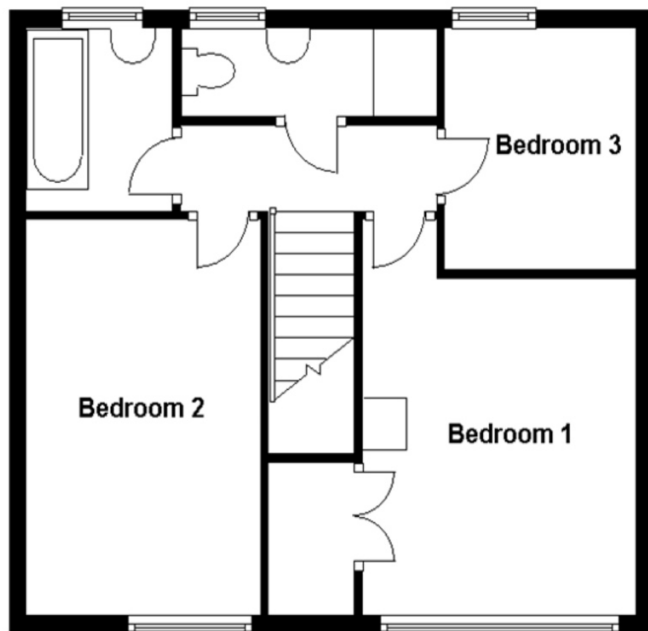


# FLOOR PLANS

**Ground Floor**  
Approx. 592.3 sq. feet



**First Floor**  
Approx. 438.6 sq. feet



**Croydon Branch:** 292 London Road, Croydon, Surrey, CR0 2TG

**Tel:** 020 8684 6677 **Mob:** 07540 874 532 **Fax:** 0872 115 6090 **Email:** [info@crowplets4u.co.uk](mailto:info@crowplets4u.co.uk)

[www.crowplets4u.co.uk](http://www.crowplets4u.co.uk)