



**3 Bedroom Town House** Offers Over **£300,000**

Stadium View, Swindon, SN25 4ES

**mcfarlane**  
property.com

## 3 Bedroom Town House North Swindon

---

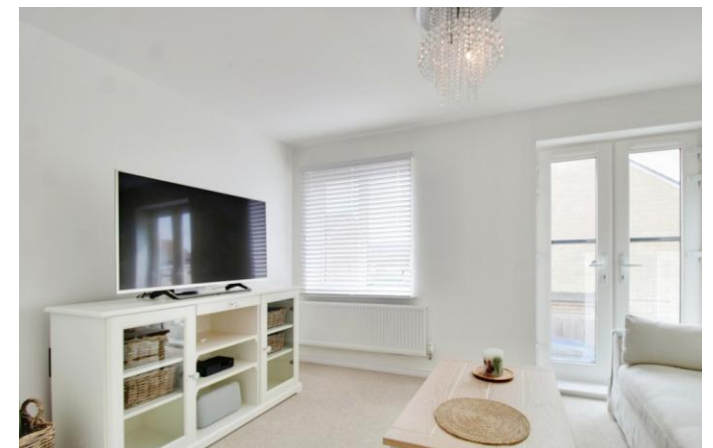
- SEMI DETACHED
  - 3 DOUBLE BEDROOMS
  - 2 RECEPTION ROOMS
  - KITCHEN DINER
  - EN-SUITE TO MASTER
  - ACCOMODATION OVER THREE FLOORS
  - OFF ROAD PARKING
  - LOW MANTINANCE GARDENS
- 





## Property description

This lovely **THREE DOUBLE BEDROOM, SEMI DETACHED** townhouse is presented in a great condition throughout. On the ground floor there is a modern fitted **KITCHEN/DINING ROOM** with French doors to the low maintenance rear garden, cloakroom and a **SNUG** to the front of the property. On the first floor there is a living room with **JULIET BALCONY** and **MASTER BEDROOM** with **EN-SUITE**. On the top floor there are **TWO FURTHER DOUBLE** bedrooms and family bathroom. Accessed via the rear garden there is **OFF ROAD PARKING**.



Council Tax Band D  
Council Tax Estimate £2,198








We   
where you  
**LIVE**

Our team are friendly, experienced and are all local. They know it better than they do their own living rooms and can help you find what you're looking for because **we love where we live.**

We would be delighted to show you around this property.

**Because every home  
needs a personal touch.**

**If you would like to view this  
property then please get in touch.**

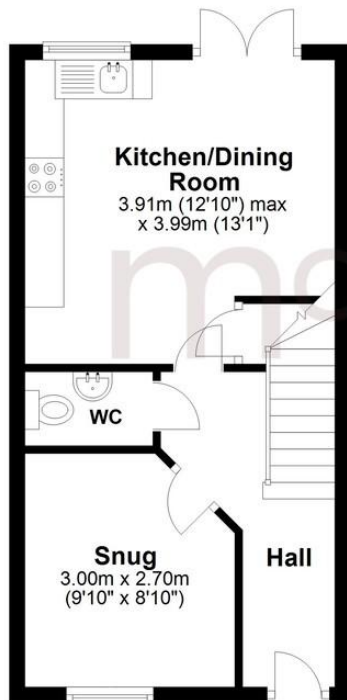
 01793 296600

 [swindon@mcfarlaneproperty.com](mailto:swindon@mcfarlaneproperty.com)

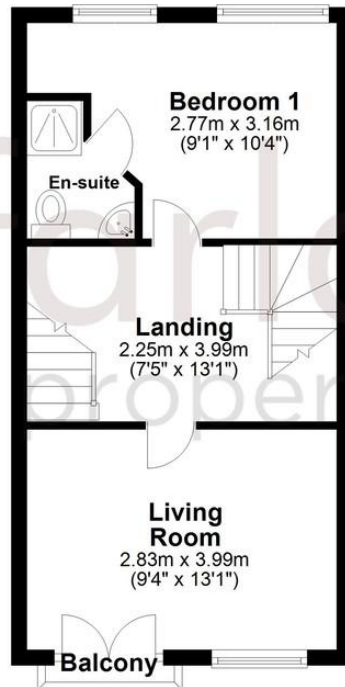
[mcfarlaneproperty.com](http://mcfarlaneproperty.com)

Agents Note: Whilst every care has been taken to prepare these sales particulars, they are for guidance purposes only. All measurements are approximate are for general guidance purposes only and whilst every care has been taken to ensure their accuracy, they should not be relied upon and potential buyers are advised to recheck the measurements

**Ground Floor**  
Approx. 32.1 sq. metres (345.7 sq. feet)



**First Floor**  
Approx. 32.1 sq. metres (345.7 sq. feet)



**Second Floor**  
Approx. 33.5 sq. metres (360.4 sq. feet)



Total area: approx. 97.7 sq. metres (1051.8 sq. feet)

**mcfarlane**  
property.com

**Cricklade.**  
102 High Street  
Cricklade SN6 6AA  
 01793 751044

**Marlborough.**  
106 High Street  
Marlborough SN8 1LT  
 01672 514380

**Old Town.**  
28-30 Wood Street  
Swindon SN1 4AB  
 01793 296880

**Swindon.**  
The Village Centre,  
Redhouse SN25 2FW  
 01793 296600