



## 11 Greenwood Drive, Hirwaun, CF44 9QZ

£199,000 Freehold

Semi-Detached Bungalow • Two Bedrooms • Double Glazing • Gas Central Heating System • Low-maintenance Garden • Garage and Off Road Parking



Tel: 01685 886086 Email: [sallyhillier@bidmeadcook.co.uk](mailto:sallyhillier@bidmeadcook.co.uk)  
[www.bidmeadcook.co.uk](http://www.bidmeadcook.co.uk)

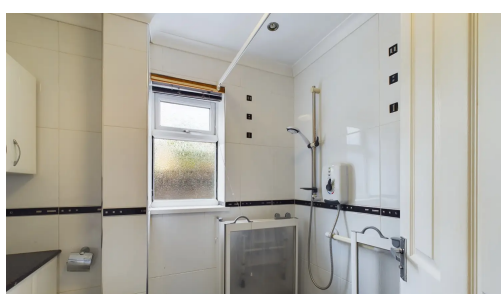
A two bedroom, semi-detached bungalow in the sought after area of Hirwaun having local schools, shops and convenient access to the A465. The accommodation comprises an entrance hall, kitchen having a range of wall and base units and door to the rear garden. Reception room, two double bedrooms (one having access to the rear garden) and shower room. Further benefits include double glazing and a gas central heating system. Outside, the property benefits both front and rear gardens, being low-maintenance as laid mostly to gravel and paving, enclosed by walled boundaries. There is an en-bloc garage to the rear of the property and a parking space in front of the garage.

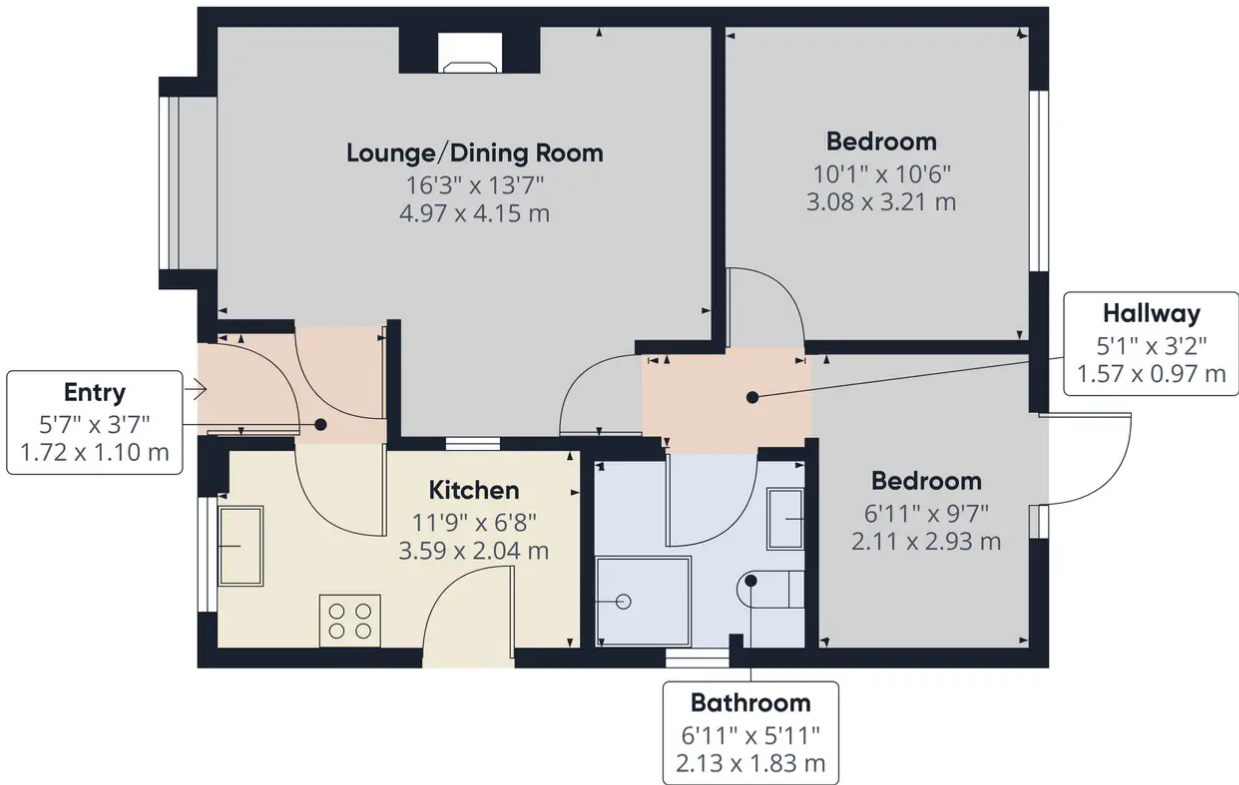


Council Tax band: C

Tenure: Freehold

EPC Energy Efficiency Rating: C





Approximate total area<sup>(1)</sup>  
527.67 ft<sup>2</sup>  
49.02 m<sup>2</sup>

(1) Excluding balconies and terraces

While every attempt has been made to ensure accuracy, all measurements are approximate, not to scale. This floor plan is for illustrative purposes only.

GIRAFFE360



No statement in these details is to be relied upon as representation of fact, and purchasers should satisfy themselves by inspection or otherwise as to the accuracy of the statements contain within. These details do not constitute any part of any offer or contract. Bidmead Cook and their employees and agents do not have any authority to give warranty or representation whatsoever in respect of this property. These details and all statements herein are provided without any responsibility on the part of Bidmead Cook or the vendors. Equipment: Bidmead Cook has not tested the equipment or central heating system mentioned in these particulars and the purchaser are advised to satisfy themselves as to the working order and condition. Measurements: Great care is taken when measuring, but measurements should not be relied upon for ordering carpets, equipment etc. The Laws of copyright protect this material. Bidmead Cook is the owner of the copyright. This property sheet forms part of our database and is protected by the database right and copyright laws. No unauthorised copying or distribution without permission.

Bidmead Cook is a trading name of trading name of BC Acquisition Ltd. Registered in England No.14967217