



Owen
Isherwood
CHARTERED SURVEYORS

Bramley House, The Guildway, Old Portsmouth Road, Guildford Surrey, GU3 1LR

TO LET | 3,068 SQ FT

Grade A Office - Fully furnished (CAT A plus) options available

- Headquarters style office building
- Furnished and Un-furnished options
- Common parts recently refurbished
- Adjacent to the Artington Park & Ride service
- Bus stops in both directions at entrance to the park
- Excellent parking allocation



Location

Bramley House is located on The Guildway Business Park, situated approximately 1.5 miles South of Guildford town centre, adjacent to the Artington Park & Ride Facility on the A3100 Guildford to Godalming road. Along with easy access to town via the Park & Ride This location offers good links to the A3 (2.5 miles) and national motorway network at Junction 10 of the M25.

Description

Bramley House is a Grade A office building which sits in a landscaped setting. The building provides high quality office space with extremely easy access to Guildford town center. The ground floor office is being vacated due to the current tenant taking a larger office elsewhere in the building. New refurbished and fitted options available or option to take on the existing fitout.

There is a very healthy parking allocation of at least 1:200 sq. ft.

Accommodation

Name	sq ft	sq m	Availability
Ground - Office	3,068	285.03	Available
Total	3,068	285.03	

Rent

£75,000 per annum

Rates & Charges

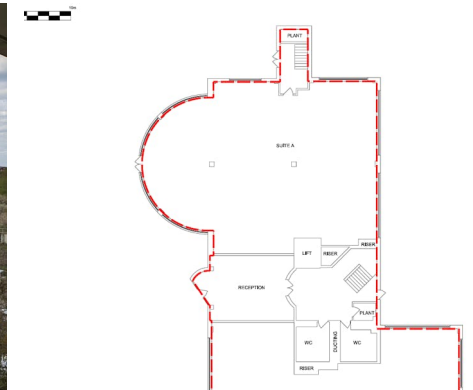
Service charge: £12 per sq ft
Estates charge: N/A
Rates payable: £37,401 per annum

EPC

C (66)

Legal costs

Each party to bear their own legal costs incurred in the transaction.



Contact

Adam Fenney

T: 01483 300176

M: 07983204530

E: adam@owenisherwood.com

owenisherwood.com | 01483 300 176

1 Wey Court, Mary Road, Guildford, Surrey GU1 4QU

These particulars do not constitute, or form any part of, any offer or contract, and whilst all the information given is believed to be correct, all interested parties must satisfy themselves of its accuracy. All prices and rents are quoted exclusive of VAT, unless otherwise stated