



A WELL PRESENTED THREE BEDROOM SEMI DETACHED FAMILY HOME WITH SCOPE TO EXTEND (STPP)

Tudor Way, Rickmansworth, Hertfordshire, WD3 3HN

ROBSONS

Tudor Way, Rickmansworth, Hertfordshire, WD3
3HN

**RECEPTION ROOM • DINING ROOM •
KITCHEN • THREE BEDROOMS • FAMILY
BATHROOM • ATTRACTIVE REAR GARDEN •
OFF-STREET PARKING • SCOPE TO EXTEND
(STPP)**

Description

A great opportunity to acquire a well presented, three-bedroom semi-detached property in one of the area's most sought after locations with scope to extend (STPP).

This lovely family home enjoys a convenient location within easy reach of local amenities, transport links and excellent schools.

The ground floor comprises an entrance porch and hallway with stairs to the first floor and under stair storage. There is a front aspect reception room with a door leading to a separate dining room with patio doors opening out to the garden. The kitchen features a range of modern units, space for freestanding appliances, a storage cupboard and a side door leading out to the garden.





To the first floor there are three good-sized bedrooms, one benefitting from two storage cupboards, a fully tiled family bathroom with under sink storage and a separate WC.

Externally, this lovely home offers a well maintained rear garden, laid to lawn with shrub and flowerbed borders, a patio area to enjoy outside dining and a garden shed. To the front there is a large driveway allowing off-street parking for multiple cars a small garden with shrub and flowerbed borders and side access to the rear garden.

Location

Rickmansworth town centre has a wide range of boutique shops, coffee houses, restaurants and major supermarkets. The Metropolitan and Chiltern line train services connect you to London Baker Street, Marylebone Station and beyond. The M25 motorway is available at both junction 17 and 18, connecting you to the national motorway network. Major London airports are also within reach. The area is well served for good quality private and state schools for all ages. Chorleywood and Rickmansworth offer everything for the sporting individual from rugby, cricket, football, tennis, horse riding and golf. Rickmansworth Aquadrome is an ideal setting for walks, sailing, fishing and water skiing.

Additional Information

Tenure: Freehold

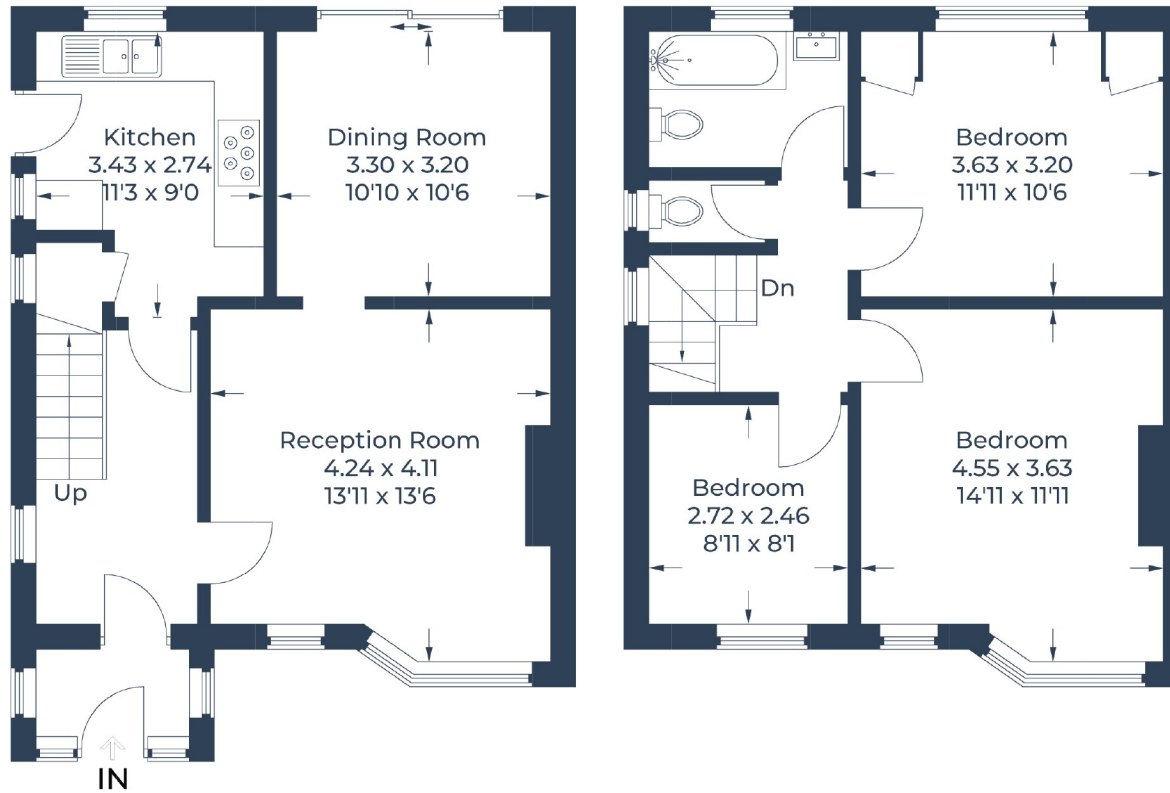
Local Authority: Three Rivers District Council

Council Tax: D

Energy Efficiency Rating: D



Approximate Gross Internal Area
Ground Floor = 48.3 sq m / 520 sq ft
First Floor = 45.2 sq m / 486 sq ft
Total = 93.5 sq m / 1,006 sq ft



Ground Floor

First Floor

Illustration for identification purposes only,
measurements are approximate, not to scale.
© CJ Property Marketing Produced for Robsons

ROBSONS

130 High Street, Rickmansworth WD3 1AB
Tel: 01923 777762 Email: rickmansworth@robsonswb.com

www.robsonswb.com

www.the-londonoffice.co.uk
40 ST JAMES'S PLACE SW1